

Project Location **South Ridge Park 1450 Freeman Road, Hoffman Estates, IL 60169** 09/01/2020
 id. 17446049
 by **Dustin Hugen in Member District ADA Project Request**
 dhugen@heparks.org

Original submission 09/01/2020

Name **Dustin Hugen**

Job Title **Director of Parks, Planning & Maintenance**

E-mail Address **dhugen@heparks.org**

Phone Number **847-285-5465**

Park District **Hoffman Estates**

Project Status **New
Alteration**

Project Type **Plumbing Elements and Facilities
Recreation Facilities and Amenities
Routes and Surfaces**

Plumbing Elements and Facilities- select a Project Category below: **Lavatories and Sinks
Toilets- Stalls-Urinals**

Recreation Facilities and Amenities- select a Project Category below: **Benches- Picnic Tables
Fishing Piers- Platforms**

Routes and Surfaces- select a Project Category below: **Accessible Routes- Means of Egress
Curb Ramps
Parking Spots
Play Surfaces
Sidewalks**

Benefits of the Project **The project at South Ridge Park is enhancing the entire north side of Hoffman Estates. The new walking path around the lake will meet ADA requirements, the new playgrounds have a complete turf fall surface. All new sidewalks around splash pads, playgrounds and sand volleyball. South Ridge will be an accessible destination in north Hoffman Estates.**

Items that will become ADA Compliant

New path around South Ridge Lake will be completely ADA compliant and eight feet wide. All new sidewalks leading from parking lot to new splash pad, fitness course and playground are ADA compliant. New parking lot has three handicap spaces with curb cutout ramps. New bath house has two unisex ADA compliant bathrooms. New fishing pier and kayak launch will be equipped with railings, curbs and proper ramps. Fall surface under the playground will be synthetic turf.

The project is designed or constructed, or applies human resources, to comply with:

**The 2013 Final Guideline for Outdoor Developed Areas Owned and Operated by the Federal Government
ASTM F 1951 Standard for Accessible Playground Surfaces**

Upload Project Related Files, Photos, Videos or Audio

[SOUTH_RIDGE_Fall_Surface_Specifications.pdf](#)

[Benches_ADA.pdf](#)

[Concrete.pdf](#)

[Paths.pdf](#)

[Fishing_Dock.pdf](#)

[New_Bath_Building.pdf](#)

[SOUTH_RIDGE_Overall_Plan.pdf](#)

Budget Table for ADA Related Expenses

[98b411a1-4e25-4606-8d60-f394ae7c86fe.xlsx](#)

ADA Dollars Requested

292438

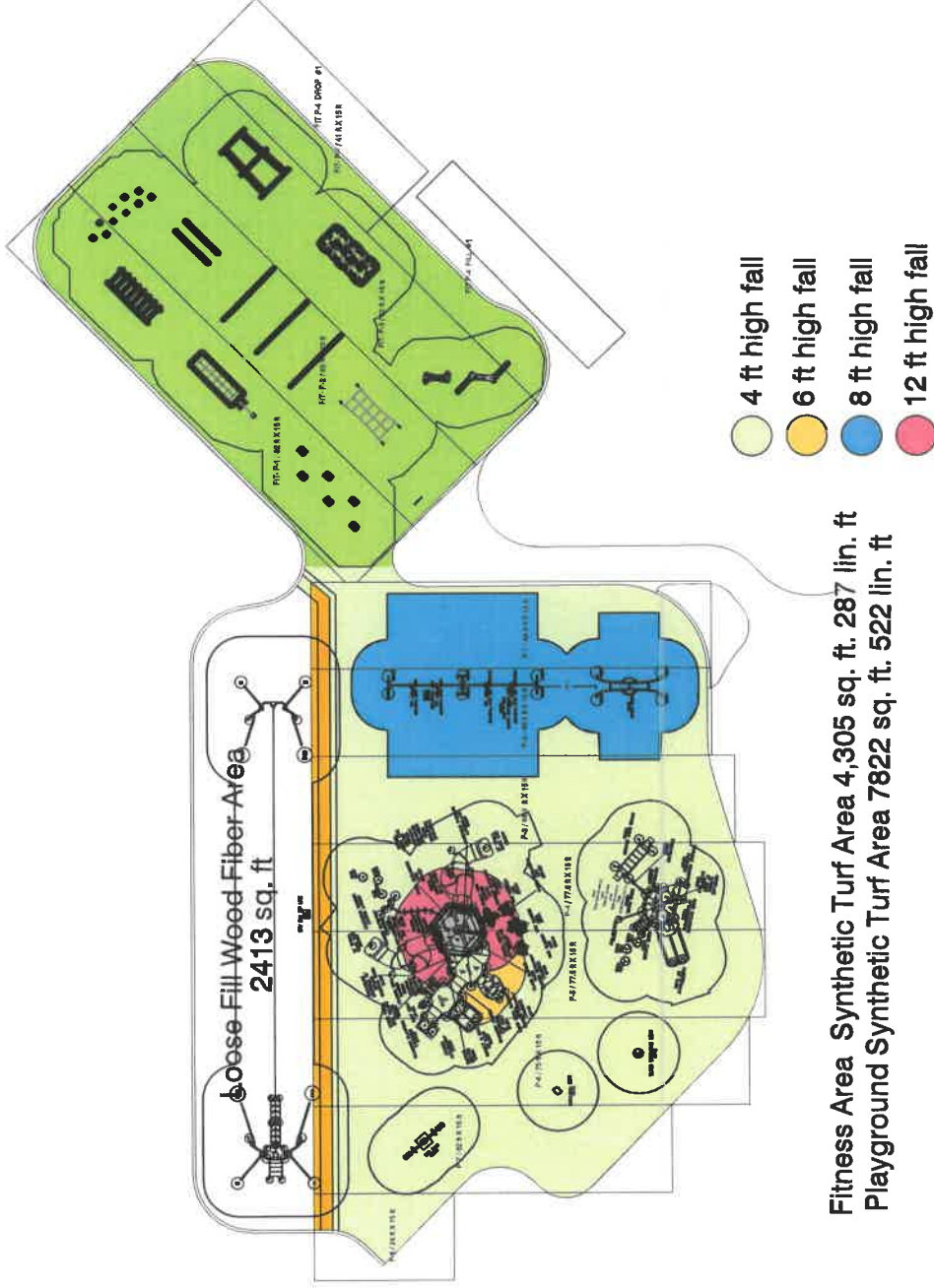
Notes related to requested amount

This is the last phase of the south ridge project. The new walking paths, sidewalks, curb cuts, new bath house, fishing pier, benches and playground fall surface that are all ADA compliant. The overall budget for this project is \$1,600,000.



OVERALL PLAN

SOUTH RIDGE PARK RE-DEVELOPMENT PLAN
SHEET 1 of 6

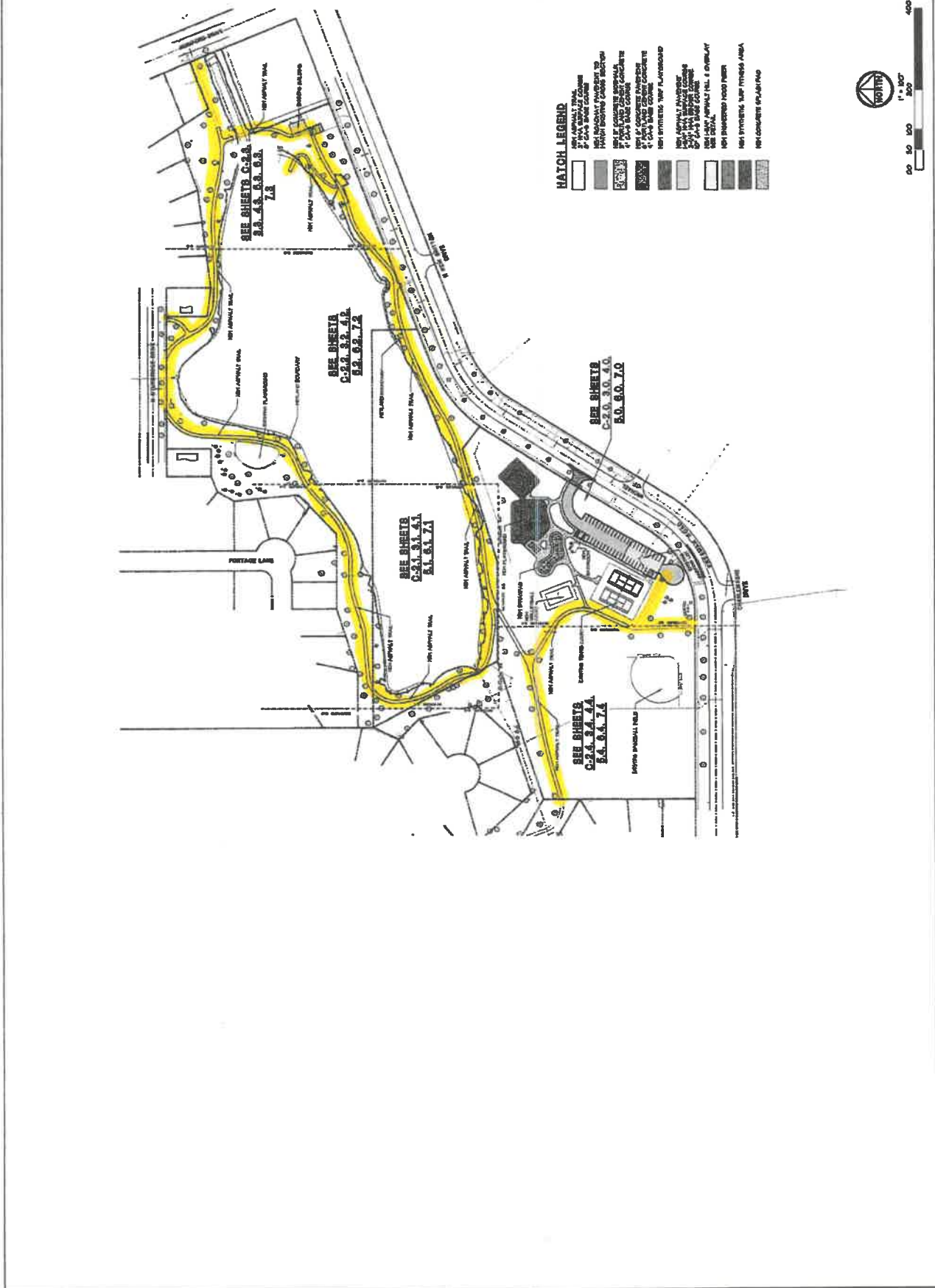


Hoffman Estates Park District

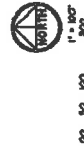
SOUTH RIDGE PARK PLAYGROUND FALL SURFACE DRAWING

SCALE = 1" = 20 ft

Path



- MATCH LEGEND**
- SEE SHEETS C-1.A, 1.A.A, 1.A.B, 1.A.C, 1.A.D, 1.A.E, 1.A.F, 1.A.G, 1.A.H, 1.A.I, 1.A.J, 1.A.K, 1.A.L, 1.A.M, 1.A.N, 1.A.O, 1.A.P, 1.A.Q, 1.A.R, 1.A.S, 1.A.T, 1.A.U, 1.A.V, 1.A.W, 1.A.X, 1.A.Y, 1.A.Z
 - SEE SHEETS C-2.A, 2.A.A, 2.A.B, 2.A.C, 2.A.D, 2.A.E, 2.A.F, 2.A.G, 2.A.H, 2.A.I, 2.A.J, 2.A.K, 2.A.L, 2.A.M, 2.A.N, 2.A.O, 2.A.P, 2.A.Q, 2.A.R, 2.A.S, 2.A.T, 2.A.U, 2.A.V, 2.A.W, 2.A.X, 2.A.Y, 2.A.Z
 - SEE SHEETS C-3.A, 3.A.A, 3.A.B, 3.A.C, 3.A.D, 3.A.E, 3.A.F, 3.A.G, 3.A.H, 3.A.I, 3.A.J, 3.A.K, 3.A.L, 3.A.M, 3.A.N, 3.A.O, 3.A.P, 3.A.Q, 3.A.R, 3.A.S, 3.A.T, 3.A.U, 3.A.V, 3.A.W, 3.A.X, 3.A.Y, 3.A.Z
 - SEE SHEETS C-4.A, 4.A.A, 4.A.B, 4.A.C, 4.A.D, 4.A.E, 4.A.F, 4.A.G, 4.A.H, 4.A.I, 4.A.J, 4.A.K, 4.A.L, 4.A.M, 4.A.N, 4.A.O, 4.A.P, 4.A.Q, 4.A.R, 4.A.S, 4.A.T, 4.A.U, 4.A.V, 4.A.W, 4.A.X, 4.A.Y, 4.A.Z

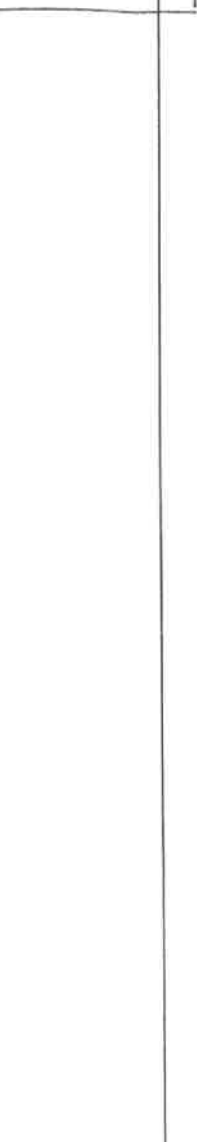
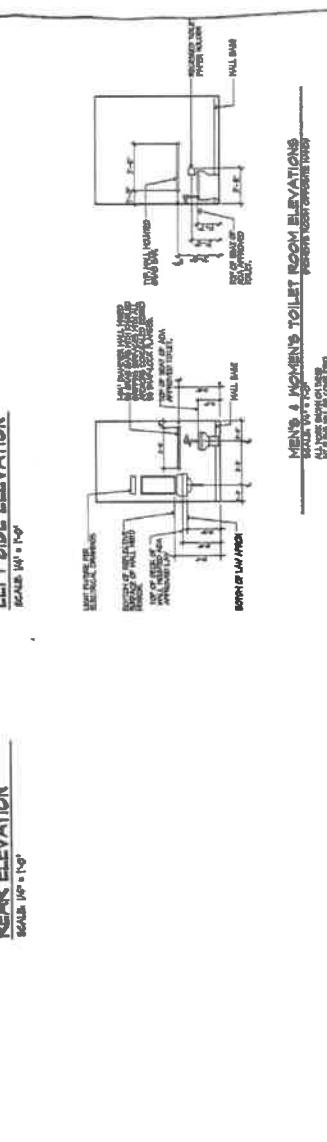
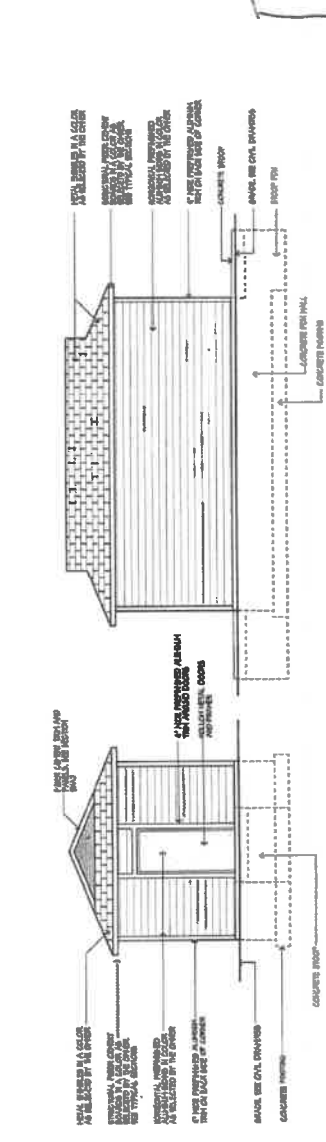
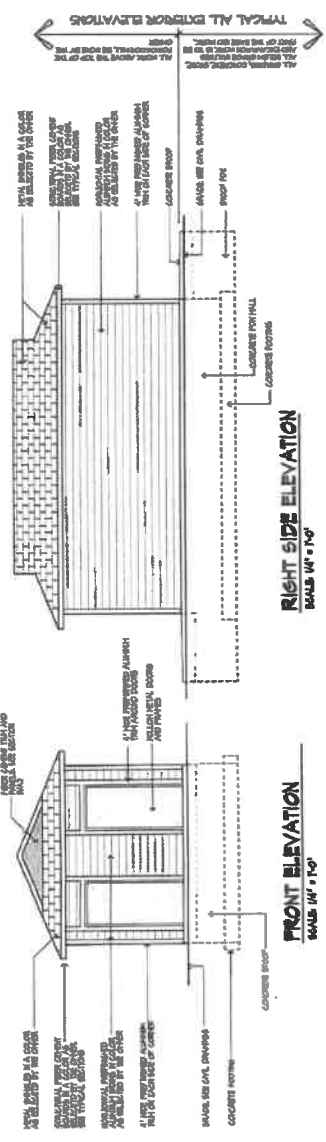
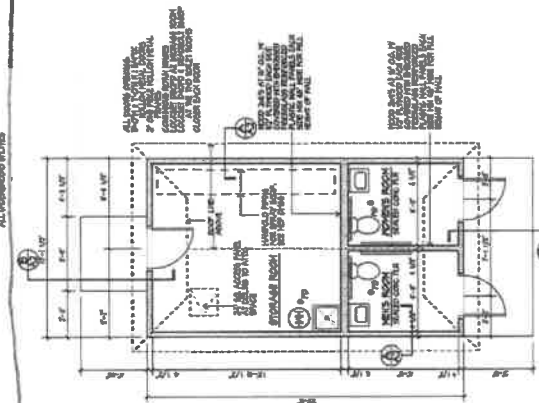
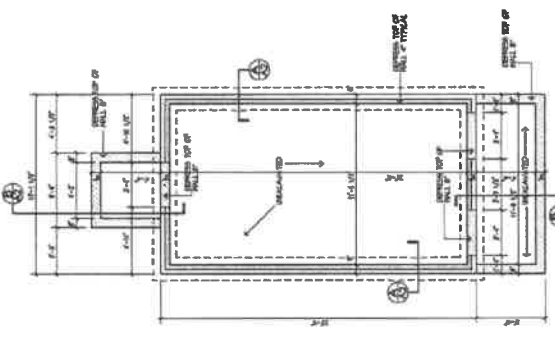


New Bath Building

planners architects
CODY/BRAUN & ASSOCIATES, LLC
 1000 BIRCHWOOD ROAD • BOSTON, MA 02110
 TEL: 617.762.8000 • FAX: 617.762.8001

P&S, EVANSON & DETMERS
 NEW TOURS FACILITY FOR
 HOFFMAN ESTATES PARK DIST.
 SOUTH RIDGE PARK-HOFFMAN ESTATES, L.

DATE: 02/26/2010
 CAD FILE: 20100226.PLT
 FOR THE: HOFFMAN ESTATES
 SHEET NO.: A-01
 OF: 2



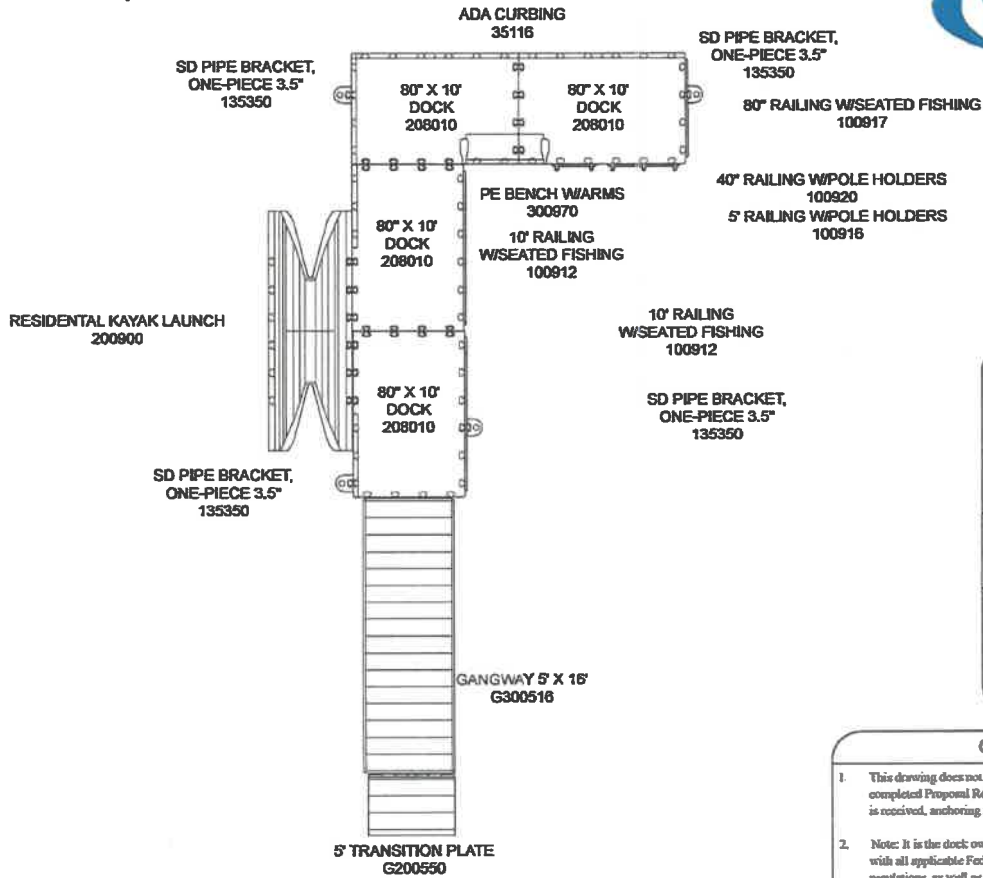
TYPICAL ALL EXTERIOR ELEVATIONS

HOFFMAN ESTATES PARK DIST.
 SOUTH RIDGE PARK-HOFFMAN ESTATES, L.

Fishing Dock

Dock Live Load of 62.5 lbs/sqft
 Low Profile Dock Live Load 30 lbs/sqft

MADE IN
 USA



Project Name:
 South Ridge Park
 Hoffman Estates, IL
Distributor Name:
 Mike Cederlund
 Team REIL, Inc.
 (815) 923-2099

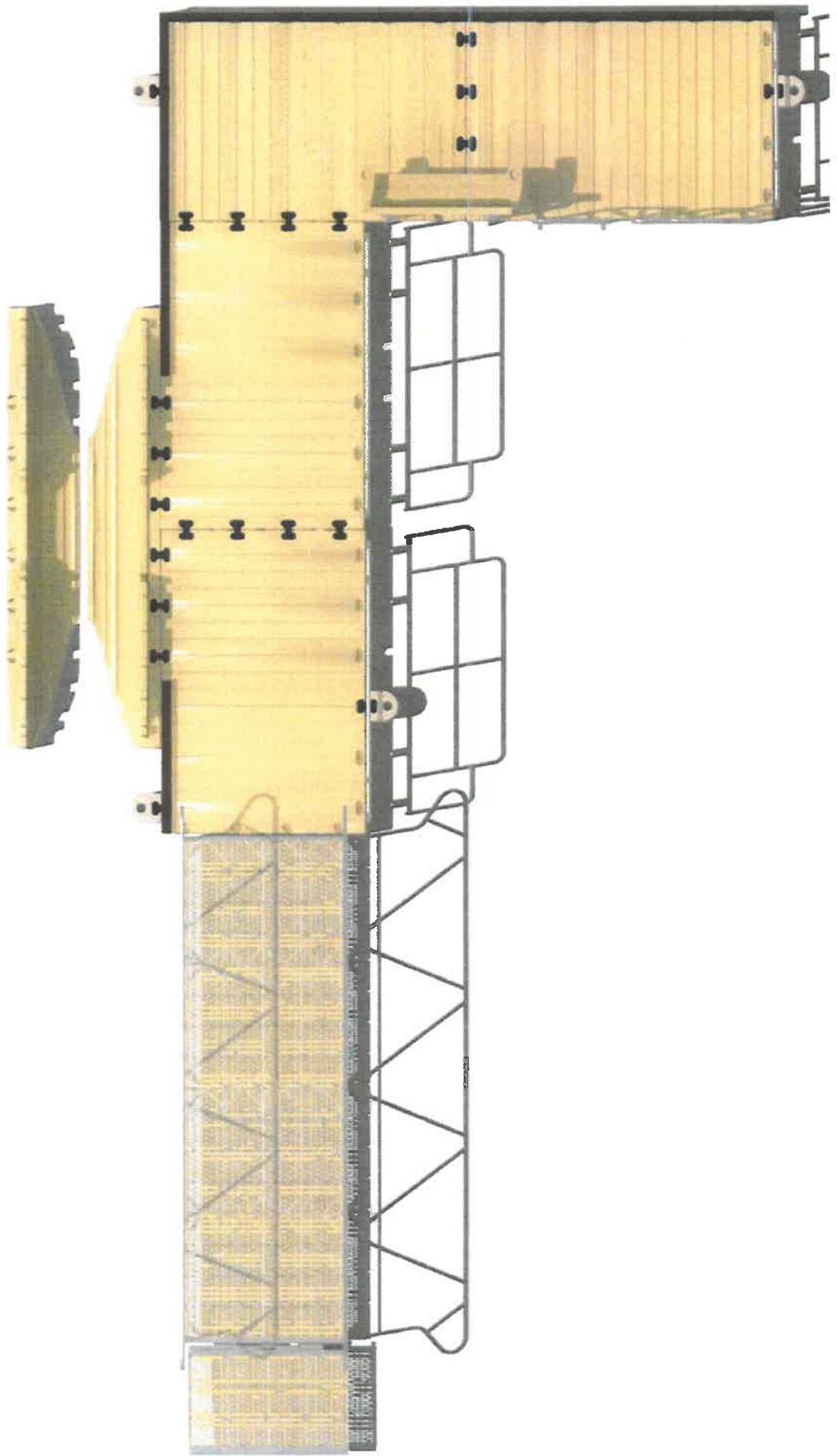
Drawn by: Mike Cederlund
Date: 8/10/2020
DWG Name: PARK_44053687469

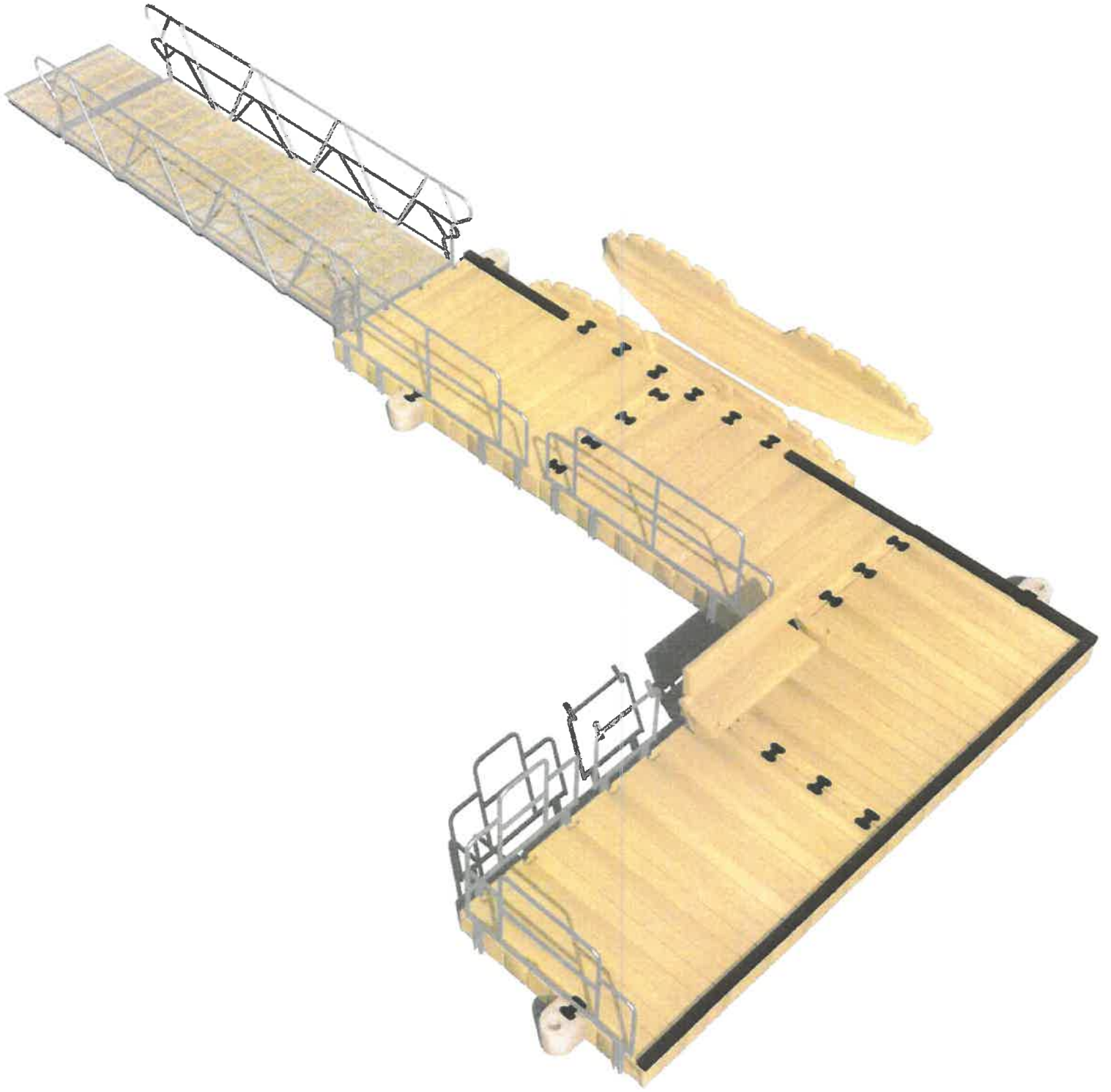
EZ Dock, Inc
 878 East Highway 60
 Monett, Missouri 65708
 Phone: 1 (800) 654-8168
 Fax: (417) 235-2232

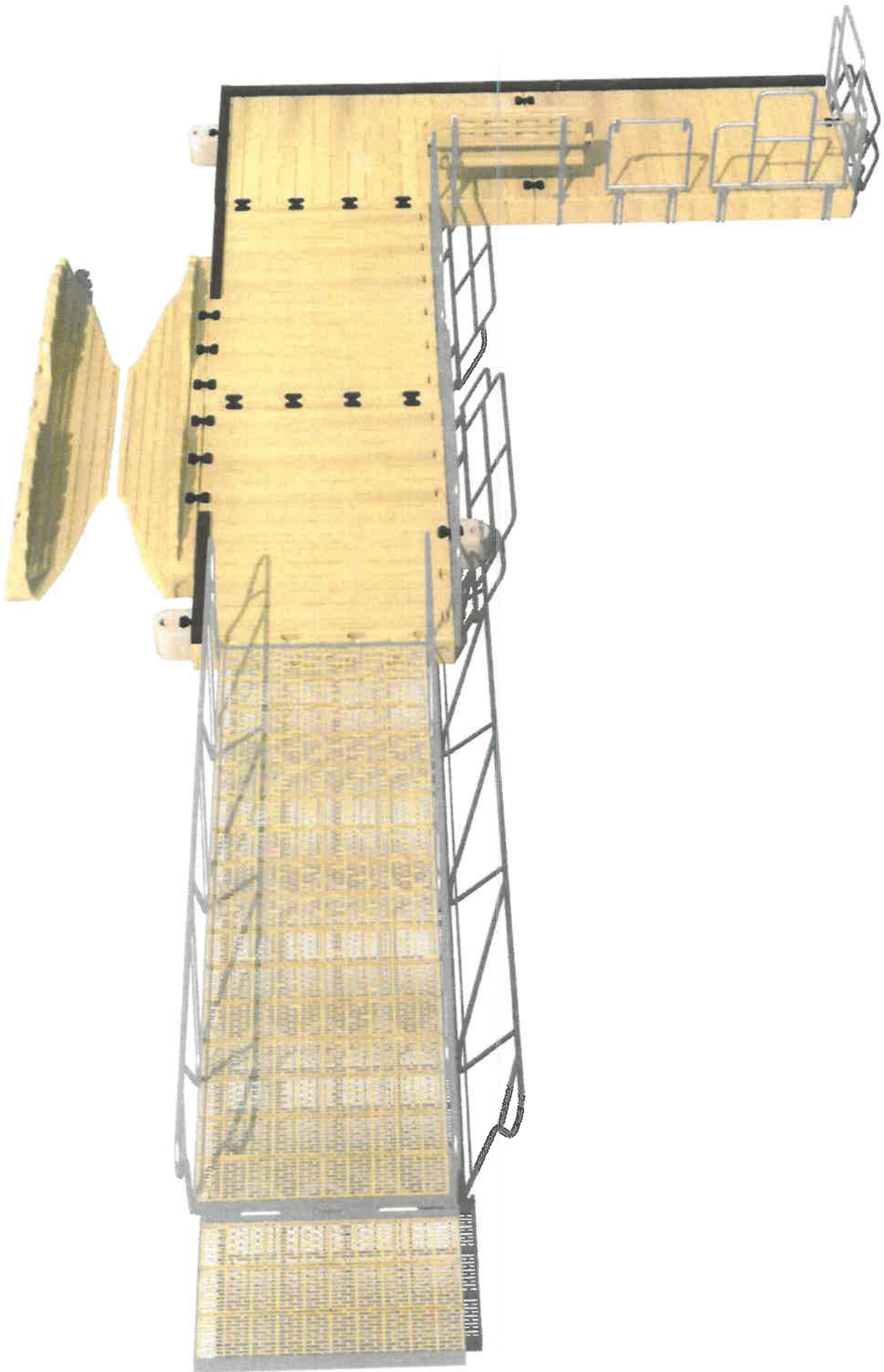
- General Notes:**
- This drawing does not reflect anchoring. Once sufficient information & completed Proposal Request Form concerning water and bottom conditions is received, anchoring may be detailed.
 - Note: It is the dock owner/operator's responsibility to ascertain and comply with all applicable Federal, State, and local laws, ordinances and regulations, as well as all inspection, permitting and licensing requirements pertaining to the installation, application and use of EZ Dock products on the owner/operator's premises. EZ Dock, Inc. assumes no duty or responsibility with respect to the legality or compliance of the owner/operator's chosen installation, application or use of EZ Dock products.
 - Reference: EZ Dock Owner Manual for additional details.

NOTICE! Read EZ Dock Limited Warranty carefully. Among other things, EZ Dock does not warrant damages, failures or defects caused by unauthorized modification of EZ Dock Product, and/or unauthorized attachment to/of EZ Dock Product.

1
10







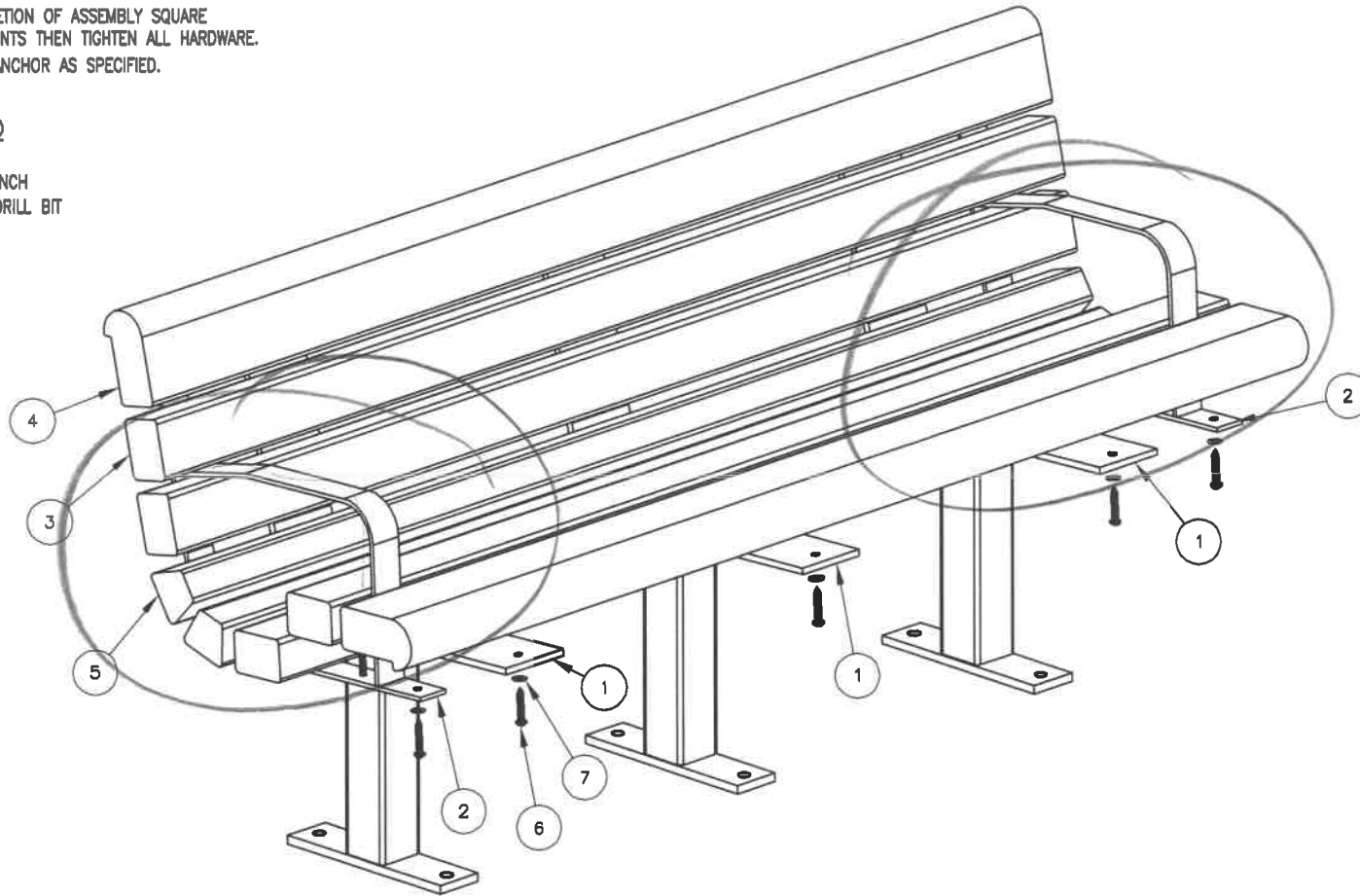
NOTES:

- 1.) DURING ASSEMBLY PROCEDURE, DO NOT COMPLETELY TIGHTEN HARDWARE.
- 2.) THE ACTUAL PARTS WILL NOT BE NUMBERED. NUMBERS ONLY APPLY TO DRAWING.
- 3.) UPON COMPLETION OF ASSEMBLY SQUARE ALL COMPONENTS THEN TIGHTEN ALL HARDWARE.
- 4.) MOUNT AND ANCHOR AS SPECIFIED.

① ATTACH SLATS TO SUPPORTS, ATTACH ARMRESTS.

TOOLS REQ'D

- 3/4" WRENCH
- 1/4" ALLEN WRENCH
- 1/2" MASONRY DRILL BIT
- DRILL



PARTS LIST FOR S-2

ITEM	QTY	PART NO	DESCRIPTION
1	3	0-88-00-01/S-2	BENCH SUPPORT FOR SURFACE MOUNT
2	2	0-88-00-05	CONTOUR STRAP W/ ARMREST
3	4	0-88-60PL-22	3" X 4" X 71" INT'R SLAT, 2 ARMS, PLASTIC
4	2	0-88-60PL-23	71" EDGE SLAT, 2 ARMS, PLASTIC
5	2	0-88-60PL-24	71" TRAP SLAT, 2 ARMS, PLASTIC
6	40	1-13-016	3/8" X 2" SS BTN SKT HD LAG SCR
7	40	1-22-024	3/8" SS FLAT WASHER

KITS PROVIDED FOR S-2

ITEM	QTY	PART NO	DESCRIPTION
8	2	K-ANC0860-3	1/2" X 3 3/4" SS ANCHOR KIT (3PCS)
9	1	K-BL0632-40	3/8" LAG HARDWARE KIT (40PC)



ASSEMBLY INSTRUCTIONS

DATE DRAWN : 09/05/08
 DRAWN BY : ESS
 DATE REV. : 00/00/00
 REV. BY : XXX

REV. A

DRAWING NUMBER

88 SERIES PL-2AR

SHEET 2 OF 2