

Title	Volz Park: 915 W. St. James St.	12/12/2022
	by Tyler Quattrocchi in Member District ADA Project Request	id. 34382576
	410 N Arlington Heights rd Arlington Heights, Illinois 60004 IL United States 6306325992 tquattrocchi@AHPD.org	

Original Submission 12/12/2022

Name	Tyler Quattrocchi
Job Title	Park Planner
E-mail Address	tquattrocchi@gmail.com
Phone Number	6306325992
Park District	Arlington Heights
Project Location	Volz Park: 915 W. St. James St.
Project Status	Alteration
Project Type	Routes and Surfaces
Routes and Surfaces- select a Project Category below:	Walking Surfaces Sidewalks Athletic Surfaces Accessible Routes- Means of Egress
Benefits of the Project	replacement of playable surfaces, better access for accessibility needs, Updated accessible Drinking Fountain, Accessible benches
Items that will become ADA Compliant	Pickle ball Courts, drinking fountain, benches, picnic table, walkway
The project is designed or constructed, or applies human resources, to comply with:	Agency's ADA Transition Plan

Upload Project Related Files, Photos, Videos or Audio

[Volz_1.PNG](#)

[Volz_2.PNG](#)

[Volz_3.pdf](#)

Budget Table for ADA Related Expenses

[Budget Table.xlsx](#)

ADA Dollars Requested	15750.0
-----------------------	----------------

Notes related to requested amount	n/a
-----------------------------------	-----

West St. James Street

Placed Chiseled Cross in Concrete
N1974331.60
E1076226.44
Elev.=715.85



Scale: 1"=10'

LEGEND

EXISTING	PROPOSED
	Manhole
	Catch Basin
	Storm Sewer
	Water Main
	Overhead Wires
	Fire Hydrant
	Valve Vault
	Light Pole
	Utility Pole
	Sign
	Fence
	Curb & Gutter
	Depressed Curb
	Curb Elevation
	Gutter Elevation
	Pavement Elevation
	Sidewalk Elevation
	Ground Elevation
	Contour Line
	Deciduous Tree
	Coniferous Tree
	Tree Protection Fencing at Drip Line

PAVING & SURFACE LEGEND

- Tennis Court Pavement Section (NO RECYCLED MATERIAL ALLOWED)**
Surface Cooling
(Elite Sport Coating System Or Approved Equal)
Inner Court Color: Dark Blue (Or Approved Equal)
Outer Court Color: Light Green (Or Approved Equal)
- 1 1/2" Hot Mix Asphalt, IL-9.5, N50, PG58-28
(Virgin Mix, NO RAP, RAS, FRAP)
Tack Coat (0.25 gal/sq yd)
Tensor GlasPave GP25 Waterproofing Paving Mat
(Or Approved Equal)
- 2 1/2" Hot Mix Asphalt, IL-19.0, N50, PG58-28
(Virgin Mix, NO RAP, RAS, FRAP)
Prime Coat (0.25 gal/sq yd)
6" Aggregate Base Course, Type B, Crushed
(Minimum)
Tensor Geogrid TX160
(Installed Per Manufacturers Specifications)
- Concrete Sidewalk Section**
5" Portland Cement Concrete
6"x6" W1.4xW1.4 Welded Wire Fabric
2" Aggregate Base Course, Type B, Crushed
- Light-Duty Asphalt Pavement Section**
1 1/2" Hot Mix Asphalt, Mix D, IL-9.5, N50
2" Hot Mix Asphalt, IL-19.0, N50
Prime Coat (0.25 gal/sq yd)
6" Aggregate Base Course, Type B, Crushed

TENNIS/PICKLEBALL COURT PAVING NOTES

- No Recycled Content Shall Be Allowed in Hot Mix Asphalt Mixes for Tennis Court Paving.
- Paving Shall Extend 12" Beyond Fence Posts.
- Cold Joints Shall Not Be Allowed in Tennis Court Areas. Contractor Shall Make Accommodations for Weather, Staffing, Number of Crews, and Any Other Measures as Needed.
- Slope - Tennis Court Slope Shall Be Sloped No Greater Than 1.00%.
- Planarity - Finished Court Elevation Shall Not Vary By More Than 3/8" From Designed Elevation Within the Primary Playing Area.
- Evenness - Surface Shall Not Vary more Than 1/4" in 10' When Measured in Any Direction Using a Straightedge.
- Small Irregularities - No Deviation in the Asphalt Surface Shall be Greater Than 1/8" in 18".
- Tennis Court Areas Shall be Prepared Utilizing Laser-Grading.



ERIKSSON ENGINEERING ASSOCIATES, LTD.

145 COMMERCE DRIVE, SUITE A
GRAYSLAKE, ILLINOIS 60030
PHONE: (847) 223-4804
FAX: (847) 223-4864
EMAIL: INFO@EEA-LTD.COM
PROFESSIONAL DESIGN FIRM
LICENSE NO. 184-003220
EXPIRES: 04/30/2022

**ARLINGTON HEIGHTS PARK DISTRICT
RECREATION COURT IMPROVEMENTS
VARIOUS LOCATIONS
ARLINGTON HEIGHTS, ILLINOIS**

Reserved for Seal:

NOT FOR CONSTRUCTION

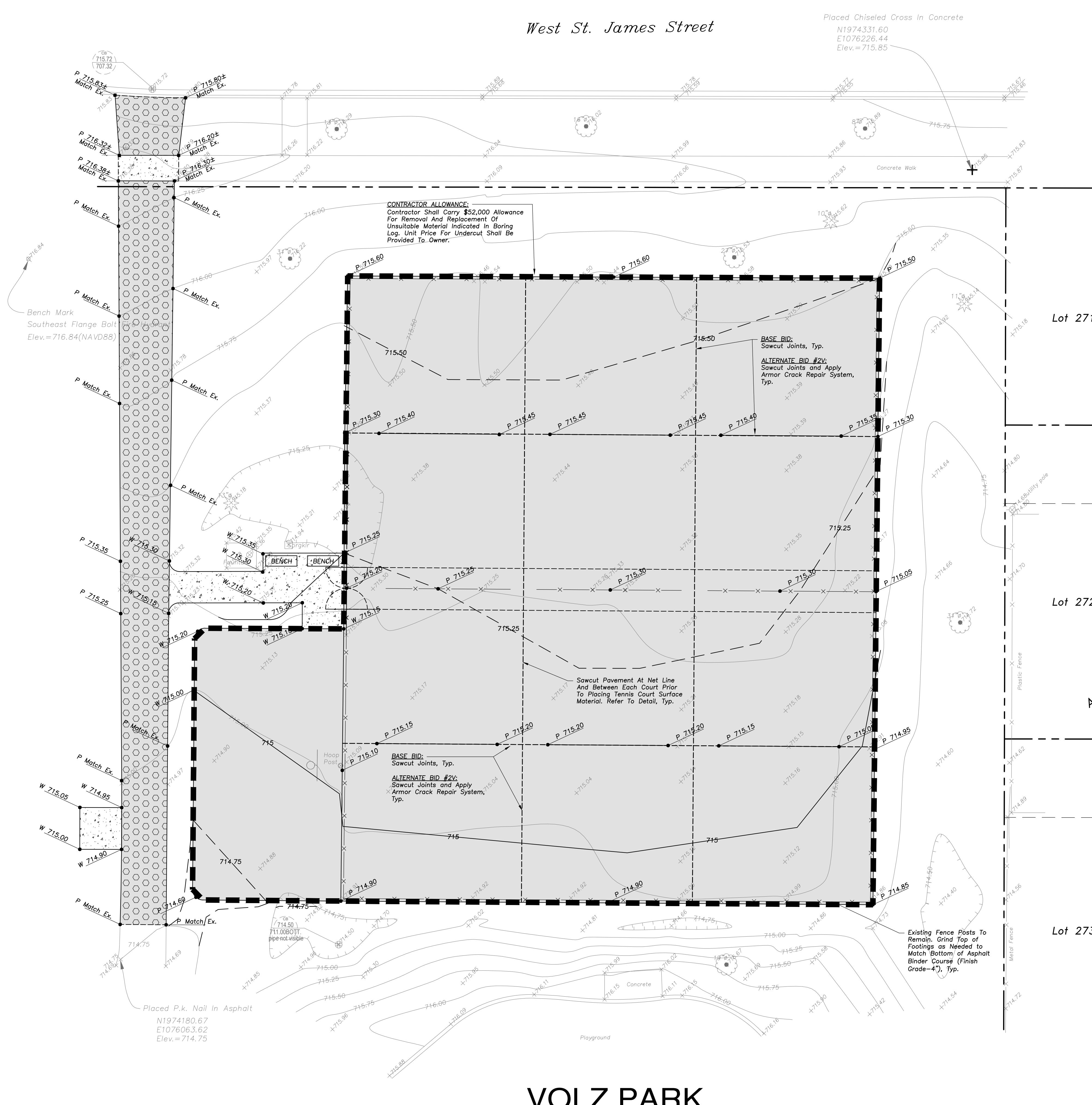
No.	Date	Description
	06/22/21	Issued For Bid

© ERIKSSON ENGINEERING ASSOCIATES, LTD. 2021
THIS PLAN & DESIGN ARE THE PROPERTY OF ERIKSSON ENGINEERING ASSOCIATES, LTD.
NO REPRODUCTION OR USE OF THESE PLANS IS PERMITTED WITHOUT THE WRITTEN
CONSENT OF ERIKSSON ENGINEERING ASSOCIATES, LTD.

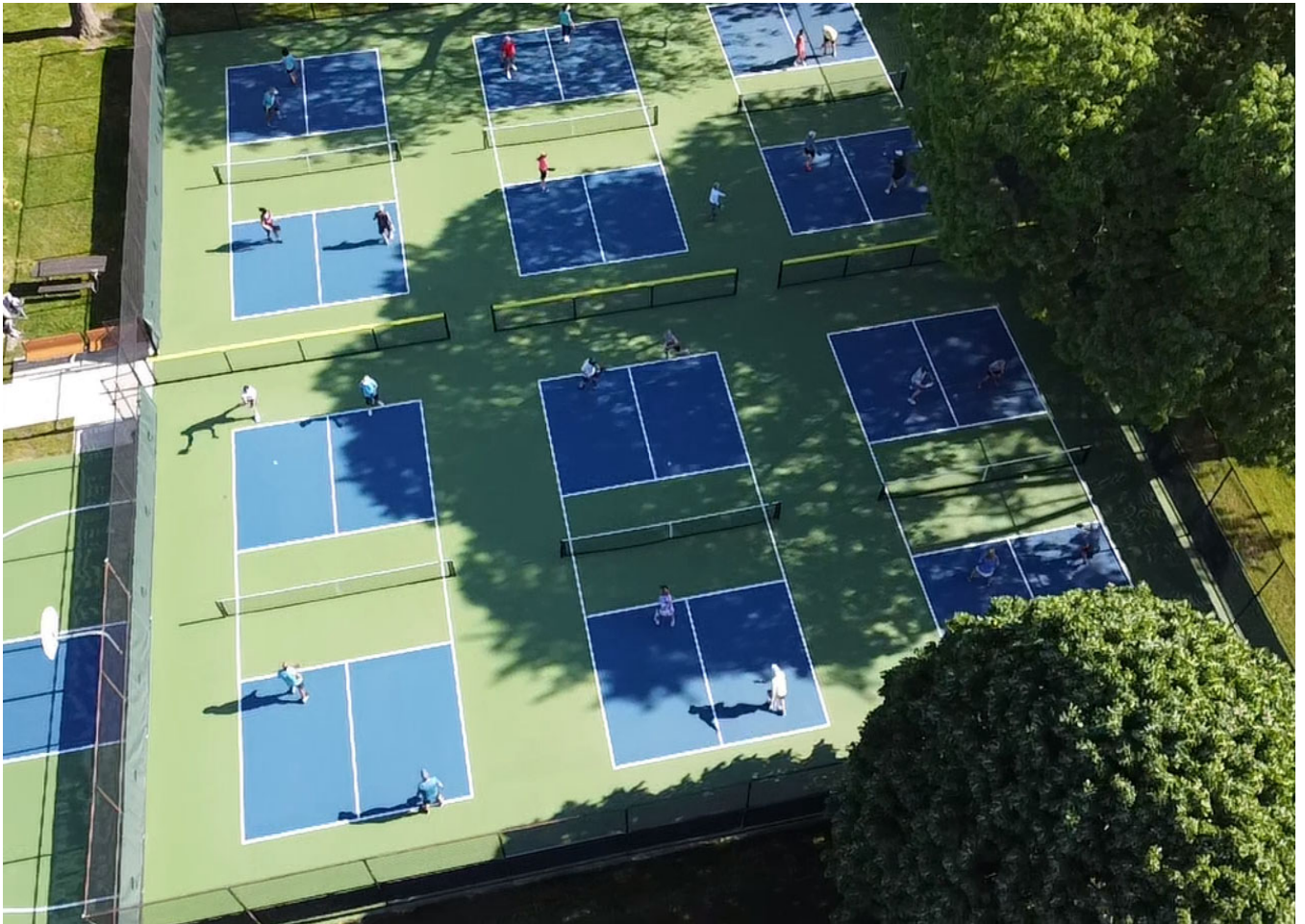
Design By: JC Approved By: MR Date: 06/08/21

Sheet Title:
GRADING AND PAVING PLAN

Sheet No:
C-V301



VOLZ PARK



Project Type (From Above)	Project Category (From Above)	Media File #/Name	Project Category Cost	ADA Portion of Project Cost	% ADA Dollars Requested
---------------------------	-------------------------------	-------------------	-----------------------	-----------------------------	-------------------------

Routes and Surfaces	Accessible Routes, Athletic Surfaces, Sidewalk	Volz 1,2 & 3	200000	15750	7.88%
					#VALUE!
					#DIV/0!
					#DIV/0!
					#DIV/0!
					#DIV/0!
					#DIV/0!
					#DIV/0!
					#DIV/0!
					#DIV/0!
					#DIV/0!
					#DIV/0!
					#DIV/0!
					#DIV/0!
					#DIV/0!
					#DIV/0!
					#DIV/0!
					#DIV/0!
					#DIV/0!
					#DIV/0!
					#DIV/0!
					#DIV/0!
					#DIV/0!
					#DIV/0!

Total Project Cost	200000
Total ADA Portion of Project Cost	15750
Total % of ADA Dollars Requested	7.88%