

Title	Wedgewood Park	10/31/2024
	by Mark Grassi in Member District ADA Project Request	id. 48689905
	110 W Camp McDonald Rd Prospect Heights, Illinois 60070 United States 8473942848 mgrassi@phparks.org	

Original Submission 10/31/2024

Score	n/a
Name	Mark Grassi
Job Title	Superintendent of Parks and Facilities
E-mail Address	mgrassi@phparks.org
Phone Number	8476664867
Park District	Prospect Heights
Project Location	Wedgewood Park
Project Status	New
Project Type	Recreation Facilities and Amenities Routes and Surfaces
Recreation Facilities and Amenities- select a Project Category below:	Playgrounds- Play Components Benches- Picnic Tables
Routes and Surfaces- select a Project Category below:	Accessible Routes- Means of Egress Play Surfaces Ramps Walking Surfaces

Benefits of the Project	The Prospect Heights Park District was awarded \$275,000.00 for the FY 2022 OSLAD grant by the Department of Natural Resources for East Wedgewood Park to redevelop its park features such as the local playground, paths, and athletic surfaces and amenities. The district has invested in several accessible designs and improvements towards various aspects of the playground and routes for the purpose of not only maximizing community participation of all ages and abilities, but to enhance experiences for residents who require special needs or accommodations. With the new construction of compliant playground features in addition to incorporating routes, ramps, and improved surfacing, we hope to create more opportunities that connect individuals within Wedgewood Park that depend on these accessible designs that not only meet but exceed ADA standards
-------------------------	--

Items that will become ADA Compliant	The items that will become ADA compliant are concrete and asphalt walkways, means of accessing the play area through ramps and surfacing, accessible play components via transfer within the playground, fitness equipment and park benches.
--------------------------------------	--

The project is designed or constructed, or applies human resources, to comply with:	The 2010 Standards for Accessible Design The Illinois Accessibility Code ASTM F 1951 Standard for Accessible Playground Surfaces ASTM Standard for Accessible Exercise Equipment Agency's ADA Transition Plan
---	---

Upload Project Related Files, Photos, Videos or Audio

[Wedgewood_Park_Drawing_-_Drainage_and_Layout.pdf](#)

[Wedgewood_Park_ADA_Elements_from_JSD.pdf](#)

[Wedgewood_Park_-_ASTM_Certified_EWF.pdf](#)

[Wedgewood_Park_Photos.docx](#)

[Prospect_Heights_PD_OSLAD_Wedgewood_Award_Letter.pdf](#)

[Prospect_Heights_Park_District_Proposal_for_SRA_Levy_Funds_-_Wedgewood.docx](#)

[East_Wedgewood_Park_Bid_Tabulation_from_JSD.pdf](#)

[East_Wedgewood_Park_DRAFT_MASTER_PLAN.pdf](#)

Budget Table for ADA Related Expenses

[Budget Table.xlsx](#)

ADA Dollars Requested	139325
-----------------------	--------

Notes related to
requested amount

Referring to the "bid tabulation document", the total concrete work is listed as \$30,000.00. The Prospect Heights Park District is only requesting half of the total amount of the concrete work to accurately represent the 5ft accessible walking path around the park as shown on the drawing. The TOTAL cost of this section is \$89,797.40 (a combination of \$75,977.00 for the sub total concrete/asphalt work and \$13,820.40 for the EWF mulch, highlighted below under "play area").

Within the "ADA Elements document", the TOTAL cost is 114,234.00 (a combination of playground components and benches).

October 31, 2024

Ms. Tracey Crawford, CTRS, CPRS, Executive Director
Northwest Special Recreation Association
3000 Central Rd. – Suite 205
Rolling Meadows, IL 60008

Re: NWSRA Use of Accessibility Funds

Dear Ms. Crawford,

The Prospect Heights Park District was awarded \$275,000.00 for the FY 2022 OSLAD grant by the Department of Natural Resources for East Wedgewood Park to redevelop its park features such as the local playground, paths, and athletic surfaces and amenities. The district has invested in several accessible designs and improvements towards various aspects of the playground and routes for the purpose of not only maximizing community participation of all ages and abilities, but to enhance experiences for residents who require special needs or accommodations. With the new construction of compliant playground features in addition to incorporating routes, ramps, and improved surfacing, we hope to create more opportunities that connect individuals within Wedgewood Park that depend on these accessible designs that not only meet but exceed ADA standards.

This proposal summarizes the specific playground and route accessible components of the overall Wedgewood Park project to create more opportunities for inclusion. With the following items below, we request NWSRA to authorize the Prospect Heights Park District to supplement these accessibility improvements with ADA funds.

1. East Wedgewood Park

- a. One concrete walking path 1,500 sq. ft. connecting the public street to the playground and pavilion.
- b. One asphalt walking path 115 sq. yds. extending to both portions of the concrete path to various athletic features on the opposite sides of the park.
- c. Two concrete accessible ramps allowing entrance into the 2-5 playground area and 5-12 playground area.
 - i. The accessible concrete and asphalt paths meet the current 2010 ADA Standards for Accessible Design as cited in Chapter 2 Section 206 Accessible Route Within a Site, Chapter 4 Section 402 Accessible Routes. We request authorization for the Prospect Heights Park District to use ADA funds in the amount of **\$15,000.00** for improvements and work associated with the concrete path (half of the subtotal of the concrete work) **\$22,770.00** for the asphalt path, and **\$1,890.00** for the concrete ramps.
- d. 25 ADA playground components accessible via transfer within the 2-5 playground area, 5-12 playground area and fitness station.

- i. The playground components were selected to provide play equipment that is accessible to children with disabilities, mobility issues, and require special accommodation in accordance with the US CPSC Public Playground Safety Handbook, the ASTM Standard for Accessible Exercise Equipment and the ADA Accessibility Standards for Play Areas. We request authorization for the Prospect Heights Park District to use ADA funds in the amount of **\$85,145.00.**
- e. Two accessible-designed park benches that sit along the path that circle the park.
 - i. Two accessible benches via transfer that meet the current 2010 ADA Standards for Accessible Design as cited in Chapter 9 Section 903 Benches. We request authorization for the Prospect Heights Park District to use ADA funds in the amount of **\$700.00.**
- f. 198 cu. Yds of ASTM certified engineered wood fiber within the play area
 - i. The engineered wood fiber surfacing of the playgrounds meet the current 2010 ADA Standards of Accessible Design as cited in Chapter 2 Section 206 Accessible Route within a Site, Chapter 3 Building Blocks Section 302 Floor and Ground Surfaces and IPEMA Certification. We request authorization for the Prospect Heights Park District to use ADA funds in the amount of **\$13,820.00.**

In summary, we respectfully request authorization for the Prospect Heights Park District to use ADA funds in the **total amount of \$139,325.00** for accessibility improvements at East Wedgewood Park.

Mark Grassi
Superintendent of Parks and Facilities
Prospect Heights Park District



Illinois Department of Natural Resources

One Natural Resources Way Springfield, Illinois 62702-1271
www.dnr.illinois.gov

JB Pritzker, Governor
Colleen Callahan, Director

July 8, 2022

Prospect Heights Park District
110 West Camp McDonald Road
Prospect Heights, IL 60070-1532

RE: FY 2022 OSLAD Application
Grant Award: \$ 275,000.00
East Wedgewood Park

I am pleased to inform you that the above referenced project has been approved at the dollar amount indicated, as part of the State's FY 2022 Open Space Lands Acquisition and Development (OSLAD) grant program. The quality of your plans to enhance open space opportunities for Illinois' citizens is recognized by your selection in this year's very competitive selection process.

Your project was one of 87 local outdoor recreation projects, representing \$30.3 million in funding assistance, approved by the Department for FY 2022 OSLAD grant funds.

You will soon be contacted with detailed information and instructions concerning implementation of your project and program compliance responsibilities. Please do not proceed with your project until you have received these instructions.

Once again, congratulations on being one of the successful applicants and thank you for your dedicated efforts to improve outdoor recreation opportunities in Illinois.

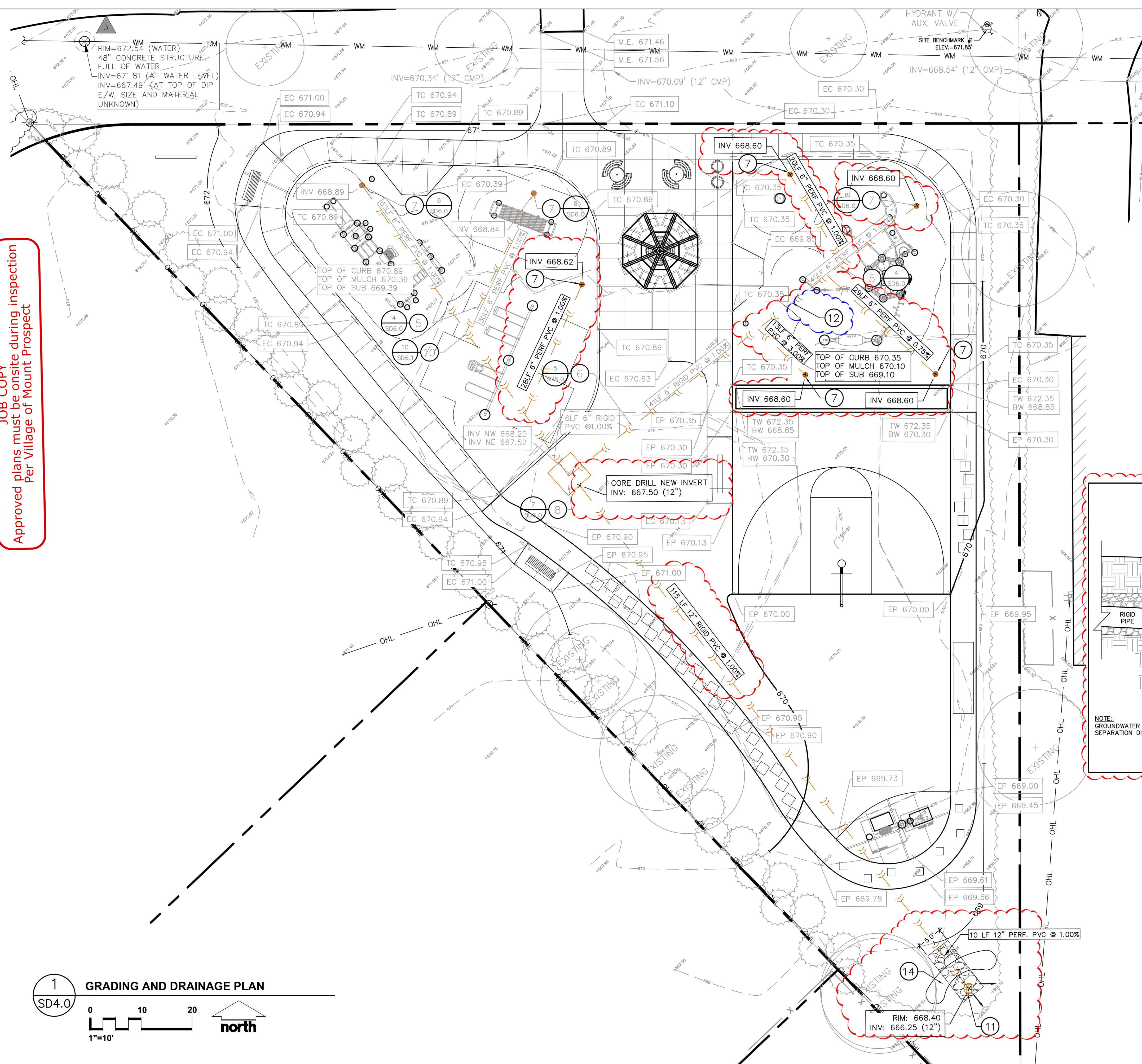
Sincerely,

A handwritten signature in cursive script that reads "Colleen Callahan".

Colleen Callahan
Director

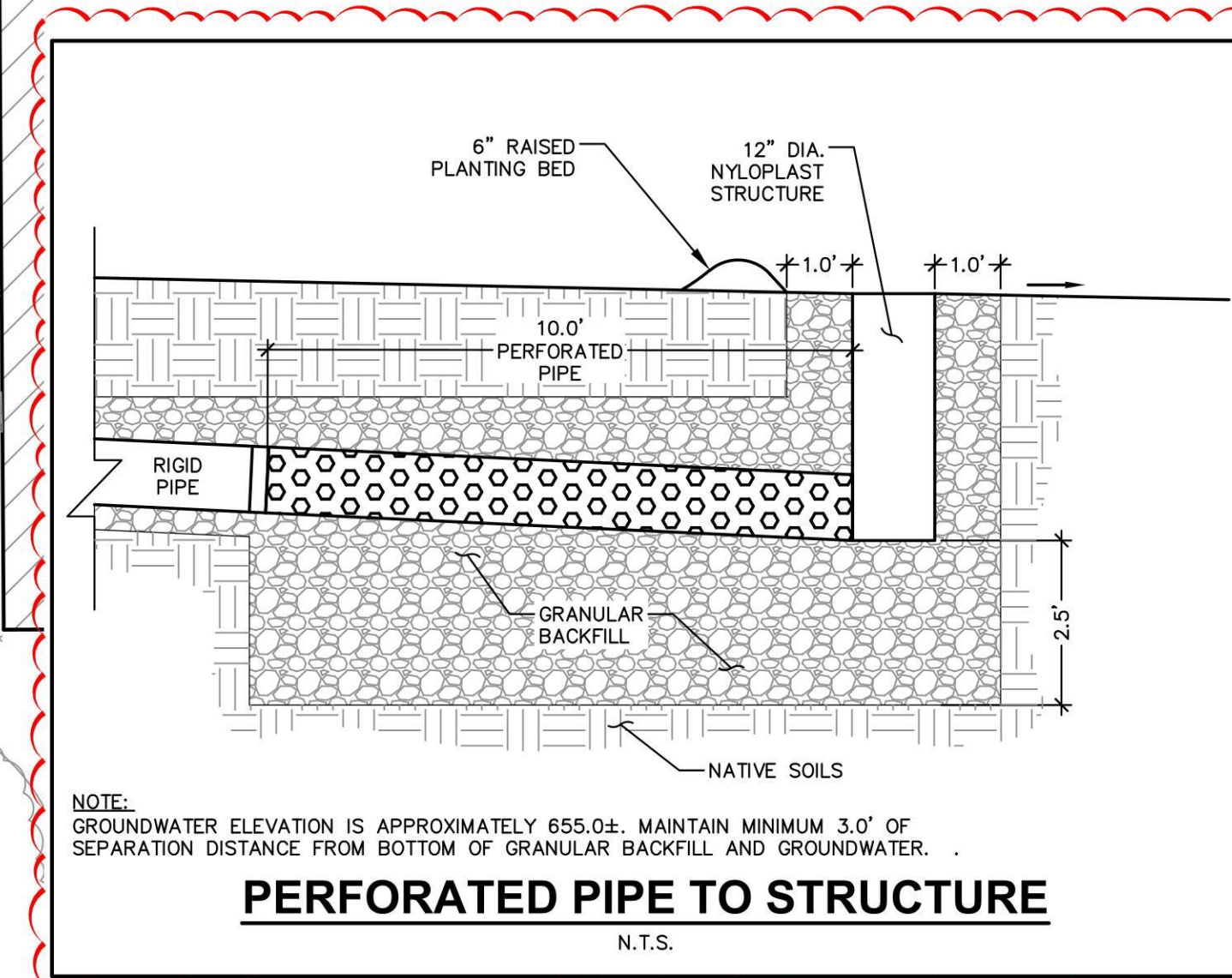
File: \JSD\Chicago projects\2022\2211880\DWG\Landscape Architecture\22-11880_4.0 Grading Plan.dwg Layout: 4.0 GRADING PLAN User: sarah.dreier Plotted: Sep 17, 2024 - 8:58am Xrefs:

JOB COPY
Approved plans must be onsite during inspection
Per Village of Mount Prospect



GRADING & DRAINAGE PLAN NOTES:

- ALL SURFACES SHALL BE GRADED FOR POSITIVE DRAINAGE. MAXIMUM SLOPE OF 20:1 ON ALL PAVED AREAS UNLESS OTHERWISE NOTED. SLOPES GREATER THAN 20:1 WILL NOT BE ACCEPTED.
- SLOPES BETWEEN SPOT ELEVATIONS ON PAVEMENT SHALL BE CONSISTENT.
- CONTRACTOR TO DISTRIBUTE TOPSOIL FOR ALL TURF AREAS TO AVERAGE DEPTH OF 6" TO ACHIEVE THE GRADES SHOWN AND PLANTING AREAS TO AVERAGE DEPTH OF 12" TO ACHIEVE THE GRADES AS SHOWN ON THE PLANS.
- PROMPTLY NOTIFY THE LANDSCAPE ARCHITECT IF UNSATISFACTORY SUB-GRADE MATERIALS ARE DISCOVERED. NO PAYMENT WILL BE MADE FOR ADDITIONAL WORK COMPLETED WITHOUT PRIOR AUTHORIZATION BY OWNERS REPRESENTATIVE.
- FURNISH AND INSTALL 6" PERFORATED SDR-26 WITH 3/4" WASHED GRAVEL BACKFILL, SOIL SEPARATOR AND FILTER FABRIC SOCK ON ALL PERFORATED PIPE AT ELEVATIONS SHOWN. REVIEW FINAL LOCATION OF DRAINAGE PIPE WITH LOCATION OF APPARATUS AND AVOID ALL VERTICAL ELEMENTS OF THE APPARATUS. SEE DETAIL.
- FURNISH AND INSTALL 6" RIGID NON-PERFORATED SDR-26 WITH POROUS GRANULAR BACKFILL. SEE DETAIL.
- FURNISH AND INSTALL CLEANOUT. SEE DETAIL.
- FURNISH AND INSTALL 6' X 6' X 5' DEEP DRYWELL AND BACKFILL WITH CA-7. DO NOT COMPACT SUBGRADE. SEE DETAIL.
- CONTRACTOR TO VERIFY EXISTING RIMS AND INVERTS ON EXISTING STORM STRUCTURES ON SITE. NOTIFY LANDSCAPE ARCHITECT WITH ANY DISCREPANCIES.
- FURNISH AND INSTALL UNDERDRAIN PIPE TRANSITION. SEE DETAIL.
- INSTALL 12" DIAMETER NYLOPLAST STRUCTURE. SURROUND RIM WITH 12" WIDE AREA OF STONE FOR STORMWATER DISSIPATION.
- UNDERDRAIN ALTERNATE: RE-LAY MAIN UNDERDRAIN AT 0.50% WITHIN EASTERN PLAY AREA. ADJUST SLOPE ON BRANCHES OF UNDERDRAIN APPROPRIATELY AND MAINTAIN POSITIVE DRAINAGE. REMOVE AND REPLACE CONCRETE SIDEWALK AS NEEDED.
- INSTALL 10'x5'x2.5' BED OF STONE AGGREGATE BENEATH THE PERFORATED PIPE NEAR THE STRUCTURE. INSTALL STONE AGGREGATE AROUND ENTIRE STRUCTURE TO 1.0' IN WIDTH.
- 6" RAISED PLANTING AREA.

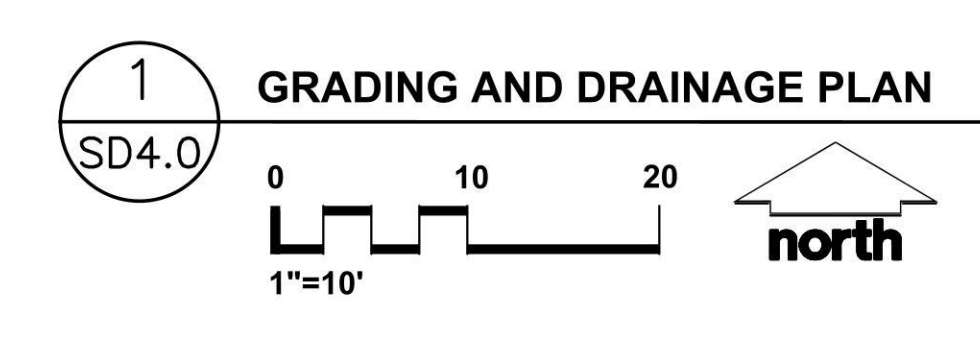



NOTE: GROUNDWATER ELEVATION IS APPROXIMATELY 655.0±. MAINTAIN MINIMUM 3.0' OF SEPARATION DISTANCE FROM BOTTOM OF GRANULAR BACKFILL AND GROUNDWATER.

LEGEND

- SPOT ELEVATION
- EP - EDGE OF PAVEMENT
- FG - FINISH GRADE
- EC - EDGE OF CONCRETE
- BW - BOTTOM OF WALL
- TC - TOP OF CURB
- MATCH - MATCH EXISTING GRADE

BENCHMARKS		
POINT NO.	ELEVATION	DESCRIPTION
01	671.85'	SE BOLT ON HYDRANT ON THE SOUTH SIDE OF OXFORD PLACE AT NORTHEAST CORNER OF PROPERTY AS SHOWN (NAD88)






CREATE THE VISION TELL THE STORY

jsdinc.com

CHICAGO REGIONAL OFFICE
1400 EAST TOWHY AVENUE, SUITE 215
DES PLAINES, IL 60018
P. 312.644.3379

CLIENT:
PROSPECT HEIGHTS PARK DISTRICT



CLIENT ADDRESS:
**110 W CAMP MCDONALD RD
PROSPECT HEIGHTS, IL 60070**

PROJECT:
WEDGEWOOD PARK

PROJECT LOCATION:
**5 W OXFORD PL
MT. PROSPECT, IL 60056**

PLAN MODIFICATIONS:

#	Date:	Description:
1	11.10.22	50% Construction Documents
2	01.09.23	75% Construction Documents
3	02.06.23	100% Construction Documents
4	02.21.23	Issued for Bid
5	08.11.23	Issued for Construction
6	08.21.24	Drainage Revisions
7	09.17.24	Drainage Revisions
8		
9		
10		
11		
12		
13		
14		
15		

Designed By: SCD
Reviewed By: LMV
Approved By: LMV

SHEET TITLE:
GRADING AND DRAINAGE PLAN

SHEET NUMBER:
SD4.0

JSD PROJECT NO: 22-11880

THESE PLANS AND DESIGNS ARE COPYRIGHT PROTECTED AND MAY NOT BE USED IN WHOLE OR IN PART WITHOUT THE WRITTEN CONSENT OF JSD PROFESSIONAL SERVICES, INC.



EAST WEDGEWOOD PARK

FINAL MASTER PLAN



MOUNT PROSPECT, IL

08/17/2021

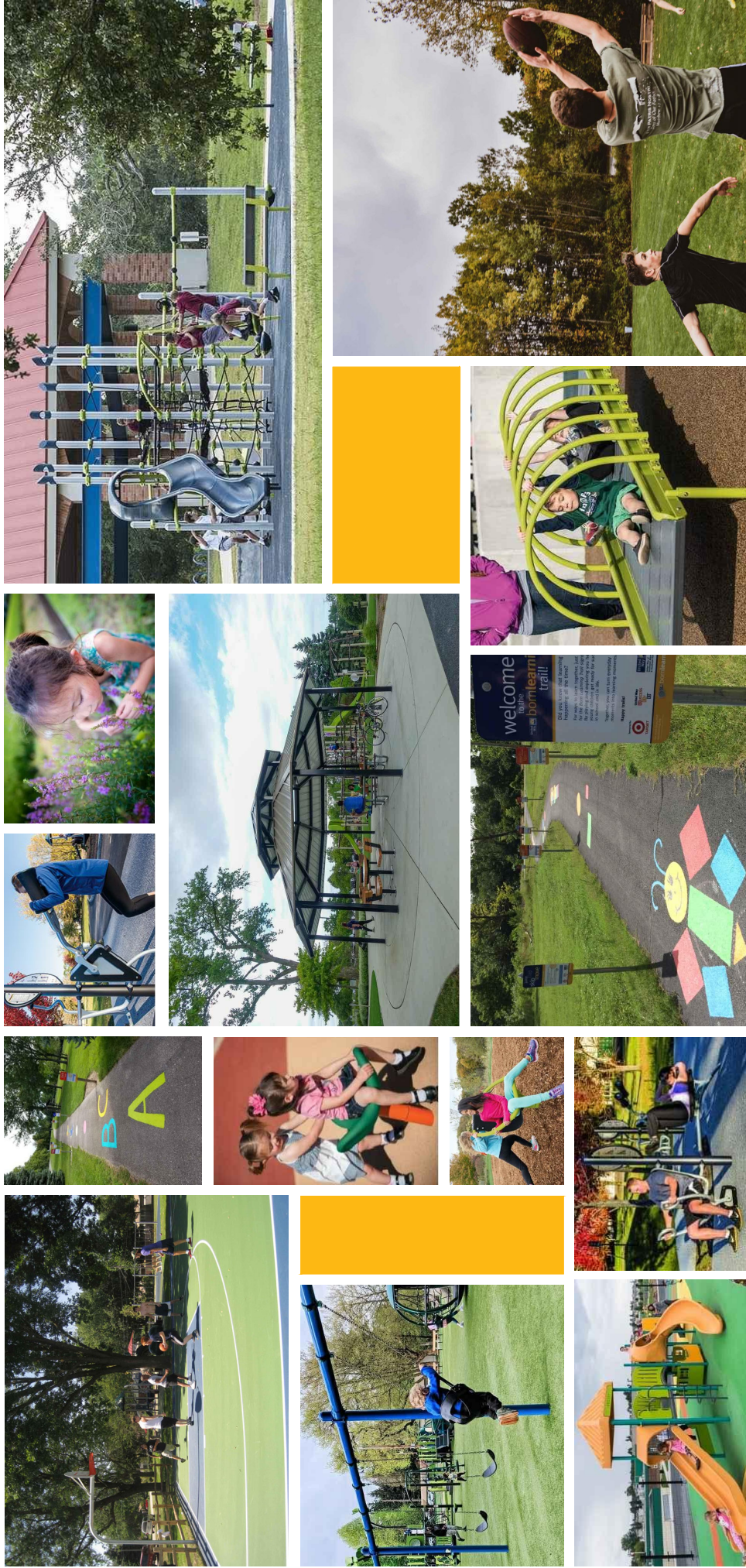
JSD Professional Services, Inc.
Engineers • Surveyors • Planners
20-9908





EAST WEDGEWOOD PARK

REPRESENTATIVE IMAGERY



MOUNT PROSPECT, IL 08/17/2021

2D-59018







Project Type (From ab Project Category (From Above)	Media File #/Name	Project Category Cost	ADA Portion of Project Cate	% ADA Dollars Requested	
Recreation Facilities a	Playgrounds - Play Components and Benches	Wedgewood Park ADA El	114234	85845	75.15%
Routes and Surfaces	Accessible Routes, Play Surfaces, Ramps, Wall	Wedgewood Park Drawir	89797.4	53480	59.56%

#DIV/0!
#DIV/0!
#DIV/0!
#DIV/0!
#DIV/0!
#DIV/0!
#DIV/0!
#DIV/0!
#DIV/0!
#DIV/0!
#DIV/0!
#DIV/0!
#DIV/0!
#DIV/0!
#DIV/0!
#DIV/0!
#DIV/0!
#DIV/0!
#DIV/0!

Total Project Cost	204031.4
Total ADA Portion of Project Cost	139325
Total % of ADA Dollars Requested	68.29%