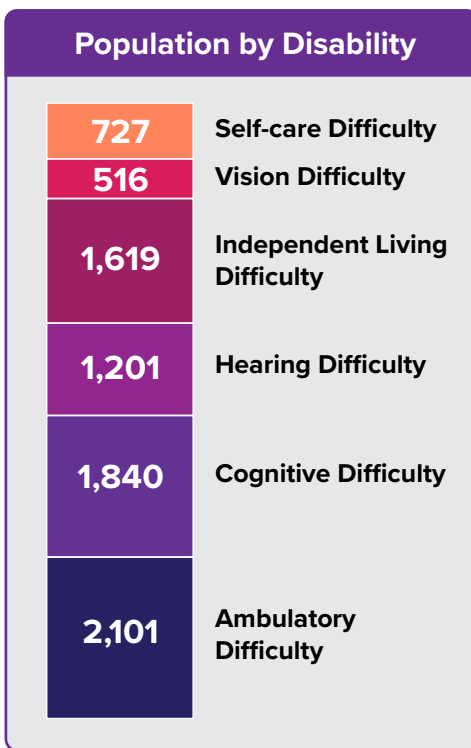
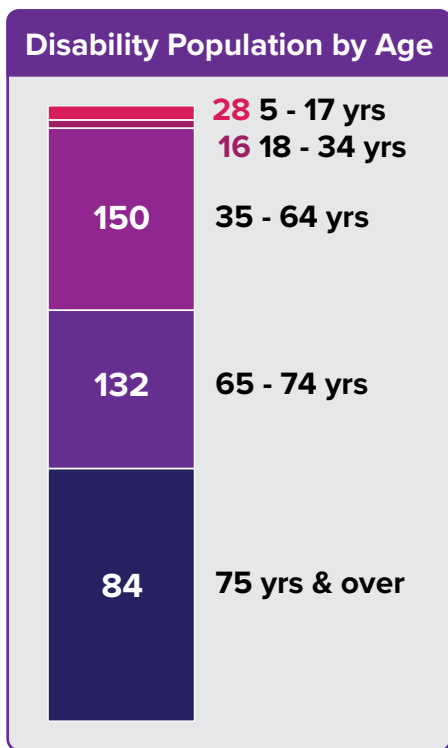
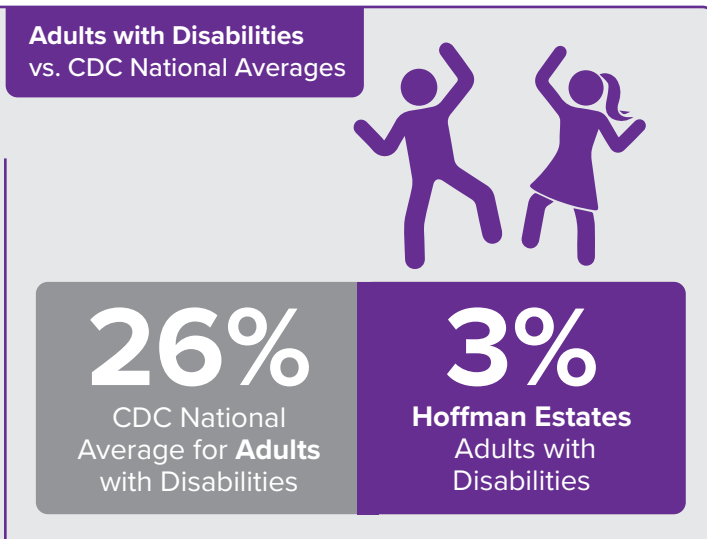
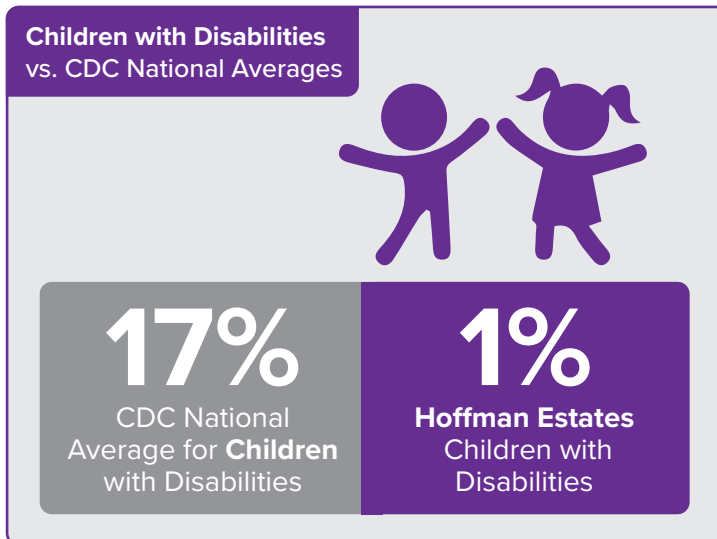
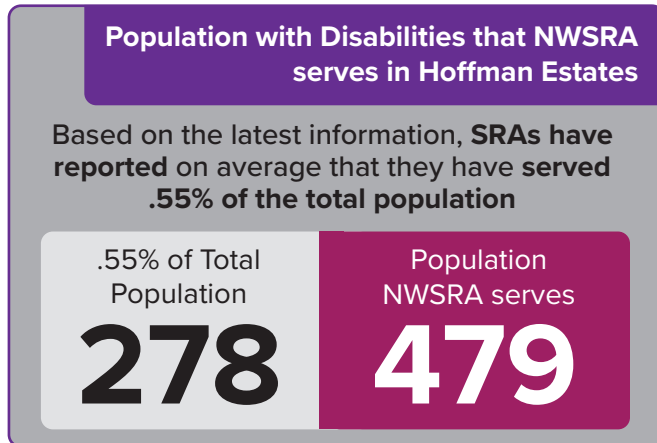
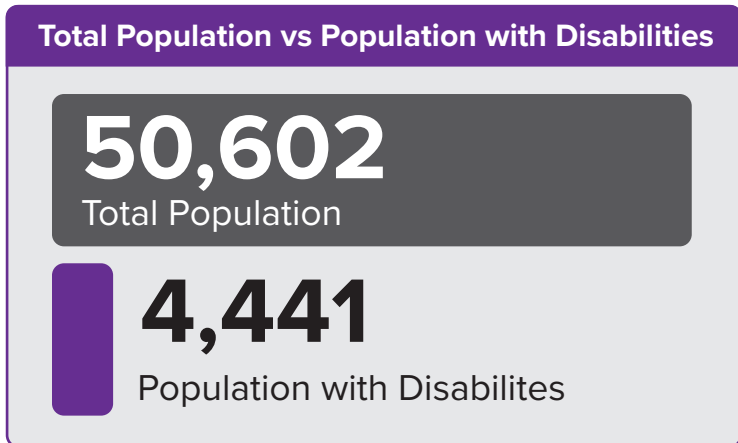




Keep in Mind

Information in the following report was pulled from the most current data available. This data represented is from the U.S. Census along with the American Community Survey (ACS).



Keep in Mind

The questions introduced in 2008 pertaining to disabilities remain the same questions found in the current ACS questionnaires. They cover six disability types:

- Hearing difficulty deaf or having serious difficulty hearing
- Vision difficulty blind or having serious difficulty seeing, even when wearing glasses
- Cognitive difficulty Because of a physical, mental, or emotional problem, having difficulty remembering, concentrating, or making decisions
- Ambulatory difficulty Having serious difficulty walking or climbing stairs
- Self-care difficulty Having difficulty bathing or dressing
- Independent living difficulty Because of a physical, mental, or emotional problem, having difficulty doing errands alone such as visiting a doctor's office or shopping

Respondents who report anyone of the six disability types are considered to have a disability in the eyes of ACS data

Total vs. Disability Population by Sex

Total Population: 50,602

24,657
Male

25,945
Female



Disability Population: 4,441

2,006
Male

2,435
Female



Keep in Mind

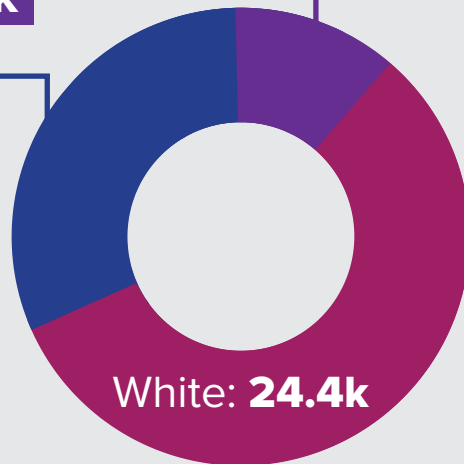
The American Community Survey includes a question that intends to capture current sex; there are no questions about gender, sexual orientation, or sex at birth. Respondents should respond either "male" or "female" based on how they currently identify their sex.

Ethnic Population

Hispanic: 5.0K

Asian: 13.4k

White: 24.4k



3 Largest Ethnic
Groups in
Hoffman Estates

Veteran Population: 1,260

4.2%

Veteran National Average

Hoffman
Estates
Average

2.5%



3 Most Common Veteran Groups

804

Vietnam

146

Gulf War
(1900s)

133

Gulf War
(2001-)