

2021



Annual
REPORT



Welcome

On behalf of NWSRA and SLSF, we would like to thank you for your ongoing commitment and support. To say 2021 was a tough year we know is an understatement. It presented all of us challenges on a multitude of levels. Relationships with our friends, family and loved ones became more important than ever as the pandemic caused us to reflect on what was most important in life. With everything happening in the world around us we are proud to say, our team became stronger and more focused than ever.

NWSRA and SLSF staff at no point took their eyes off our number one goal: providing outstanding recreational opportunities for those with disabilities. We recognized the physical and emotional toll a global pandemic took on everyone, especially those with disabilities. Access to safe recreational opportunities were more important than ever for our participants. With that, the SLSF team recognized its role was more vital than ever to ensure that no participant ever had the barrier of cost stand in the way of participating in recreational programming.

In addition to ensuring recreational scholarships were available to those who needed them, the SLSF team worked harder than ever to ensure they stayed on track to meet their long term goals. To accomplish these goals SLSF needed to run golf outings while following extensive lists of CDC guidelines, host new virtual and hybrid events and create new fundraising endeavors to ensure they not only met but extended their fundraising goals – and that is exactly what they did.

With the SLSF team's effort and your unwavering commitment, SLSF was able to exceed the lofty goals they set forth for themselves. As you progress through this report we want you to know that without your support we would not be here, in 2022, looking back in amazement on the endeavors we have accomplished together despite a global pandemic. Thank you for your support, believing in us and opening up doors for our NWSRA participants.



Tracey Crawford, CPRP, CTRS
NWSRA Executive Director,
SLSF President



Bret Fahnstrom
NWSRA Chair



Kathy Nowicki
SLSF Chair

“Kudos to you and your team for everything especially picking the right people for Michael! You have my heart and as many thanks as I can give.

NWSRA Parent





In 2021, NWSRA and SLSF collectively worked to address the social, physical, and cognitive needs of children and adults with disabilities through outstanding recreational opportunities. From the opening of the community garden at Hanover Park Park District and the installation of a Snoezelen Sensory Room at Wheeling Park District to the start of construction for the sixth programming site at Hoffman Estates Park District - the staff, Boards, families, and supporters worked together to open new doors of opportunity.

Throughout the year, NWSRA continued to provide outstanding programming; both virtual and in-person. Certified full-time staff assisted participants in a wide variety of programs and services while maintaining health and safety.

This year, NWSRA strengthened its bond with the community as we worked together with our local partners to explore new and creative ways to support individuals with disabilities to recreate and have meaningful connections with their peers and their community.

It is due to the generosity and dedication of our partners and people like you that we are able to create new opportunities and incredible experiences for people with disabilities in the Northwest Suburbs. None of this would be possible without your support.

NWSRA

BOARD OF DIRECTORS

Bret Fahnstrom, River Trails

Chair

Christina Ferraro, Prospect Heights

Vice Chair

Carrie Fullerton, Arlington Heights

Rita Fletcher, Bartlett

Ryan Risinger, Buffalo Grove

Ben Curcio, Elk Grove

Bob O'Brien, Hanover Park

Craig Talsma, Hoffman Estates

Robert Dowling, Inverness

Jim Jarog, Mt. Prospect

Michael Clark, Palatine

Kevin Romejko, Rolling Meadows

Diane Hilgers, Salt Creek

Tony LaFrener, Schaumburg

Jay Morgan, South Barrington

Jeff Janda, Streamwood

Jan Buchs, Wheeling



ABOUT US

NWSRA is the largest provider of therapeutic recreation services for children and adults with disabilities in the state of Illinois. As an extension of 17 park districts throughout the northwest suburbs, NWSRA offers public access, year round recreational programming to over 6,000 individuals with disabilities in its service area. The Special Recreation Association (SRA) model is unique to the state of Illinois and leads the nation in inclusion and accessibility for residents with disabilities.

MISSION: We exist to provide outstanding opportunities through recreation for children and adults with disabilities.

VISION: To be a leading force, creating greater options that enrich the life experiences of the participants, families and communities we serve.

CORE VALUES: Teamwork • Respect
Enthusiasm • Collaboration •
Communication

Comprehensive Strategic Plan

2022 - 2024

In 2021 NWSRA completed its final year in the 2017-2021 Strategic Plan. While working to finish achieving its many 2021 goals, NWSRA was simultaneously planning for its future by developing its next strategic plan.

Shortly into the process of developing the 2022-2024 Comprehensive Strategic Plan, we were all hit with something no one saw coming - a global pandemic. In terms of the strategic planning process, it left NWSRA a big decision to make - was developing a strategic plan in the middle of a pandemic right for the organization? There was much discussion around this, but at the end of the day NWSRA has excelled due to always having a plan. It's because of the foundation which was laid, the plans developed, and its ability to execute on those plans, NWSRA has been able to thrive.

With this thinking in mind, there was only one decision to make - move forward with the strategic planning process. Moving into this process no one was entirely sure how participant's feedback would look, but what was soon realized was completing this process during the pandemic provided a unique opportunity. The feedback received from surveys and focus groups was very raw, participants did not hold back, they were very honest with their answers which provided very valuable feedback. The plan's pillars, focuses, goals and action items were all derived from the community, board members, and staff input solicited during the planning process. In developing the plan, opinions were included from staff, board members, resident surveys, staff and community focus groups, board member interviews, and staff and board member feedback.

NWSRA could not be more excited for its future moving into its 2022-2024 Strategic Plan. Please take a moment to visit the NWSRA website to view this plan in its entirety, NWSRA is confident this plan will further strengthen the organization and in turn provide even more opportunities for its participants.



View the complete Strategic Plan at: www.nwsra.org/strategicplan

Our family, and in particular our son, has been very blessed to receive the assistance of the scholarship and has benefited greatly from attending NWSRA programming. We can't thank you enough for your dedication and support.



From NWSRA Scholarship Recipient Family

Programming

DAY CAMP

2021 was a strong year for NWSRA's Day Camps – running 11 unique camps. 6 of these camps were full-day camps spanning 9 weeks where campers participated in a vast array of activities. These camps utilized 2 school and 4 part district facilities – big thanks to the Palatine, Rolling Meadows, Bartlett and River Trails Park Districts for your accommodation. 3 of the camps were cooperative camps with school district 15 and 54 to provide recreation to students after the extended school year program. The last 2 camps were specialty camps that ran for 5 weeks. The first of these specialty camps was hosted at NSSEO's Kirk School and tailored to campers with extensive personal care and medical needs, the second at Sunrise Outdoor Education Center targeted those with a passion for the outdoors. At the end of the summer NWSRA had 166 campers participate in 220 sessions and created countless memories that would last a life time.



Programming

1:1 PROGRAMMING

NWSRA also placed a large emphasis on expanding its 1:1 program offerings. 1:1 programming offers clients an even safer atmosphere and allows Recreation Therapists the ability to focus on their client's individual needs. In 2021 NWSRA expanded its 1:1 programming to Snoezelen Rooms, Club Wellness, the Dream Lab, and the Community Sensory Garden causing registration to grow.

SIBSHOPS

Sibshops provide opportunities for siblings of children with special needs to meet other siblings and engage in peer support in a recreation setting. In 2021 NWSRA's Sibshop Program saw strong growth with increased registration. It hosted its first ever Family Picnic, expanded to 4 locations and trained new facilitators.



Thank you for the NWSRA Bus Visit, Activity Box, and NWSRA swag. And thank you to Katrina and Jordan for making the trip to our house to say hi to Vance. They both, along with NWSRA, have made a positive difference in the quality of his life, and we are appreciative.

NWSRA Parent

New Programming Spaces



NWSRA PROGRAMMING SPACE

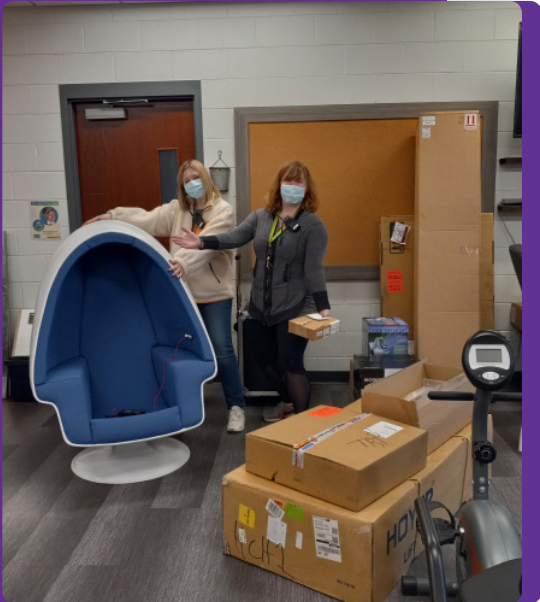
VOGELEI HOUSE - HOFFMAN ESTATES

NWSRA is proud to announce in 2021 it broke ground on its 6th programming space at the Hoffman Estates Park District's Vogelei House. Upon completion of the Vogelei House, the physical spaces necessary for implementing a regional approach to programming will be completed. This will allow for equal access to programming across NWSRA's vast geological footprint. This 3-story farmhouse will provide NWSRA participants in that region a place they can call home. Making this farmhouse fully accessible was no small task – involved was retrofitting it with an elevator, building a 3-story outdoor ramp, moving walls and more. Once complete this space will host a variety of programs including the PURSUIT Community Adult Day Program, walking clubs, Saturday programs, music lessons, special events and so much more.

SNOEZELEN SENSORY ROOM

WHEELING

At the end of 2021 NWSRA is proud to have installed their 4th sensory room in their Wheeling programming space. Through the combined efforts of so many including donors, volunteers and staff the room will act as a valuable resource for the NWSRA team of Certified Therapeutic Recreation Specialists (CTRS). NWSRA CTRSs will now be able to provide clients in that region sensory therapy allowing them to focus on leisure awareness, education, physical, affective, cognitive, emotional, linguistic, social and developmental improvements while keeping all sessions “person centered”.



COMMUNITY SENSORY GARDEN

HANOVER PARK

The NWSRA Community Sensory Garden welcomes individuals of all ability levels to explore, play, learn, and grow in a natural environment. The accessible features within this garden will cultivate an increased connection to nature. NWSRA is proud to offer this inclusive space, which fosters an increased sense of community while providing equitable access to nature. This garden would not have been possible without the collaboration from the Hanover Park Park District and the more than generous support from so many individuals and organizations. NWSRA and the Hanover Park Park District could not be more thrilled to allow all those who wish to connect to nature the opportunity to do so.



Professional Development

CERTIFICATIONS

In order to remain a leader toward the provision of outstanding recreational programs and services, NWSRA staff demonstrate their commitment to professional certification and accreditation. Congratulations to the following newly Certified staff:

Certified Inclusion Assessor

Andrea Griffin
Victoria Gonzalez
Jordan Ross
Clariza Wickell

Certified Therapeutic Recreation Specialist (CTRS)

Celine Ehert
Andi Marfilus
Cassandra Lexa

Certified Park & Recreation Professional (CPRP)

Jacki Moore
Kaila Robinson

Qualified Intellectual Disabilities Professional (QIDP)

Sarah Cuthbert
Danielle Olson
Adrienne Adkins

Generation One SibShops Facilitator

Jacki Moore
Anita Trzebunia
Janae Winston

Healthy Minds Healthy Bodies Certified

Sarah Cuthbert
Celine Ehert
Rebecca Lizalde

AWARDS & RECOGNITION

NWSRA is proud to be recognized on local, state and national levels for its commitment to outstanding recreational programming. Congratulations to the following award winners and staff:

Illinois Jaycees Outstanding Young Person: Humanitarian/Voluntary Leadership

Liz Thomas

Rotarian of the Year: Palatine

Liz Thomas

JCI USA Presidential Medal

Megan O'Brien

American Academy for Park Administrators (AAPRA) Presidents Award

Tracey Crawford

IPRA Board Section Representative

Manuel Aguilar
Victoria Gonzalez

ITRS Director

Lauren Jevaney

ATRA President

Tracey Crawford



Thank you for your great semester. I know how challenging staffing has become and you have done an excellent job providing assistance we needed. I know this has had to help the families transition.

- NWSRA Parent

NWSRA *Administrative Transition*



Congratulations Brian

Congratulations to Brian Selders on his many years of dedicated service. NWSRA wishes him the best of luck in his future endeavors, and looks forward to his successes as he continues his professional career.

Superintendent of Communications & IT Brian Selders accepted a position in the corporate world, continuing his passion for writing in the field of Information Technology.

Brian truly went above and beyond to promote the NWSRA mission, enable growth toward the NWSRA vision and lived the NWSRA Core Values. From all of us, cheers to Brian and his future endeavors!



Welcome Tom

While good byes are always difficult, we are excited to welcome Tom Draper! Previously the Superintendent of Marketing and Communications at the Bensenville Park District, he accepted the same role at NWSRA. Over the course of his career, Tom led the Bensenville Park District through a complete rebranding process; rebuilding their website, re-designing signage, creating new logos and materials and much more. In 2019, the Bensenville Park District won the Overall Agency Showcase competition at the IPRA Annual Conference due to Tom's outstanding efforts.

Tom carries a vast array of knowledge, experience, and leadership qualities that will continue to help NWSRA thrive into the future.

"I could not be more excited to be here at NWSRA. It's an honor to be given the opportunity to work at an agency where achieving marketing goals means creating a positive impact on the lives of those with disabilities.

I could not be more excited to take my previous experience and apply it to an organization like ours, whose services have such a positive impact on the lives of so many."

Addressing Diversity, Equity and Inclusion

Be Yourself, We Like it That Way

Respect is a core value at Northwest Special Recreation Association (NWSRA). Together, we can continue to build an inclusive culture that encourages, supports, and celebrates the diverse voices of our participants, families, staff, volunteers and stakeholders. Embracing diversity in age, gender identity, race, sexual orientation, physical or mental ability, ethnicity, and perspective empowers staff to serve unique needs in innovative ways. At NWSRA, we believe that when people feel respected and included, they can be more creative, innovative and successful. We are committed to working with participants, families, staff, volunteers and stakeholders to continually learn, share and grow with us.

As leaders in the field of Therapeutic Recreation, NWSRA recognized the importance of leading by example during tumultuous times. In order to promote a more inclusive environment, NWSRA staff have:

- **Formed the Inclusion, Diversity, Equity and Inclusion Committee** to advance employees' knowledge of topics relating to diversity, equity and inclusion.
- **Celebrated Black History Month** through a variety of activities.
- **Engaged in Safe Zone conversations** about diversity and racism, as well as a Safe Zone discussion on concerns among the LGBTQ+ community. These discussions enabled staff to listen and learn while sharing their own personal experiences in an open forum.
- **Observed Juneteenth (or Freedom Day)**, celebrating the emancipation of those who had been enslaved in the United States.



 **SAFE ZONE
CONVERSATION**

Financial Highlights

2020 STATEMENT OF ACTIVITIES

Please Note:

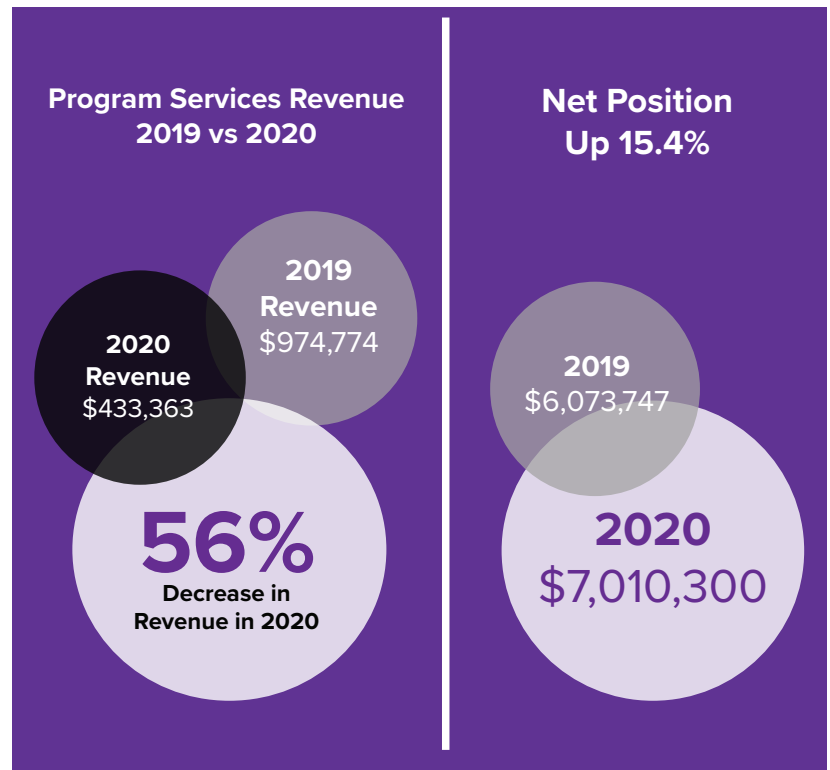
These financial highlights represent NWSRA operating during the height of the COVID-19 pandemic. NWSRA was fortunate enough to retain full-time employees which allowed NWSRA to provide vital virtual programs at no cost to participants for the majority of the fiscal year. This is reflected in the lower than average operating revenue and programming expenses.

OPERATING REVENUE	NWSRA
Member Contributions	\$4,320,307.00
Program Services	\$433,363.00
Fundraising/Contributions	\$211,907.00
Grants	\$ 50,493.00
TOTAL REVENUE	\$5,016,070.00

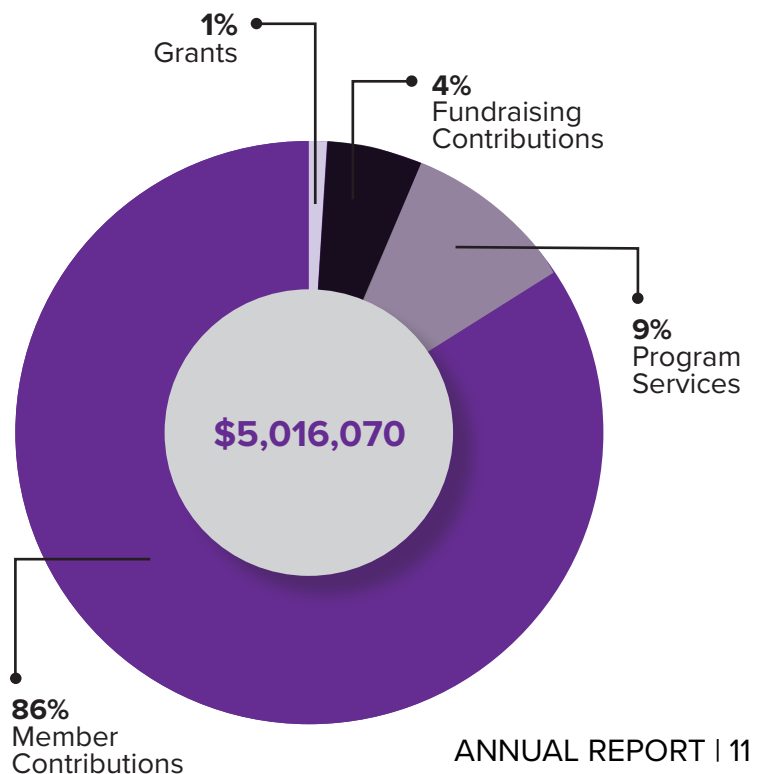
EXPENSES	NWSRA
Programs	\$457,840.00
Unrealized Loss on Investment	\$0.00
Administration	\$3,938,986.00
TOTAL EXPENSES	\$4,396,826.00

NET REVENUE	\$619,244.00
--------------------	---------------------

ASSETS	NWSRA
Cash	\$5,523,691.00
Investments	\$225,675.00
Accounts/Pledges Receivables	\$68,115.00
Prepaid Expenses	\$30,030.00
Capital Assets	\$1,511,074.00
IMRF	\$434,705.00
Liabilities	-\$782,990.00
NET POSITION	\$7,010,300.00



ORGANIZATIONAL REVENUE BY CATEGORY



2021



40  SLSF
EST. 1981
40 YEARS MAKING AN IMPACT

Special Leisure Services Foundation

SLSF
BOARD OF TRUSTEES

Kathy Nowicki
Chair

Al Crook
Vice Chair

Kevin Romejko
Secretary & Organizational Treasurer

Tracey Crawford
President

Carl Arthur
Linda Ballatine
Thomas Campone
Amy Charlesworth
Anthony Gattuso
Dennis Hanson
Diane Hilgers
Jim Houser, Jr.
Jay Morgan
Kathy Nowicki
Terri Oates
Rafal Piontkowski
Tom Perkins
Ryan Risinger
Jonathan Salk
David Speers



SLSF, a 501(c)(3) non-profit foundation, was formed as the fundraising arm of Northwest Special Recreation Association (NWSRA), to provide additional funding needed to maintain quality services, help create innovative programs and facilitate future growth.

SLSF works with individual donors, granting organizations, businesses and community organizations collaboratively to ensure the funding necessary is available to open doors of opportunity for individuals with disabilities through NWSRA recreational programs.

MISSION: We exist to support children and adults with disabilities through philanthropy for Northwest Special Recreation Association.

VISION: Maximizing all philanthropic opportunities to build a future that is diverse and inclusive by opening doors through innovative services and community opportunities.

CORE VALUES: Relationships • Integrity • Social Equity • Sustainability

FUNDING FOCUSES: Transportation • Programs • Inclusion • Scholarships • Athletics



New Fundraising Efforts

CELEBRATE ABILITY A HYBRID GALA

As the committee began planning for another successful Gala, the group decided to offer a hybrid Gala to allow guests to feel comfortable and attend from all across the country. Your impact by attending, sponsoring, and participating in the Gala's events played a huge role in allowing us to continue delivering on our mission.

It's because of your generosity that NWSRA has the ability to dream big and challenge the barriers that stand in the way of providing recreational opportunities to those with disabilities. The funds raised through this event will allow so many to enjoy our programming who may have had the barrier of cost standing in their way of participating in valuable programming. The funds will also play a large role in the opening of our 6th Heart in the Community, at the Hoffman Estates Park District's Vogeley House. We could not be more excited to offer our participants in the region a space they can call home. In addition, the event grossed over \$76,000 to ensure individuals with disabilities have continued opportunities to have fun, make friends, go new places and celebrate their lives



40 SLSF
40 YEARS MAKING AN IMPACT

Celebrate Ability Gala

182 GUESTS IN ATTENDANCE
\$65,500.00 BUDGETED REVENUE
\$76,606.24 ACTUAL REVENUE

SLSF's first hybrid event, and
it was a success!



224 GUESTS IN ATTENDANCE
\$24,500.00 BUDGETED REVENUE
\$34,822.02 ACTUAL REVENUE

SLSF held the 1st virtual GMFS and attracted attendees from all over the country.

GOLD MEDAL FASHION SHOW A VIRTUAL FASHION SHOW

Thank you for being a part of this amazing show! While the show looked much different from years past, we were excited to learn more about each of the models and celebrate their favorite things! Thank you for attending, sponsoring, donating and cheering on our models. Please know that because of YOU, SLSF will be able to provide funds to NWSRA to thousands of children and adults with disabilities in your community to recreate, grow and thrive in NWSRA programs. We are humbled and grateful for your continued support!

New Fundraising Efforts

DOUBLE GOOD POPCORN COMPETITION

SLSF partnered with Double Good to sell gourmet popcorn, with proceeds benefiting SLSF. This year, our PURSUIT Double Good Popcorn Fundraiser and competition was a huge success! Popcorn sales reached a record high of \$9,360 with \$4,680 going to SLSF! In first place, raising \$3,041, please join us in congratulating PURSUIT Buffalo Grove who received a celebratory pizza party! Our other sites also boasted strong sales as follow: Mt. Prospect \$1,968, Hanover Park \$1,792, Rolling Meadows \$1,324 and Wheeling \$1,235! Thank you to our 193 supporters from 14 different states! We truly appreciate all your support!



ADDITIONAL FUNDRAISERS

As fundraising efforts and subsequent dollars were limited due to the restrictions imposed due to the COVID-19 pandemic, SLSF developed additional ways to maintain connections with its donors. The following additional fundraisers provided new opportunities for partnership:

- Dine to Donate- *SLSF partnered with Portillo's to give donors a way to support SLSF while dining at local establishments.*
- Flower Power Fundraiser
- November & December Kilwins of Arlington Heights Fundraiser
- Autism Speaks



Golf Outings

BUFFALO GROVE GOLF CLASSIC

110 golfers in attendance
\$29,052.00 budgeted revenue
\$38,836.00 actual revenue



The outing raised the most money this year and the Rotary Club received their largest check from the outing!

PALATINE HILLS GOLF CLASSIC

126 golfers in attendance
\$16,650.00 budgeted revenue
\$33,275.58 actual revenue



This year the outing sold out and brought in many new faces to the outing!

MORETTI'S/NWSRA GOLF CLASSIC

69 golfers in attendance
\$18,750.00 budgeted revenue
\$21,445.00 actual revenue



SLSF and Moretti's/AlaCarte were excited to be back out on the course!

ARLINGTON CLASSIC GOLF OUTING

72 golfers in attendance
\$20,980.00 budgeted revenue
\$25,065.00 actual revenue



The Duffer wasn't added this year but will be brought back in 2022.

WOMEN'S GOLF OUTING

90 golfers in attendance
\$20,200.00 budgeted revenue
\$27,876.33 actual revenue



Six new caddies attended and helped raise over \$10,211 in the caddy auction.

SLSF *Administrative Transition*



Congratulations Cathy

Congratulations to Cathy Splett on her many years of dedicated service. SLSF wishes her the best of luck in her future endeavors, and looks forward to her successes as she continues her professional career.

Superintendent of Development Cathy Splett accepted the position of Administrative Assistant at NSSRA, taking a break from the fundraising world to enhance her administrative skills.

Cathy truly went above and beyond to promote the SLSF mission and enable growth toward the SLSF vision. From all of us, cheers to Cathy and her future endeavors!



Welcome Anne

We are excited to welcome Anne Kiwala! Previously the Executive Administrator at CrossCountry Mortgage, she has accepted the role of Superintendent of Development at NWSRA. Anne comes with a wealth of experience in relationship building and development, marketing expertise, and managerial skills. Her efforts led to the enhancement of CrossCountry Mortgage's customer base while leading a team of professionals to tackle a variety of lead enhancement initiatives.

"It is my honor to be joining NWSRA and SLSF and this exceptional team of passionate and dedicated individuals. It is truly an exciting time to be a part of an organization that makes a daily pursuit of conquering every obstacle to serve participants and families – thanks to your stewardship and generosity!"

I look forward to working closely with each and every one of you to work toward making our fundraising goals a reality. This organization truly is the heart of the community and it is my privilege to be a part of it.

I am confident that my professional experience will continue the atmosphere of innovation and positivity that will lead SLSF strongly into the next 40 years."

Financial Highlights

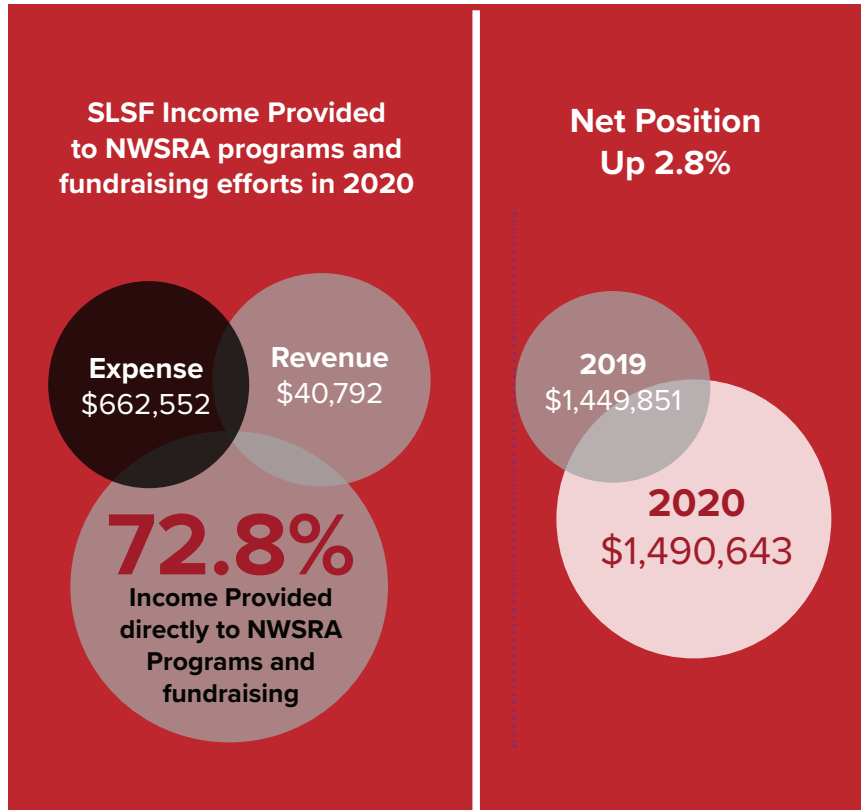
2020 STATEMENT OF ACTIVITIES

OPERATING REVENUE	SLSF
Fundraising/Contributions	\$ 608,342.00
Grants	\$ 74,436.00
Miscellaneous	\$ 124,103.00
TOTAL REVENUE	\$806,881.00

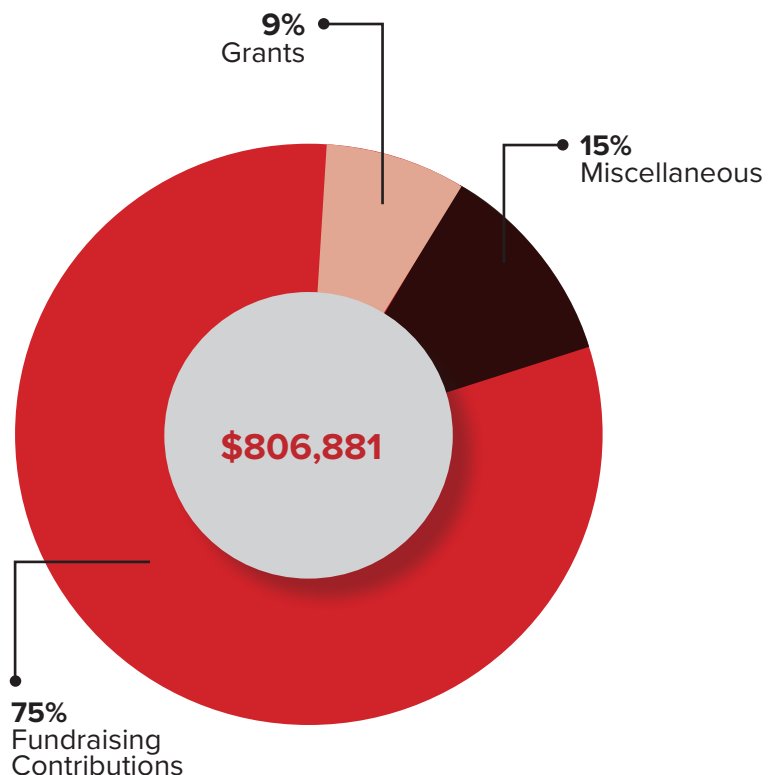
EXPENSES	SLSF
NWSRA Programs	\$662,552.00
Unrealized Loss on Investment	\$0.00
Administration	\$103,537.00
TOTAL EXPENSES	\$766,089.00

NET REVENUE	\$40,792.00
--------------------	--------------------

ASSETS	SLSF
Cash	\$347,438.00
Investments	\$1,136,479.00
Accounts/Pledges Receivables	\$3,290.00
Prepaid Expenses	\$3,436.00
Capital Assets	\$0.00
IMRF	\$0.00
Liabilities	-\$0.00
NET POSITION	\$1,490,643.00



ORGANIZATIONAL REVENUE BY CATEGORY



SLSF GRATEFULLY THANKS THE FOLLOWING SUPPORTERS FOR THEIR DONATIONS THROUGHOUT 2021

GRANTORS

Chester County Community Foundation
Elk Grove Township
Illinois Department of Transportation
Maria Bustamante
Mechdyne
Mechdyne Corporation
Mitsubishi Electric Automation, Inc.
Nicole Clifton
Northwest Community Healthcare
Palatine Township
Rotary Club of Buffalo Grove
Rotary Club of Schaumburg/Hoffman Estates
The Jeff Elko Memorial Fund
UPS Foundation
Wheaton Franciscan Sisters Corporation
Zurich North America

CIVIC GROUPS

American Legion Baseball, Mt. Prospect Post 525
Amita Alexian Brothers Health Arboretum Club Golf Course
Arlington Heights Chamber of Commerce
Arlington Heights Lions Club
Arlington Heights Park District
Arlington Heights Police Department
Arlington Lakes Golf Course
Arlington Lanes
Autumn Leaves of Arlington Heights
Autumn Leaves of South Barrington
Bartlett Park District
Big Deal Productions
Brunswick Zone-Mount Prospect
Buffalo Grove Fire Department
Buffalo Grove Park District
Camelot School
Carl Sandburg Jr. High
Central Road School
Chevy Chase Country Club
Chicago District Golf Association
Clearbrook
Connect to Community, Inc.
Einstein Elementary School
Elk Grove Bowl
Elk Grove Park District
Freedom Golf Association
Grace Lutheran Church
Hanover Park Park District
Hanover Park Senior Center
Healthy Minds/Healthy Bodies
Hoffman Estates Chamber of Commerce
Hoffman Estates Park District
Inverness Park District
John Conyers Learning Academy
Journeys/PADS
JP Woods Martial Arts

Keenyville School District 20
Kenneth Young Center
Kimball Hill School
Kirk School
Kiwanis Club of Palatine
Knights of Columbus #4977
Lend Me Your Ears
Meadows Christian Fellowship
Meals on Wheels
Miner School
Mitsubishi VISION Committee
Mt. Prospect Chamber of Commerce
Mt. Prospect Golf Club
Mt. Prospect Junior Women's Club
Mt. Prospect Park District
New Connections School
Northwest Community Healthcare
Northwest Covenant Church
NSSEO
NWSRA Lightning Booster Club
Old Orchard Country Club
Once and Again Resale Shop
Palatine Chamber of Commerce
Palatine Golf Association
Palatine Hills Golf Course
Palatine Jaycees
Palatine Park District
Palatine Women's Club
Poplar Creek Bowl
Project Linus
Prospect Heights Park District
River Trails Park District
Rolling Meadows Chamber of Commerce
Rolling Meadows Events Foundation
Rolling Meadows Park District
Rotary Club of Arlington Heights
Rotary Club of Bartlett
Rotary Club of Barrington Breakfast
Rotary Club of Buffalo Grove
Rotary Club of Elk Grove
Rotary Club of Palatine
Rotary Club of River Cities
Rotary Club of Schaumburg AM
Rotary Club of Schaumburg/Hoffman Estates
Salt Creek Rural Park District
Schaumburg Golf Club and Academy
Schaumburg Jaycees
Schaumburg Library
Schaumburg Park District
Schaumburg Professional Firefighters School District 15
School District 25
School District 54
School District 59
Sky Center Martial Arts
South Barrington Park District
State Rep. Dan Didech
State Rep. Dave McSweeney
State Rep. Diane Pappas
State Rep. Fred Crespo
State Rep. Jonathan Carroll
State Rep. Karina Villa

State Rep. Mark Walker
State Rep. Marty Moylan
State Rep. Michelle Mussman
State Rep. Tom Morrison
State Sen. Ann Gillespie
State Sen. Cristina Catro
State Sen. Dan McConchie
State Sen. Jim Oberweis
State Sen. Julie Morrison
State Sen. Laura Murphy
State Sen. Terry Link
State Sen. Thomas Cullerton
Streamwood Park District
Sunrise Lake Outdoor Education Center
Sunshine Through Golf
Thrown Elements Pottery
Timber Ridge School
Township High School District 211
Township High School District 214
Trinity Lutheran Church
US Rep. Janice Schakowski
US Rep. Raja Krishnamoorthi
US Rep. Sean Casten
US Sen. Richard Durbin
US Sen. Tammy Duckworth
Wheeling Park District
Willow Creek Community Church
Winston Knolls School
Women's Club Of Inverness

EVENT SPONSORS

Aaron Appell, DDS
Abbington Distinctive Banquets
Adriane Johnson
Al Crook
Ala Carte Entertainment
Allen Gabe Law LLC
Amy Charlesworth
Andrew Bennett
Anytime Fitness
APC Financial Group, LTD.
Arboretum Golf Club
Arlington Heights Ford
Arlington Heights Park District
Arlington Security Systems
Baird & Warner - Julie Murtaugh
Benjamin F. Edwards - David Hanson
Beth Anne Ausnehmer
Betsy Kmiecik
Bob Whisler
Brandt Accounting
Brian Meyer
Buffalo Grove Bank & Trust
Buffalo Grove Fire Department
Buffalo Grove Park District
Buffalo Grove Police Department
C - Soap
Carly Mandernach
Carmen Molinaro
Carolyn Kolbaba
Cathy Splett
CDE Collision Center

Please forgive and bring to our attention any mistakes or omissions. We deeply appreciate all who have helped SLSF provide recreational opportunities for individuals with disabilities

Chiro One Wellness Centers
Christina Ferraro
Clearbrook
Colleen McGill-Getz
Colony Brands & Affiliations
Consumers Cooperative Association
Cornerstone National Bank & Trust Co.
Corporate America Family Credit Union
Cuervo Gold
Culver's
Dakota-K Auto Repair & Tire Center
Dane Bragg
Darren Boundy
David Weiner
Debbie Nelson
Deep Eddy
Diane Maxwell
Dimension Living
Distinctive Home Renovations, Inc.
Drost, Kivlahan, McMahon & O'Connor, LLC
Edward Jones
Edward Jones Company
ERG
Ernest Costello
F.H. Paschen
Finkel Martwich & Colson P.C.
Focused Eye Care
Fred Hall
FT Cares Foundation
Gerber Collision & Glass
Gerry's Cafe
Get Fresh Produce
Gewalt Hamilton Associates, Inc.
Glueckert Funeral Home, Ltd.
Golf Dome at the Buffalo Grove Park District
Grand Frame, Inc.
Greco & Sons
Insperity
J & J Ventures Gaming LLC
J.C. Restoration
James Happel
James Moyna
James J. Bertucci
JMM CPA LLC
Joey's Beef
John Amling
John Jawor
K Auto Repair
Keller Williams Real Estates
Kevin Romejko
Kloepfer Insurance Services, Inc.
Kloss Distributing
Kolbi Pipe Marker Co.
Larry Kushner
Lavelle Law
Law Office of Jack Shapiro
Law Offices of Jeffrey R. Gottlieb, LLC
Legat Architects
Leonard Nowak
Leslie Forman
Liberty Mutual Insurance
Linda Borton-Sobon
Lisa Siwek
Liz Thomas
Lynn Crawford

Marc Spero
Marc Poulos Painting
Marge Janovics
Maria Bellantuono
Marilyn Genter
Mary Guenther
Mary Houser
Mary Stitt
Melon Ink
Menconi Terrazzo
Metro Federal Credit Union
Metropolis Performing Arts Centre
Michelle Hess
Michelle Stuercke
Mike Rylko
Mike Terry
Mitsubishi Electric Automation Inc.
Money Management Educators
Mt. Prospect Park District
Neimann Brothers Company, Inc.
New York Life
Northwest Community Healthcare
Northwest Eye Physicians
Northwest Speech & Hearing, Ltd.
Orthosynetics Aylward & Associates, Dr. Gerry
Palatine Library
Palatine Park District
Palatine Park Foundation
Palatine Public Library District
PBJ Food Distributors, Inc.
Pepsi Americas
Pinderski & Pinderski
Pomilla Properties, Inc.
Porte Brown, LLC. Certified Public Accountants
Quintin Sleigh
Republic Services
Richard Kluck
River Trails Park District
Riverside Medical
Rolling Meadows Park District
Ron Skwarek
The Rotary Club of Palatine Foundation
Scheck & Sires: A Hanger Clinic
Schwartz Wolf & Bernstein LLP
Seafood Merchants
Shawn Collins
Smolka Law Group
Speer Financial, Inc.
State Farm Insurance
Suburban Accents
Sunset Foods
Supreme Lobster
Sysco Foods
Terri Oates
The BIG Kid
The Continental Restaurant
The Law Firm of Neil S. Zweiban, Chartered
The Law Firm of Wendy R. Morgan, Ltd.
Tony's Fresh Market
Town & Country Distributors
Unemployment Consultants, Inc.
Vicarious Multimedia
Village Bank & Trust

Visualedge Creative Services, Inc.
Weber Stephen Products, LLC
Westgate Dental Care
Wheeling Park District
WRB, LLC Management Services
WT Group
Wyatt Nelson
Zing Zang
Zurich North America

COMMITTEE MEMBERS

Carl Arthur
Beth Anne Ausnehmer
Steve Balinski
Linda Ballatine
Maria Bellantuono
Jeff Beyda
Thomas Campone, Sr.
Amy Charlesworth
Julie Clasen
Shawn Collins
Dennis Depcik
Louise Dickey
Jim Earley
Dianna Ehrenfried
Lisa Fields - Hester
Eleanor Falvin
Carol Gabrielsen
Anthony Gattuso
Nuala Gewargis
Alex Green
Dennis Hanson
Vanessa Hastings
Diane Hilgers
Tom Houser
Jim Houser, Jr.
Violeta Howard
Richard Howard
Marge Janovics
Adriane Johnson
Paula Jones
Laurel Katz
Maureen Kerrigan
Thomas Kloepfer
Joanne Kluck
Betsy Kmiecik
Zach Kulig
Jean Lamantia
Mary Larson
Angie Lee
Linda Mancini
Diane Maxwell
Mike McArthy
Brian Meyer
Carmen Molinaro
Jay Morgan
Debbie Nelson
Kathy Nowicki
Terri Oates
Jon Parsons
Tom Perkins
Sandy Ricketts
Ryan Risinger
Mike Rylko
Jonathan Salk
Tim Schaap

Neil Scheufler
Dan Schimmel
Rob Seitz
Brett Simonis
Lisa Siwek
David Speers
Joanne Terrelli
Bob Whitehead
Ann Marie Zgoda

CORPORATE DONORS

ABC Dentistry and Orthodontics
Airgas North Central
Al Larson Prairie Center for the Arts
All American Exterior Solutions
Ambi Foods
APC Financial Group, LTD.
Arlington Heights Park District
Arthur J. Gallagher & Company
Baird & Warner - Julie Murtaugh
Berg Engineering Consultants LTD
Buffalo Grove Bank & Trust
Buffalo Grove Park District
Camosy Construction
Clearbrook
Cloud 9 Confections LLC
Conway Dressing
Dakota-K Auto Repair & Tire Center
Double Good
Drost, Kivlahan, McMahon &
O'Connor, LLC
E Haag & Associates, Inc.
Edward Jones Company
ERG
F.H. Paschen
Fidelity Charitable Donor-Advised
Fund
Fidelity Charitable Gift Fund
Finkel Martwick and Colson P.C.
Focused Eye Care
Get Fresh
Gewalt Hamilton Associates, Inc.
Glenview Park District
Glenview State Bank
Hanover Park Park District
Holland Group, LLC
Horwitz & Associates
Insperity
J & J Ventures Gaming LLC
K Auto Repair
Knights of Columbus Holy Family
Council #4977
Kolbi Pipe Marker Co.
Law Offices of Jeffrey R. Gottlieb, LLC
Legat Architects
Luther Village Spiritual Enrichment
Foundation
Mahogany Builders
Mahoney Preferred Oil
Marc Poulos Painting
Michael J. Bora and Associates
Mitsubishi Electric Automation Inc.
Napleton Automotive Group
New York Life
Northwest Eye Physicians
Oak Brook Park District
Palatine Park District
Perns Back and Neck Clinic

Porte Brown, LLC. Certified Public
Accountants
Portillo's
Prospect Heights Park District
RCH, INC.
Republic Services
Rolling Meadows Park District
Rolling Meadows Park District
Foundation
Rotary Club of River Cities
Rozovics Group
Schaumburg Park District
Scheck & Sires: A Hanger Clinic
Schwartz Wolf & Bernstein LLP
Smolka Law Group
State Farm Insurance
Streamwood Park District
Suburban Stump Removal
Suburban Trim & Glass
Supreme Lobster
Sysco Foods
The Benefity Community Impact Fund
Trinchero Family Estates
Ultimate Distributing Inc.
Unemployment Consultants, Inc.
UPS
Vanguard Charitable
Vicarious Multimedia
Village Bank & Trust
Visualedge Creative Services, Inc.
Warady and Davis
Wold Architects and Engineers
WT Group
Zing Zang
Zurich North America

INDIVIDUAL DONORS

Susan Abrahamson
Beth Adamski
Georgia Akersoppenheim
Michael Alcorta
Gino Alimondi
John Amling
Beverly Amling
Scott Anderson
Linda Andres
Jeanine Andriano
John Anich
Cindy Anich
Glen Antonsen
Anne Applebaum
Carlee Applebaum
Melissa Applebaum
Terry Applebaum
Todd Applebaum
Aaron Appell, DDS
Alicia Arlow
Mary Arvidson
Julianne Arvidson
Chris Athanas
Doug & Beth Anne Ausnehmer
Fred Ausnehmer
Jeffrey Ausnehmer
Jessica Ausnehmer
Meghan Ausnehmer
Thomas Aylmber
Karen Baker
Michael Baker

Steve Baker
Steve Balinski
Linda Ballantine
Becky Banach
Nicholas Banevicius
Mark Barger
Russ Barger
Joseph Barr
Gerry Bartnicke
Ginny Bateman
John Baumgart
Bonnie Beardsley
Kristi Bell
Nancy Bella
Maria Bellantuono
Marjorie Benbow
Bob Benedetto
Sue Benes
Jeffery Benkler
Tom Berberet
Audrey Berg
Brian Berg, Jr.
Joe Berrios
Anne Besterman
Roy Bethge
Michael Bickel
Diane Bieniarz
Johanna Bisek
Carol Blackwood
Suzy Blakey
Ernie Blomquist
Laura Bodnar
Christine Boler
Neal Bond
Dan Bondi
Rita Bonnici-Borsellino
Michael Bora
Angel Borjas
Linda Borton-Sobon
Darren Boundy
Georgette Boyer
Chris Brady
Dane Bragg
Yvette Brancato
Rosie Brancato
Wendy Brandon
Steve Brandt
Maranda Brattin
Bruce Braverman
Nikki Brechlin
Catherine Brennan
Douglas Briles
Whitney Broska
Jimmie Brown
John Brown
David Brown
Ivan Brozan
Chris Buchberger
Andy Buchta
Janice Buiikema
Estella Bunton
Robert Burd
Sabina Burge
Kelly Burke
Jim Burmeister
Kristi Burmeister
Malory Burns
Christina Butcher
Judith Cahill

John Calzaretta
Miriam Campbell
Tony Canonaco
Jeff Carney
Constance Carosielli
Leo Cascio
Greg Cassa
Selena Causey
Gail Cernauske
Ann Marie Cerny
Patricia Chamblee
Amy Charlesworth
Nanci Chesek
Mary Rose Chiovari
Kenneth Christensen
Bob Churchill
Kathryn Ciesla
Jim Cirese
Julie Clasen
Kelli Clevon
Riley Coakley
Catherine Colleran
Sara Colombo
Pat Condon
Dan Conley
Gary Conn
Lourdes Coren
Julie Costigan
Andrew Cox
Ann Crawford
Matthew Crisman
Margaret Crisman
Michael Crisman
Al Crook
Brian Crosby
Monika Crossin
Yorlery Cruz
Michael Cullotta
Glen Curry
Steven Cygan
Antoni Czupryna
Rachel Dahl-Kuzmicz
Glenn Dailey
Sheryl Dailey
Robert Damron
Nancy Dannels
Lynne Danon
Teresa DaPisa
Jessie DaPisa
Megan DaPisa - Keita
John Dattolo
Thor Davidson
Bonnie Davidson
Laurie Davis
Wendy Davis
Steffanie Davis
Dante Davis
Terese Dean
Arik DeCleene
Mary Jane Dee
Michelle Delatour
Floyd DelMuro
Jane Demmerle
Cory Dennison
Brian Dennison
Dennis Depcik
Larry DeReu
Londa DeWald
Gisel Dexter

Ariana Diaz
Louise Dickey
Giancarlo DiFranco
Anna DiFranco
Barbara DiGaudio
Thomas DiGiovanni
Sharon DiMaria
Tony DiVittorio
Kathleen Dodge
Bob Doherty
Tracey Dolsen
Erin Dominiak, MD
Bill Donahue
Craig Donnewald
Bill Downing
Joan Drury
Bob Dubinski
Sue Duchek
Sharon Dumdie
Timothy Dummer
Rachael Edison
Dianna Ehrenfried
Adam Elbadawi
Jennifer Ellingsen
Mary Ellsworth
Melissa Enders
Sara Engelson
Terry Ennes
Theresa Enos
Timothy Enright
Susan Entwistle
Mike Ericksen
Jim Ericksen
Gary Erickson
Debbie Erickson
Pat Erickson
Karen Ericson
Tim Esbenshade
Joan Evans
Louis Fabbri
Bret Fahnstrom
Frances Falcone
Cheryl Fasano
Betty Fath
Carol Faust
John Feduz
Kimberly Feil
Christina Ferraro
Rosemary Ferreri
Lisa Fields-Hester
Marilyn Fischman
Chris Fitzpatrick
Garrett Flora
Jackie Fonorow
Jenn Forker
Mary Fredericks
Laura Frey
Carrie Fullerton
Michael Furneaux
Carol Gabrielsen
Rita Gabrielsen
Anne Gamberdino
Angela Gambino
Katie Gamroth
Kevin Garlock
Jason Gatchell
Anthony Gattuso
Feliza Gauthier
David Gemkow

Dean George
Karen Geraci
Rod Gerlach
Rob Getz
Nuala Gewargis
Robert Giblichman
Mark Gibson
Kristy Giesen
Janet Gilbertson
Ben Gillis
Mena Giovanen
Kelsey Glazik
Harriet Goldberg
Ann Gordon
Ken Gorvett
James Graham
Marianne Greener
Andrea Griffin
George Groetzenbach
Peggy Grunewald
Michael Grunewald
David Gruzewski
Julie Guenther
Barbara Gugliotta
Linda Gulotta
Bill Gunning
Cynthia Hajost
Katie Hajost
Linda Hall
Arlene Halverson
Kathleen Hamill
Ahmed Hanafi
Timothy Hannan
Dennis Hanson
James Happel
Cheryl Harvey
Vanessa Hastings
Temeka Hawkins
Brian Heaphy
Susan Heather
Greg Hecimovich
William Hedrick
Nancy Heggem
Kathy Heilig
Gail Heinke
John Heinz
Michael Heithoff
Brian Henson
Kelly Herforth
Robert Hess
Michelle Hess
Jason Hickman
Thomas Hilgardner
Diane Hilgers
Paul Hinkel
Ron Hirasawa
Gary Holub
Bram Hornstein
Edward Horwitz
Ann Marie Houser
Mary Houser
Jim Houser, Jr.
Richard Howard
Violeta Howard
Rachel Hubsch
Sandra Hudson
Jennifer Hughes
Glenn Hughes
Kathryn Hutchinson

James Ingold
KimInman
Vicki Ivaska
Heather Jackman
Tyffani Jackson
Laura Jagger
David Jagger
Chris Jagger
Jeff Janda
Scott Jannenga
Marge Janovics
Marc Janovics
Nancy Jaris
Derek Jarosz
Karen Jasonowicz
Monica Jaworowski
Kimberly Jockl
Amy Johannsen
Pete Johannsen
Adriane Johnson
Barbara Johnson
Dave Johnson
Joanne Johnson
Victor Johnson
Elger Johnson
Paula Jones
Teiana Jones
Courtney Kaczmarek
Mike Kalitowski
Cindy Kalogeropoulos
Bev Kaman
Gary Kancer
Audra Kaplan
Ryan Kasper
Laurel Katz
Cynthia Kay
Joe Keefe
Kevin Kelly
Mary Ann Kenesey
John Kenesey
John Kent
Mary Kenter
John Kessler
Kenneth Kiepora
Jeanette Kilo - Smith
Barbara King
Ilana Kishony
Bob Kitchen
John Kiwala
Rick Klebs
Randy Klingner
Thomas Kloepfer
Donna Klosowski
Joanne Kluck
Cheri Klumpp
Betsy Kmiecik
Barbara Kobs
Neil Koebernick
Rick Koebernick
Jamie Koeune
Carolyn Kolbaba
Anette Kopycinski
Danielle Koscielak
Bari Kozin
Josh Kozin
Julie Koziol
Stephen Kramer
Sue Kremer
Natalie Kruse

Barbara Kuczma
Leonard Kuczma
Jane Kulakewycz
John Kurpiel
Tony LaFrenere
Lisa Lamantia
Jean Lamantia
Marge Lamb
Jessica Lamb
Steve Lamp
Tim Lancaster
Sharon Lanera
Rachel Lanham
Ashley Lanham
Heidi Lapin
Nikki Larson
Mary Larson
Nina Larson
Marian Layo
Judith Lazar
Jihun Lee
Angie Lee
Stephen Legge
Jim Lennon
Carol Lesh
Ann Libit
Will Lieb
Leah Light
Mark Lindgren
Rhonda Lindner
Laurie Lindstorm
Kevin Lookis
Isabel Lopez-Esbenshade
Sheila Lullo
Jeffrey Lumley
Ruben Luna
Leah Lussem
Geanteary Luster
Steve Magnuson
Donna Malert
Linda Mancini
Jane Manda
Laura Manda
Lisa Maniola
Lois Marchini
Ken Marchini
Daniella Marnos
Lillian Martiny
Rob Martwick
Vita Massarelli
Maria Mastrodonardo
Stephanie Matthias
Donna Matuzak
Diane Maxwell
Dave Mayer
Anthony Mayer
Bernie Mayle
Mike McArthy
Kevin McCarthy
Carol McCarty
Kathy McDaniel
Colleen McGill-Getz
John McGovern
Kevin McGovern
Dan McHugh
Sean McLain
Vanessa McLean
Bryan McMahan
Karen McNulty

Eliza McNulty
Steve McVoy
Bradley Medgyesi
Raul Medina
Kim Meehan
Maria Melesio
Jeanette Mercado
Scott Meservey
Edward Meyer
Joel Meyers
Connie Micek
Tim Millar
Randy Miller
Patricia Miller
Melanie Miller
Carmella Mincy
Patti Mitchell
James Mix
Jacqueline Mlynarczyk
Carmen Molinaro
Fred Molzahn
Stefanie Monaco
Darrell Moon
Rich Moore
William Morales
Diane Morazoni-Marcus
Barbara Morgan
Lucy Morizzo
Josh Morrison
Rich Morton
Patricia Moses
Gary Muller
Susan Muller
Joe Munson
Holly Murawski
Joe Musolino
Michelle Mussman
Curt Myers
Kathleen McNulty
Chuck Nelms
Wyatt Nelson
Debbie Nelson
Staci Nelson
Jean Nelson
Kristi Nelson
Donnie Nesci
Greta Nielsen
Blake Nielsen
Kristine Niemann
Dale Norris
Kathy Nowicki
Terri Oates
Jack O'Brien
Megan O'Brien
Jan O'Brien
Elizabeth O'Brien
Abby O'Brien
Jing O'Brien
Mary O'Brien
Laura O'Connor
Caitlin O'Connor
Tim O'Connor
Brenna Olson
Andrew Olson
Eric Olson
Brigitte Omiatek
Georgianna O'Reilly
Ginny Ormerod
Les Ottenheimer

Ardy Ouellet
Chris Pacanowski
Gregory Paddock
Lindsey Padilla
Pete Panayiotou
Katie Papanicholas
Michele Paradise
Diane Paradise
Michael Paradise
Scott Parker
Nancy Parra
Josh Peick
Tom Perkins
Michelle Pesoli
Tanya Petermann
Michele Petrie
Linda Petrucci
Karen Petrunic
Todd Peyron
Tom Pfeifer
Linda Pfutzenreuter
Ian Pickett
Jeff Piediscalzi
Giovanni Piediscalzi
Larry Piemontese
Gregory Pike
Peter Pisello
Katie Pisello
Tom Pope
Michael Poruba
Julie Postma
Brett Potocki
Sarah Poulos
Kevin Prehn
Michael Priest
Angelica Prisk
John Prus
Jeffrey Quattrochi
Diane Quattrochi
Andre Quattrochi
Maureen Rabe
Jim Rabe
Mark Rademacher
Susan Ramirez
Cathy Rateike
Susie Rateike
Chuck Rawleigh
Geraldyn Reibel
Timothy Reid
Paul Reid
Larry Reiner
Michael Reiss
Stacy Reiss
Jennifer Rezek
Jennifer Rezny
Chris Rezny
Sandy Ricketts
Jamie Riley
Ryan Risinger
Heather Ritter
Mark Rivera
Arleen Roberts
Kalia Robinson
Laura Rock
Becky Rodriguez
Michael Rodriguez
Sylvia Roe
Jennifer Rogers
Dominic Romane

Kevin Romejko
Noel Rosen
Steve Ross
Diane Ross
Mick Ross
Larry Ruud
Mike Rylko
James Rynott
Phil Sabado
Melanie Santostefano
Mario Santostefano
Michael Sapyta
Selma Sarkic
Christine Scaravalle
Kristen Scardina
Tim Schaap
Dawn Schaefer
Jay Schaldecker
Matthew Scheef
Krista Schermerhorn
Neil Scheufler
Ross Schieve
Rob Schiferl
Dan Schimmel
Jean Schlinkmann
Katherine Schmidt
Bob Schmidt
Elaine Schmitt
Brittany Schmitt
Collin Schmitt
Lindsay Schneider
Elizabeth Schroeder
Dave Schultz
Dutch Schultz
Steve Schultz
Mary Schulz
Richard Schumacher
Glenn Scoggins
Donna Seeley
Ralph Seidl
Rob Seitz
Lesia Sengkeo
Steve Sharer
Bill Shine
John Short
The Shuckmeister
Curtis Siegel
Gina Siemplenski
Bernita Simani
Debra Simek
Lisa Siwek
Paul Siwinski
Quintin Sleigh
Nina Slodki
Eric Smith
Stephen Smith
Denny Snyder
JoAnn Snyder
Ed Sobon
Henry Sobotka
Krzysztof Sokol
Nate Solomon
Cynthia Solovy
Brittani Sothen
Keith Soudan
Nanette Sowa
Paul Sowa
Elaine Specha
Ryan Speers

Stephen Sperry
Jenny Spigos
Liza Spinazze
Cathy Splett
Kyle Splett
Cathy Sporleder
Linda Spungen
Lyle Staab
Ryan Star
Ryan Starosto
Matt Stefani
Susan Stein
Fred Stein
Robert Steinberg, DPM
Anna Stella Grana
Nicki Stephens
Sue Stevens
Candice Straczek
Matthew Stroh
Michelle Stuercke
David Stuercke
Kevin Stuercke
Kelly Suchodolski
Ronald Suchodolski
Rebecca Suchodolski
Robert Sujak
Jay Sullivan
Lynn Sutton
Jennifer Sweeney
Linda Sylverne
Glenn Szurgot
Lynne Szydowski
Kelly Tabor
Jason Talanian
Takeshi Tarui
Joan Tatje
Mark Tauber
Nannette Taylor
Juan Tellez
Cole Temple
Joanne Terrelli
John Terrelli
Rosemary Terry
Lynne Terry
Greg Tertell
Roland Thilmany
Liz Thomas
Barbara Thomases
Jim Thomson
Christine Tiltz
Marion Timmins
Flor Tina
Michelle Tisdahl
Cathy Tiske
Barbara Tobias
Steve Tokic
Mark Toljanic
Sue Tomaska
Doris Tomlinson
Armando Torres
Laura Triphahn
Debbie Trueblood
Cathleen Tully
Daniel Tynan
Arnie Uhlig
Gerald Utt
Joan Utvik
Fran Valentino
James Vanaria

Jessica Vasalos
Carolina Velazquez
Terry Versen
Rocky Verzillo
Stacey Villiard
Jack Villiard
Lee Volpe
Paula Voth
Jeanette Vybiral
James Wagner
Teryl Wagner
Ronald Walter
Allison Ward
Geoffrey Watkins
Chad Waynee
Matt Wehby
David Weidenfeld
David Weiner
Martha Weiss
Scott Welch
Jay Welter
Mark Weltzein
Jean Wenzel
Maureen White
Jimmy White
Bob Whitehead
Irene Whittington
Margaret Wichser
Amy Williams
William Wilson
Abigail Wilson
Douglas Wingear
Gail Wisniewski
Jeanette Wohlford
Holly Wood
Christopher Wood, MD
Torstiner Woodbury
Gretchen Wronka
Vita Wukovits
Craig Yamamoto
Janet Yamamoto
Melinda Zambito
Ann Zgoda
Kathy Zicarelli
Mike Zierk
Dave Ziltz
Margaret Zucco
John Zych

INDIVIDUAL PRIZE SPONSORS

Aaron Appell
Melissa Applebaum
Mary Arvidson
Beth Anne Ausnehmer
Steve Balinski
Darren Boundy
Dane Bragg
Traudy Burmeister
Amy Charlesworth
Julie Clasen
Al Crook
Ilya Dauydov
Jason Davis
Dennis Depcik
Louise Dickey

Susan Entwistle
Lisa Fields-Hester
Bob Flaherty
Patricia Flaherty
Cindy Frenzer
Carole Garfinkel
Stacy Gibson
Andrea Griffin
Cynthia Hajost
Linda Hall
Rosemary Heilemann
Michelle Hess
Mackenzie Ireland
Mary Jablonsky
Marge Janovics
Barbara Johnson
Adriane Johnson
Paula Jones
Laurel Katz
Joanne Kluck
Betsy Kmiecik
Jean Lamantia
Sharon Lanera
Isabel Lopez-Esbenshade
Janice Loster
Mike McCarthy
Colleen McGill - Getz
Glenn Meier
Jay Morgan
James Moyna
Debbie Nelson
Wyatt Nelson
Kathy Nowicki
Terri Oates
Kimberly Orlando
Sally Perfect-Wallman
Deenie Pomilia
Ryan Risinger
Brett Robinson
Mike Rylo
Cherie Schanz
Dan Schimmel
Maureen Schuler
Rob Seitz
Brian Selders
Debbie Smith
Cathy Splett
Fred Stein
Sue Stevens
Michelle Stuercke
Joanne Terrelli
Mike Terry
Liz Thomas
Paula Voth
Chad Waynee
Martha Weiss

CORPORATE PRIZE DONORS

A Closer Bond Day Center
A&A Music Academy
Abt Electronics
Adelle's Fine American Fare
Agio Italian Bistro
All American Reclaim
Alley 64
Anuyu Boutique
Arlington Heights Park District

Arlington Lanes
Arlingtones
Armand's Pizzeria
Bahama Breeze
Bead World Inc.
Beer on the Wall
Benihana
Biaggi's Ristorante Italiano
Brackett & Company
BRONCA
Brookfield Zoo
Casey Automotive
CC Additudes
Chicago Bagel & Bialy II
Chicago Bears
Chicago Botanic Garden
Chicago Prime Steakhouse
Chicago Sky
Chicago White Sox
Chicago Wolves
Comet Frozen Custard & Coffee
Congo River Adventure Golf
Connect and Color
Costco
Culver's
Deer Canyon Pottery
Dazzles Salon & Spa
Deerfield Bakery
Deerfield Park District
DePaul Department of Athletics
Destination Fitness
Disney World
Don Stella The Salon
Donkey Inn
d'Vine Wine and Gifts
Egg Harbor Cafe
El Famous Burrito
Elk Grove Park District
Enchanted Castle
Ennes & Associates
Escapeocity
Field Museum
Fitness 19
Float Sixty
FT Cares Foundation
Georgio's Pizza
Giordano's Of Schaumburg
Hampton Inn & Suites
Hampton Inn & Suites by Hilton Chicago - Deer Park
Hanover Park Park District
Harbor Shores on Lake Geneva
Hoffman Estates Park District
Hyatt Regency Schaumburg - Chicago
IMPROV
Indian Trails Library
Interiors 4 U
Jade Financial & Tax Services
Jelly Cafe
Jewelry Mart
JL's Pizza and Sports Bar
Johnny's Kitchen & Tap
JR Dessert Bakery
Juergens Chiropractic
Kendra Scott
Kohl's Children's Museum
Kuma's Corner
Lou Malnati's Pizzeria

Mane Street Hair Salon
 Mary Kay Cosmetics
 Mathnasium of Mount Prospect
 Metropolis Performing Arts Centre
 Michael J. Bora Associates
 Modern Nails
 Mount Prospect Park District
 Navy Pier - Centennial Wheel
 Northwest Speech and Hearing Center,
 Ltd.
 Nothing Bundt Cakes
 Old Crow Smokehouse
 Ontarioville Art Center
 Pandora at Hawthorn, Rosemont,
 Naperville and Oak Brook
 Papa John's
 Picaboo
 Prospect Heights Park District
 PRP Wine International, Inc
 Raging Waves
 Renaissance Schaumburg Convention
 Center Hotel
 Rep's Place
 Robert Campbell Fine Portraiture
 Robyn's Nest Boutique
 Rockford IceHogs
 Rolling Meadows Event Foundation
 Rosati's Restaurant
 Salon Coccole
 Salon MMM...
 Salt Creek Rural Park District
 Sanders Fine Portraits
 Savarino Salon & Spa
 Schaumburg Boomers
 Schaumburg Park District
 Shakou Corporate
 Sierra
 South Barrington Club
 South Barrington Park District
 Superdawg Drive-In Inc.
 Sweet C's Bakery
 Sybaris
 Tap House Grill
 Taqueria Maya
 Target
 TDC Jewelry
 Tito's Vodka
 Tenth & Blake Makers of Fine Beer &
 Cider
 TopGolf Schaumburg
 Trader Joe's
 Valentino Vineyards
 VTech Electronics North America
 Walter E. Smithe
 Weber - Stephen Products, LLC
 Weedman Lawn Care
 William Nelson Art
 Windy City Bulls
 Woodman's
 Wyatt's Dog Company
 Zanies Comedy Nite Club

VOLUNTEERS

Manny Aguilar
 Brianna Assad
 Barb Bassett
 Ron Bernardi

Sandi Campbell
 Amy Charlesworth
 Catherine Colleano
 Cay Collier
 Emily Constantinou
 Ronald Crawford
 Sheila Cruz
 Mary Lou D'Astice
 Dennis Depcik
 Nicole Derrig
 Leslie Forman
 Alex Green
 Ashley Gremпка
 Addison Griffin
 Andrea Griffin
 Rachel Hess
 Christinia Hirsch
 Rachel Hubsch
 Mackenzie Irelan
 Lauren Jevaney
 Adriane Johnson
 Jake Joyce
 Joan Karge
 John Kent
 Georgia Klotz
 Joanne Kluck
 Betsy Kmiecik
 Summer Krones
 Rebecca Lizalde
 Kendra Maher
 Pam McVoy
 Brian Meyer
 Melanie Miller
 Kate Moran
 Donnie Nesci
 Emily Nock
 Kathy Nowicki
 Robert Paddock
 Michele Paradise
 Angelica Prisk
 Marina Riess
 Arleen Roberts
 Lori Schrafel
 Brian Selders
 JoAnn Snyder
 Zofia Sobkiewicz
 Ed Sobon
 Katie Sowa
 Nanette Sowa
 Cathy Sporleder
 Maria Sposito
 Dawn Stangle
 Liz Thomas
 Anita Trzebunia
 Jessica Vasalos
 Dawn Vaslow
 Katrina Wiegand
 Morgan Wirkus

CADDIES

Vito Bellantuono
 Luis Cardenas
 Julio Escobar
 Joey Gasso
 Derek Hartmann
 Dan Hastings
 Jim Houser

Joe Janicki
 Paul Jochim
 Tom Kloepfer
 Scott Murphy
 Donnie Nesci
 Trent Rizzo
 Rob Seitz
 Jeff Simon

MEMORIALS

Dorothy Carponelli
 John Deeter
 Jason Alan Eliasek
 Bud Eliasek
 Michael McNulty
 Jacob Mueller

HONORARIUMS

Anne Besterman
 Carrie Crawford
 Laura Hill
 Emily Meyer
 Lori Pitts
 Sam Ritter
 Margaret Wichser

KEVIN'S CLUB

Russ Barger
 Anthony Gattuso
 Jane Hodgkinson
 Cathy Kendrigan
 Tim Schaap
 Todd Schaap



NWSRA was like finding your best friend at a new school. Supportive, inclusive and walks you through everything. It gave us the confidence to try even more with our son.

- NWSRA Parent

EVENTS

DATE	EVENT
Sun, Feb 27	Hybrid Gold Medal Fashion Show
Wed, May 11	Bridges of Poplar Creek Golf Outing
Thurs, Jun 2	Palatine Hills Golf Classic
Sun, July 17	Top Golf Outing
Wed, Aug 10	Buffalo Grove Golf Classic
Wed, Aug 17	Moretti's/NWSRA Golf Classic
Wed, Aug 31	Women's Golf Outing
Thurs, Sept 15	Arlington Classic Golf Outing
Sun, Oct 9	Ultimate Sunday Funday
Fri, Nov 4	Hybrid Celebrate Ability Gala
Wed, Dec 7	Hybrid Holiday Luncheon
TBD	Terrazzo & Marble Golf Outing

FUNDRAISING CAMPAIGNS

DATE	CAMPAIGN
March 1 - April 1	Flower Power Fundraiser
March 2 - 14	Brackets For Ability
May 1 - 31	Sockathon
July 10 - 31	Fun Pasta Fundraiser
Sept 1 - 30	Steps to Success
Dec 1 - 5	Double Good Popcorn Fundraiser

LIGHTNING ATHLETICS BOOSTER CLUB

DATE	EVENT
Thurs, March 31	Dine to Donate • Noodles & Company
April 4 - 11	NWSRA gear & spirit wear online store
Thurs, May 19	Dine to Donate • MOD Pizza
June 30 - July 4	Volunteer at Frontier Days Festival Dessert Booth
Friday, July 15	Dine to Donate • Panera Bread
August 8 - 15	NWSRA gear & spirit wear online store
October 3 - 10	NWSRA gear & spirit wear online store
Thurs, October 13	Dine to Donate • Portillos



WHAT IS SLSF?

Special Leisure Services Foundation (SLSF), a 501 (c) (3) non-profit foundation, is the fundraising arm of Northwest Special Recreation Association (NWSRA).

MISSION STATEMENT

We exist to support children and adults with disabilities through philanthropy for Northwest Special Recreation Association.

VISION STATEMENT

Maximizing all philanthropic opportunities to build a future that is diverse and inclusive by opening doors through innovative services and community opportunities.

FOUNDATION DOLLARS PROVIDE:

- Transportation
- Programs
- Inclusion
- Scholarships
- Athletics

GET INVOLVED!

To learn more about donating, sponsoring or volunteering, please visit www.slsf.me or contact Anne Kiwala at akiwala@slsf.me or 847/392-2848 ext. 244.



NORTHWEST SPECIAL RECREATION ASSOCIATION
3000 W. Central Rd., Suite 205 • Rolling Meadows, IL 60008
847/392-2848 • 392-2855 TTY • 392-2870 FAX • www.nwsra.org

Do you benefit from receiving this brochure?
If not, please call us at 847/392-2848 to have
your name removed from our mailing list.

