

Title	<b>600 See Gwun Ave, Golf Course, Mt. Prospect</b>	11/09/2022
	by <b>Ben Kutscheid</b> in <b>Member District ADA Project Request</b>	id. 33192905
	1000 W. Central Road Mount Prospect, Illinois 60056 IL United States 847.255.5380 ext 108 bkutscheid@mppd.org	

## Original Submission 11/09/2022

Name	<b>Ben Kutscheid</b>
Job Title	<b>Planner/Landscape Architect</b>
E-mail Address	<b>bkutscheid@mppd.org</b>
Phone Number	<b>8472555380</b>
Park District	<b>Mt. Prospect</b>
Project Location	<b>600 See Gwun Ave, Golf Course, Mt. Prospect</b>
Project Status	<b>Maintenance</b>
Project Type	<b>Communications</b>
Communications- select a Project Category below:	<b>Assisted Listening Systems</b>
Benefits of the Project	<b>Provide people with a mobility impairment access to parts of the Golf Course they may not be able to access. Allow the opportunity to enjoy golf.</b>
Items that will become ADA Compliant	<b>Golf Course and Golf Carts</b>
The project is designed or constructed, or applies human resources, to comply with:	<b>Smart practices in an area not yet addressed by the State of Illinois or a federal standard</b>

Upload Project Related Files, Photos, Videos or Audio

[GPS\\_1\\_1\\_1\\_2023.pdf](#)

[GPS\\_2\\_1\\_1\\_2023.pdf](#)

[GPS\\_3\\_1\\_1\\_2023.pdf](#)

---

Budget Table for ADA Related Expenses

[Budget Table.xlsx](#)

---

ADA Dollars Requested	<b>7131.56</b>
-----------------------	----------------

---

Notes related to requested amount	<b>This request is similar to last years as submitted on 11/1/2021</b>
-----------------------------------	--

---



January 1, 2023

Ms. Tracey Crawford, CTRS, CPRP, Executive Director  
Northwest Special Recreation Association  
3000 Central Rd. - Suite 205  
Rolling Meadows, IL 60008

Re: Accessibility Fund Reimbursement, Golf Course GPS System Lease

Dear Tracey,

The Mount Prospect Park District, Mt. Prospect Golf Club (600 S See Gwun Ave, Mt. Prospect, IL 60056) intends to renew our lease for Club Car Visage GPS Systems on each Golf Cart in our system. We request the following funds be reimbursed to the Mt. Prospect Park District for Accessibility improvements. The funds will be used for a portion of the lease agreement.

The Visage GPS System assists the MPGC in assisting people with a mobility impairment and with emergency communications and it gives the Golf Club the ability to allow golf carts with people with a mobility impairment to access via cart restricted areas. For example on wet days other carts would be limited to paths only, the Visage GPS System would allow a cart with a person with a mobility impairment access to the entire course. We know that regularly about 20% of the users of golf carts have self identified themselves for the need for special GPS access as mobility impaired (Please see attached golf cart use exhibit).

The total cost of the Visage GPS System lease is \$35,657.82, we request reimbursement for 20% of the lease amount or **\$7,131.56**. If you have any questions please let me know, 847.255.5380 Ext 108 or bkutscheid@mppd.org.

Sincerely,

Ben Kutscheid, PLA, ASLA, CPSI  
Planner/Landscape Architect

CC: Jim Jarog, Executive Director, MPPD  
Jessica Vasalos,  
Administrative Manager, NWSRA

**Central Community Center**

1000 W. Central Rd.  
Mount Prospect, IL 60056

847-255-5380

**RecPlex**

420 W. Dempster St.  
Mount Prospect, IL 60056

847-640-1000

**Lions Recreation Center**

411 S. Maple St.  
Mount Prospect, IL 60056

847-632-9333

**Friendship Park Conservatory**

395 W. Algonquin Rd.  
Des Plaines, IL 60018

847-298-3500

**Mt. Prospect Golf Club**

600 See-Gwun Ave.  
Mount Prospect, IL 60056

847-259-4200

**Our Mission:**

To provide exceptional parks and recreation experiences that enrich the quality of life for present and future generations



Map

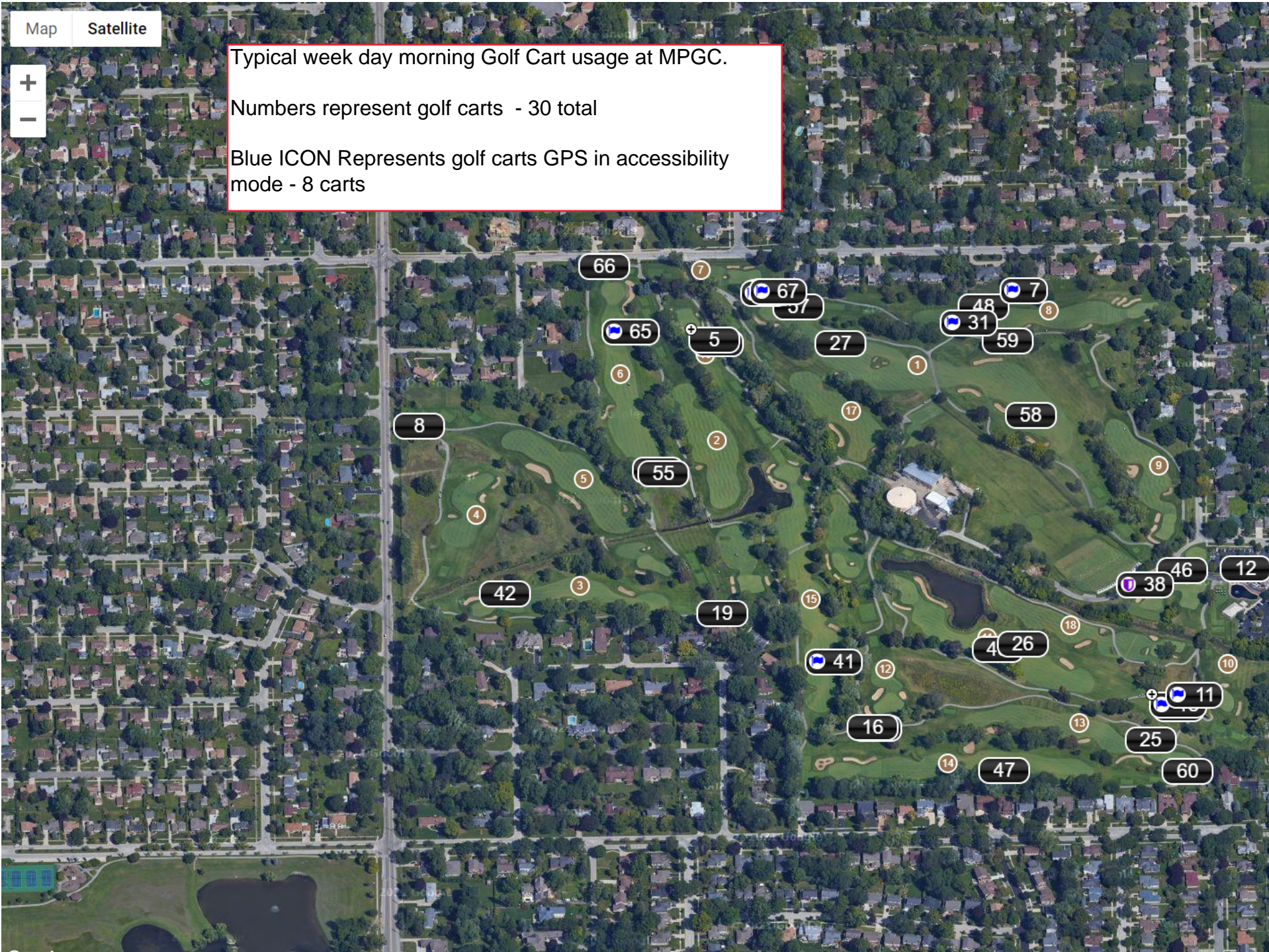
Satellite



Typical week day morning Golf Cart usage at MPGC.

Numbers represent golf carts - 30 total

Blue ICON Represents golf carts GPS in accessibility mode - 8 carts





Project Type (From Above)	Project Category (From Above)	Media File #/Name	Project Category Cost	ADA Portion of Project Cost	% ADA Dollars Requested
maintenance	communication	gps_3_1_1_2023.pdf	35657.82	7131.56	20.00%

#DIV/0!  
 #DIV/0!  
 #DIV/0!  
 #VALUE!  
 #DIV/0!  
 #DIV/0!  
 #DIV/0!  
 #DIV/0!  
 #DIV/0!  
 #DIV/0!  
 #DIV/0!  
 #DIV/0!  
 #DIV/0!  
 #DIV/0!  
 #DIV/0!  
 #DIV/0!  
 #DIV/0!  
 #DIV/0!  
 #DIV/0!  
 #DIV/0!

Total Project Cost	35657.82
Total ADA Portion of Project Cost	7131.56
Total % of ADA Dollars Requested	20.00%