

ANNUAL REPORT 2017

A Year Full of
Accomplishments





Dear Friends,

On behalf of Northwest Special Recreation Associations (NWSRA) and Special Leisure Services Foundation (SLSF), we would like to thank you for your ongoing commitment and support. 2017 was filled with accomplishments, as NWSRA received IAPD/IPRA Distinguished Accreditation, was awarded the highest score for PDRMA Accreditation in the State of Illinois, completed its first year of the 2017-2021 Comprehensive Strategic Plan, opened its new programming space in Hanover Park and so much more.

The importance of collaboration and sharing of resources to enhance programs is evident, as NWSRA and SLSF rely on the outstanding partnerships with individuals, organizations and businesses to open new doors of opportunity. In recognition of the collective efforts it will take to take to open these doors, the theme of the NWSRA 2017-2021 Comprehensive Strategic Plan is: Together. Together, we will achieve and advance opportunities for those individuals who wish to make friends, have fun, be included, go new places, learn new things and celebrate their lives.

Thank you for volunteering, making a financial donation or being a part of the lives of our participants. By supporting SLSF and NWSRA, you have helped a child with Down syndrome to be part of a group through team sports, a teenager with autism to build confidence through acting in a theatrical production, or an adult with a physical disability to exercise independence on a trip of a lifetime.

In 2017, you have created remarkable moments in people's lives. We look forward to your continued partnership as we make an impact on the lives of NWSRA participants in the future, together.

“Together, we will achieve and advance opportunities for those individuals who wish to make friends, have fun, be included, go new places, learn new things and celebrate their lives.”

Diane Hilgers
NWSRA Chairman

Jim Houser, Jr.
SLSF Chairman

Tracey Crawford, CTRS, CPRP
NWSRA Executive Director
SLSF President



Introduction

In 2017 NWSRA and SLSF collectively worked to address the social, physical and cognitive needs of children and adults with disabilities through outstanding recreational opportunities. From the completion of several programming initiatives to the opening of the new programming space in Hanover Park, the staff, Boards, families and supporters worked together to open new doors of opportunity.

Throughout the year, NWSRA provided over 3,500 programs including special events, trips, cultural arts, athletics and inclusion opportunities. Certified full-time staff and hundreds of trained part-time staff and volunteers supported the needs of children and adults with disabilities in a wide variety of programs and services.

Throughout the year, a common theme of collaboration was evident. In the current state of economics in Illinois, NWSRA has acknowledged the need for collaborative efforts that save taxpayer dollars while providing the highest level of service possible. In recognition of this need, NWSRA entitled the 2017-2021 Comprehensive Strategic Plan "Together." NWSRA celebrates the unique partnerships that provide the necessary resources and expertise for individuals with disabilities to recreate to their fullest level of ability within their communities.

Thank you for your continued partnership and support toward enhancing the lives of children and adults with disabilities in the northwest suburbs. As you read the 2017 Annual Report, know that you have made the following possible.

"Luke attended camp at Timber Ridge and the staff were fabulous. I feel so very lucky that your organization offers such great programs for kids. Thank you so very much!!"

- Jamie Cullen, Mother of Luke.

.....

"Thanks to all of you for your ongoing work on behalf of our family members and families. We need you and appreciate how your work makes our family member's life so much healthier and enriched."

- Karen Knafel

.....

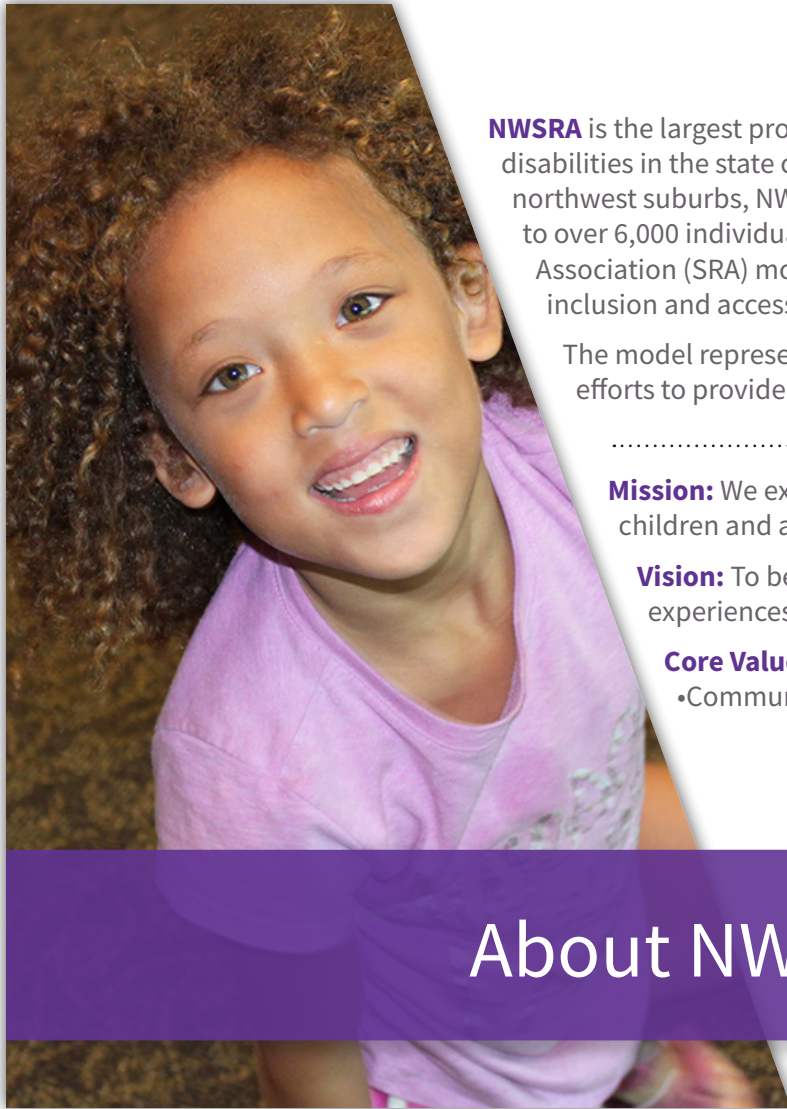
"It is difficult for us to take our child to these kinds of activities. We are glad he is able to participate with NWSRA."

- Parent from Bancroft

.....

"Sincere thank you for spending time with us. Tom and I both feel Andrea, Rachel and Tracey have set the bar high! We appreciate your time and expertise! Your inclusion program is a perfect model for us to use to start our planning."

- Becky Haddins, River Valley SRA



NWSRA is the largest provider of recreational services for children and adults with disabilities in the state of Illinois. As an extension of 17 park districts throughout the northwest suburbs, NWSRA offers public access, year round recreational programming to over 6,000 individuals with disabilities in its service area. The Special Recreation Association (SRA) model is unique to the state of Illinois and leads the nation in inclusion and accessibility for residents with disabilities.

The model represents a consolidation of local Park District, Village and Township efforts to provide recreational services to individuals with disabilities.

Mission: We exist to provide outstanding opportunities through recreation for children and adults with disabilities.

Vision: To be a leading force, creating greater options that enrich the life experiences of the participants, families and communities we serve.

Core Values: Teamwork • Respect • Enthusiasm • Collaboration
•Communication

About NWSRA



SLSF, a 501 (c) (3) non-profit foundation, is the fundraising arm of Northwest Special Recreation Association (NWSRA). NWSRA is a partnership of seventeen park districts in the northwest suburbs of Chicago providing year-round recreational programs and services to children and adults with disabilities. Over 3,500 programs including day camps, cultural arts, athletics, social clubs, special events and more provide participants with outstanding recreational opportunities.

Mission: We exist to support and promote outstanding opportunities through recreation for children and adults with disabilities in cooperation with the Northwest Special Recreation Association.

Funding Focuses: Transportation • Programs • Inclusion • Scholarships • Athletics



About SLSF



NWSRA BOARD OF TRUSTEES

Diane Hilgers - Salt Creek
Chairman

Jay Morgan - South Barrington
Vice Chairman

Rick Hanetho - Arlington Heights

Rita Fletcher - Bartlett

Ryan Risinger - Buffalo Grove

Tom Busby - Elk Grove

Bob O'Brien - Hanover Park

Dean Bostrom - Hoffman Estates

Robert Dowling - Inverness

Dan Malartsik - Mt. Prospect

Michael Clark - Palatine

Christina Ferraro - Prospect Heights

Bret Fahnstrom - River Trails

Amy Charlesworth - Rolling Meadows

Tony LaFrenera - Schaumburg

Dennis Stein - Streamwood

Jan Buchs - Wheeling



SLSF BOARD OF DIRECTORS

Jim Houser, Jr. - *Chairman*

Kathy Nowicki - *Vice Chairman*

Amy Charlesworth - *Secretary &
Organizational Treasurer*

Tracey Crawford - *President*

Wendy Aguilera - Blanchette

Carl Arthur

Thomas Campone

Vicki Carney

Michael Clark

Al Crook

Anthony Gattuso

Dennis Hanson

Tony LaFrenera

Terri Oates

Tom Perkins

Brian Rubin

Jonathan Salk

Dennis Stein

Major Accomplishments



What We Accomplished Together

Leisure Education Growth

The Leisure Education Program is a cooperative program, hosted in conjunction with school districts within NWSRA's member Park District communities. The program runs throughout the school year, providing access for students to learn about various types of recreation and leisure activities. NWSRA's Leisure Education Program grew from 156 classrooms with more than 1,000 students within the 2016-2017 school year to 167 classroom with more than 1,200 students in 2017-2018 school year. The program offers over 35 different activities that take part at locations throughout the northwest suburbs.

True Regional Programming

With the opening of Hanover Park Space, NWSRA added duplicate programming to take place in both the Rolling Meadows and Hanover Park locations including:

- 1) Autism Movement Therapy
- 2) Private music instruction
- 3) Adult Fitness Program - spin class, core strength and flexibility
- 4) Saturday Clubhouses and Saturday Afternoon Hangout
- 5) Early Childhood programs
- 6) Clubs and Special Events
- 7) PURSUIT Adult Day Program

Camps

Through the Comprehensive Strategic Planning Process, NWSRA identified that the early childhood population was in need of more access to programming. To address this need, NWSRA expanded its Extended School Year (ESY) programming in collaboration with School District 54 to serve younger students who were entering kindergarten through 1st grade and attend the ESY with District 54.

NWSRA has collaborated with School District 54 for approximately 15 years to offer a day camp to children in 1st to 7th grade. Of the 13 children registered, 11 of them had not previously participated in NWSRA programs, showing the power of collaboration.

Healthy Minds Healthy Bodies Growth

The Healthy Minds Healthy Bodies program provides Veterans who have an illness or have been permanently injured with a one-year fitness membership at a participating Park District, up to 15 free personal training sessions and monthly activities to socialize with fellow Veterans and family members. In 2017, the number of Veterans participating doubled, and NWSRA was proud to add the Streamwood Park District as a participating member of the program!

Learn more about the Healthy Minds Healthy Bodies program at www.nwsra.org/hmhb



Sensory Friendly Holiday Concert

NWSRA hosted its first ever Sensory Friendly Holiday Concert in collaboration with Harper College in December. The Harper College Symphony Orchestra performed and shared their love of music to everyone in attendance. One parent quoted, “We LOVED it and can’t wait until next year. A new family tradition for us to get into the holiday spirit. My son smiled and bobbed to the music the whole concert.” NWSRA was proud to provide this unique opportunity through collaboration and enjoyed seeing the smiles on the faces of attendees.

NWSRA Behavior Intervention Team

NWSRA is committed to making safety an integral part of an enjoyable recreation and leisure experience for all participants. In order to ensure safety and communication between all involved in each recreational experience, NWSRA implemented the Behavior Intervention Team.

The team is comprised of full time Certified Therapeutic Recreation Specialists & Certified Park and Recreation Professionals who train throughout the year on best practices to ensure that proper individualized attention is provided to meet the needs of each participant.

The Behavior Intervention Team works as a resource for all full and part time staff to identify and address challenging behaviors throughout the year, highlighting the continuous implementation of the NWSRA Core Values.



Numbers You Should Know - Inclusion



2,298
NUMBER OF
REGISTRATIONS



9.01%
PARTICIPANT
INCREASE
COMPARED TO 2016

646
INDIVIDUALS
SERVED

THE YOUNGEST
INCLUSION
PARTICIPANT

 **2½ Y.O.**

NWSRA and its member park districts believe that all individuals should be provided with leisure opportunities that allow for performance at their highest level of ability. Although many people achieve this through participation in an NWSRA program, others may have greater success in a park district activity. Through NWSRA inclusion services, resources and assistance are provided to ensure that individuals with disabilities have access to recreational programs that will help them to achieve their personal goals.



PURSUIT Expansion/ STAR Academy

As a collaborative program between Clearbrook and NWSRA, the PURSUIT Adult Day Program provides continued growth through enriching recreational activities. In 2017, PURSUIT was introduced to the Hanover Park Community Center with much fanfare from the community, and currently has a waiting list that highlights the success of program while making the need for additional services evident.

The STAR Academy After Care Program is also a collaborative program between Clearbrook and NWSRA, and provides year round after school care for children and teens with disabilities. The program provides each individual with activities designed to meet their personal goals. The STAR Academy After Care opened in Rolling Meadows, and looks to expand in the future.

Through the expansion of programming space in collaboration with partner Park Districts, current and future NWSRA sites will provide a diverse range of recreational options. Certified staff will provide the tools and leadership for individuals with disabilities to achieve their personal goals, including social skills, community integration, health & wellness, sensory integration and more.

“The STAR Academy provides an additional support in providing Kaylany’s safe and fun activities every day. All the activities are planned to work on the different challenges Kaylany faces.”
- Euran Williams, father of Kaylany.



In 2017, NWSRA opened the Snoezelen Sensory Room. Through technology and innovative design, the Snoezelen room is a controlled multi-sensory environment that helps to create a therapeutic alliance between the client and the Certified Therapeutic Recreations Specialist (CTRS) as well as a safe place to develop life skills.

A multisensory environment (MSE) is used to provide a wide range of multi-sensory stimulation for individuals with a variety of disabilities, disorders and conditions including, but not limited to anxiety, autism, dementia, intellectual disabilities, brain injury, post-traumatic stress disorder, depression, behavioral disabilities and chronic pain. Building and utilizing an MSE makes a world of difference to the individuals that NWSRA serves.

Snoezelen Sensory Therapy is a non-directive therapy that is controlled by the client not by the therapist. Therapy sessions are individualized to each client's sensory needs. By allowing an individual to participate at their own free will in a safe environment, the CTRS helps maximize the individual's potential to focus, feel in control, make choices and reduce pain and anxiety both mentally and physically.

Through the NWSRA Sensory Therapy, certified staff provide an innovative approach toward providing clients the tools to enhance and unlock their own abilities. It provides families with an option for therapy that goes above and beyond in customizing the experience to meet the needs of the client. NWSRA staff have spoken on local and statewide levels about Snoezelen Sensory Therapy to promote its therapeutic benefits, and demand has grown exponentially.

"The Sensory Room is absolutely amazing for me as a parent. I see some great changes! Now I see that when he wants something, he is able to ask for it."
- Aneta, mother of Jas



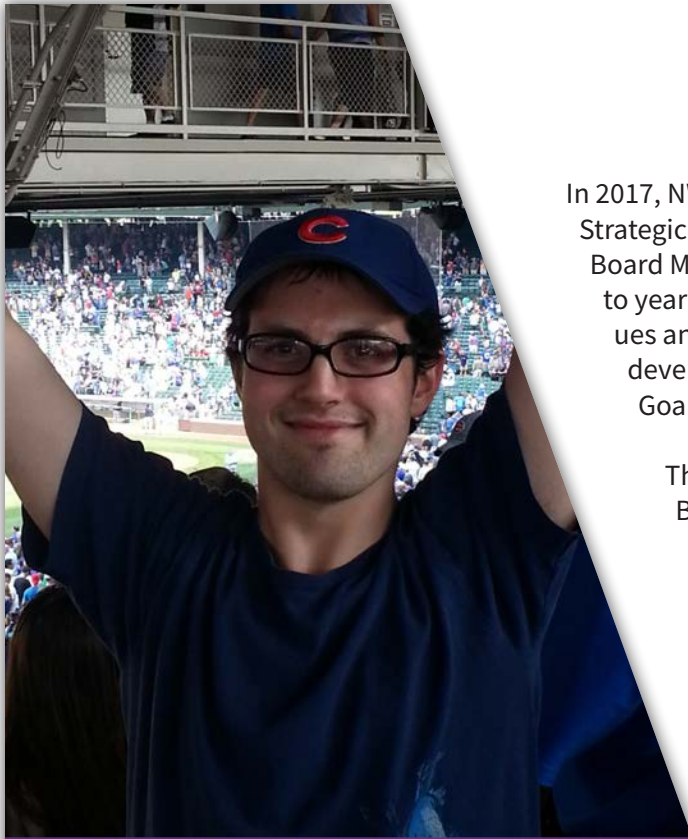
Snoezelen Sensory Room



NWSRA Opening of Hanover Park

NWSRA showcased its new programming space at the Hanover Park Park District Community Center at its Open House and Ribbon Cutting in July 2017. Over 100 attendees toured the programming space and new accessible ramp paid for by SLSF, discovered fundraising efforts for the proposed Snoezelen Room, and heard from a variety of speakers highlighting the efforts to create this new recreational environment. Special thank you to the speakers for the evening: Hanover Park Park District Executive Director Rick Wulbecker, NWSRA Board Chair and Schaumburg Park District Executive Director Tony LaFrenere, SLSF Board Chair Carl Arthur, and Carl LaMell from

Clearbrook. NWSRA was joined by State Representative Michelle Mussman, State Senator Laura Murphy, and State Senator Tom Cullerton, who continue to support outstanding opportunities through recreation for children and adults with disabilities. Through this new program space, children and adults with disabilities will make friends, have fun, go new places, learn new things, be included and celebrate their lives.



In 2017, NWSRA completed its first year of the 2017-2021 Comprehensive Strategic Plan. Through its development process, a variety of NWSRA Staff, Board Members and stakeholders worked collaboratively to develop a year to year plan for the Association. This plan set the Mission, Vision, Core Values and Pillars of the Association and from there, Focuses and Goals were developed. Annually, staff determine Action Items to meet each identified Goal.

The commitment to long-range planning is a priority of the NWSRA Board and Administrative team, as it enables stakeholders to share a common vision while implementing necessary change.

In 2017, NWSRA was proud to report that through collaboration and continued engagement with stakeholders, staff were able to accomplish the goals set forth for the first year.

View the complete Strategic Plan at: www.nwsra.org

2017-2021 NWSRA Comprehensive Strategic Plan

NWSRA recognizes the need for collaboration in order to enhance access to resources and build stronger programs. We thank the many organizations for working with NWSRA cooperatively on various programs and events, including:

- **Amita Health**
- **Alexian Brother Autism Spectrum & Disorders Resource Center**
- **Clearbrook - PURSUIT Adult Day Program and STAR Academy**
- **Healthy Minds Healthy Bodies Program**
- **Revelation Golf - Clinics for Veterans and Paralympics Sports Club**
- **Sandburg Jr. High - Career Day**
- **School District 15 and 54 - Day Camp**
- **School District 21 and 54 - Outreach**



Cooperative Relationships

Financial Highlights

2016 Statement of Activities

Operating Revenue	NWSRA	SLSF	Combined
Member Contributions	\$ 4,197,811	-	\$ 4,197,811
Program Services	\$ 632,085	-	\$632,085
Fundraising/Contributions	-	\$ 726,380	\$ 726,380
Grants	\$ 341,755	\$ 104,816	\$ 446,571
Miscellaneous	-	\$ 70,545	\$ 70,545
Total Revenue	\$ 5,171,651	\$ 901,741	\$ 6,073,392

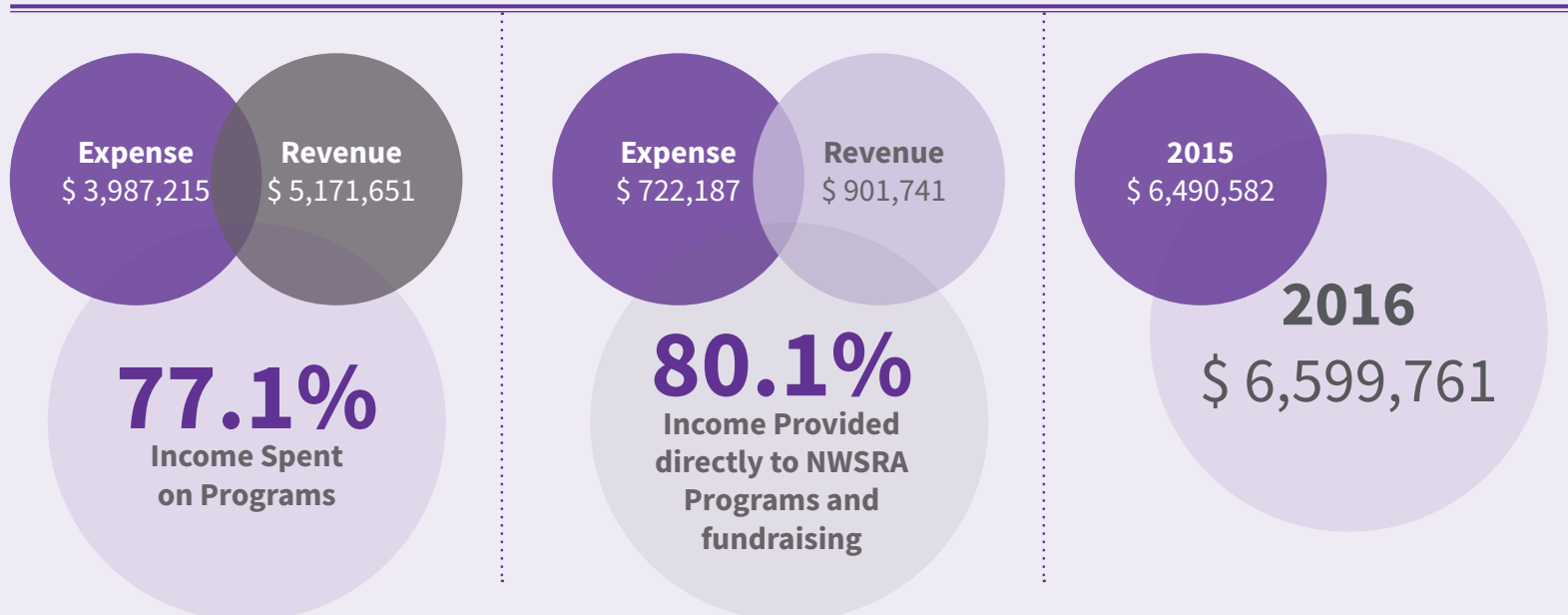
Expenses	NWSRA	SLSF	Combined
Programs	\$ 3,987,215	\$ 722,187	\$ 4,709,402
Unrealized Loss on Investment	-	-	-
Administration	\$ 726,121	\$ 132,988	\$ 859,109
Total Expenses	\$ 4,713,336	\$ 855,175	\$ 5,568,511

Net	NWSRA	SLSF	Combined
Non Operating Income	\$ 22,603	-	\$22,603
Revenue	\$ 480,918	\$ 46,566	\$ 527,484

NWSRA Income Spent on Programs in 2016

SLSF Income Provided to NWSRA programs and fundraising efforts in 2016

Net Position Up 1.68%

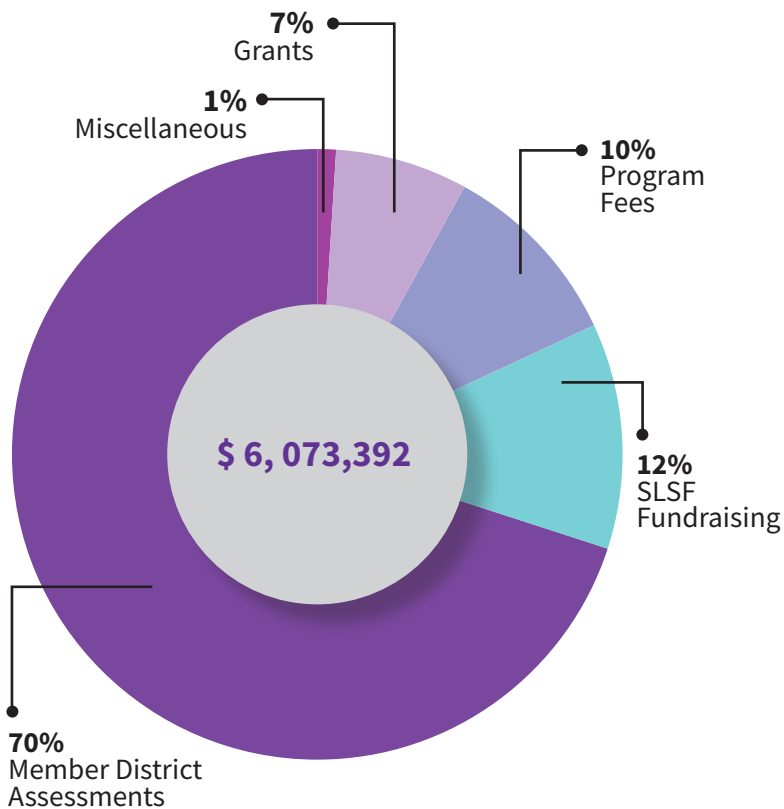


Statement of Net Position

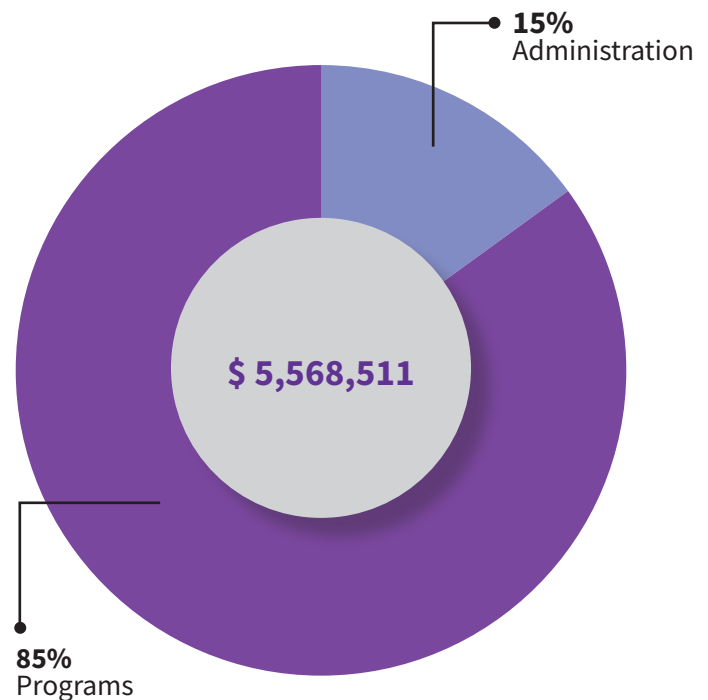
(Year End December 31, 2016)

Assets	NWSRA	SLSF	Combined
Cash	\$ 4,782,357	\$ 239,778	\$ 5,022,135
Investments	-	\$ 1,197,098	\$ 1,197,098
Accounts/Pledges Receivables	\$ 1,472	-	\$ 1,472
Prepaid Expenses	\$ 21,966	\$ 1,500	\$ 23,466
Capital Assets	\$ 1,459,632	-	\$ 1,459,632
IMRF	\$ 880,976	-	\$ 880,976
Liabilities	(\$ 1,969,518)	(\$ 15,500)	(\$ 1,985,018)
Net Position	\$ 5,176,885	\$ 1,422,876	\$ 6,599,761

Organizational Revenue By Category



Organizational Expense By Category



SLSF gratefully thanks the following supporters for their donations throughout 2017

GRANTORS

Allstate Foundation
Elk Grove Township
ITW Foundation
MB Chatitable Foundation
Palatine Jaycees
Palatine Township
Rotary Club Of Elk Grove Village
Rotary Club Of Palatine Foundation
Rotary Club Of Rolling Meadows
Schneider Electric North America Foundation
The Foundation of the Rotary Club of Buffalo Grove
Wheaton Franciscan Sisters
Women's Club Of Inverness
Zurich - North America

CIVIC GROUPS

Alexian Brothers Behavioral Health Hospital
American Legion Baseball, Mt Prospect Post 525
Arboretum Club Golf Course
Arlington Heights Chamber of Commerce
Arlington Heights Park District
Arlington Heights Police Department
Arlington Lakes Golf Course
Arlington Lanes
Autumn Leaves of Arlington Heights
Autumn Leaves of South Barrington
Bartlett Park District
Brunswick Zone-Mount Prospect
Buffalo Grove Fire Department
Buffalo Grove Park District
Carl Sandburg Jr. High
Catholic Charities of Archdiocese of Chicago
Chevy Chase Country Club
Clearbrook
Einstein Elementary School
Elk Grove Bowl
Elk Grove Park District
Feed My Starving Children
Frontier Days, Inc.
Grace Lutheran Church
Habitat for Humanity ReStore
Hanover Park Park District
Hanover Park Senior Center
Harvest Bible Chapel
Hoffman Estates Park District
Inverness Park District
John Conyers Learning Academy
Journeys/PADS
Kimball Hill School
Kirk School
Kiwanis Club of Palatine
Kiwanis Club of Rolling Meadows
Knights of Columbus #4977

Meadows Christian Fellowship
Miner School
Mitsubishi VISION Committee
Mount Prospect Golf Club
Mount Prospect Park District
Northwest Community Healthcare
NWSRA Lightning Booster Club
Palatine Hills Golf Course
Palatine Park District
Palatine Women's Club
Poplar Creek Bowl
Prospect Heights Park District
River Trails Park District
Rolling Meadows Chamber of Commerce
Rolling Meadows High School Orchesis
Rolling Meadows Park District
Ronald McDonald House
Rotary Club of Arlington Heights
Rotary Club of Buffalo Grove
Rotary Club of Rolling Meadows
Rotary Club of Schaumburg/Hoffman Estates
Salt Creek Park District
Schaumburg Jaycees
Schaumburg Library
Schaumburg Park District
Schaumburg Professional Firefighters
South Barrington Park District
State Representative Fred Crespo
State Representative Mike Fortner
State Representative David Harris
State Representative David McSweeney
State Representative Thomas Morrison
State Representative Marty Moylan
State Representative Laura Murphy
State Representative Michelle Mussman
State Representative Elaine Nekritz
State Representative Christine Winger
State Representative Carol Sente
State Senator Tom Cullerton
State Senator Terry Link
State Senator Dan McConchie
State Senator Julie Morrison
State Senator Michael Noland
State Senator Jim Oberweis
State Senator Tom Rooney
US Representative Peter Roskam
U.S Representative Janice Schakowski
U.S Senator Tammy Duckworth
U.S Senator Dick Durbin
Streamwood Bowl
Streamwood Park District
Sunrise Lake Outdoor Education Center
The Meadows Club
Thrown Elements Pottery
Timber Ridge School
Township High School District 214
Trinity Luthern Church
Wheeling Park District
Willow Creek Community Church
Women's Club Of Inverness

EVENT SPONSORS

Absolut Vodka
ACT Appraisal, Inc.
Joe Adolifino
Ala Carte Entertainment
Allen Gabe Law, LLC
Allstate - Thomason Insurance Agency
American Philanthropic
Americor Electronics, Ltd.
Amici Terrazzo, LLC
Lori Anderson
The Anderson Family
Anthony Vincent Tile, Inc.
Antolini Luigi & C SPA
Aaron Appell
Arlington Heights Ford
Arlington Heights Park District
Arlington Heights School District 25
Arlington Lakes Golf Club
Arlington Orthodontics, P.C.
Arlington Pipe & Cigar Lounge
Carl & Grace Arthur
AT&T
AXA Advisors, Jim Bertucci
Benjamin F. Edwards & Co., Dave Hanson
Andrew Bennett
Berkshire Hathaway Home Services, Sue Gould
Ernie Blomquist
BMO Harris
Linda Borton & Ed Sobon
Darren Boundy
Dane Bragg
Brian Hicks, DDS
Buffalo Grove Bank & Trust
Buffalo Grove Fire Department
Buffalo Grove Park District
Cactus Canyon Quarries, Inc.
CallOne
Thomas & Silvia Campone
Vicki Carney & James Bunegar
CDE Collision Center
Chandler's Chophouse & Banquets, Inc.
Chiro-One Wellness Centers
chloe & isabel jewelry, Jessica Rush
Coldwell Banker, David Jaffee
Colorado Design Inc. Tile and Terrazzo
Complete Building Maintenance
The Continental Restaurant
Conway Dressing
Cornerstone National Bank & Trust Co.
Corradini Corporation
Ron Crawford
The Crawford Family
Culver's, Buffalo Grove
Steve Daday
Dahme Mechanical Industries
Daily Herald
Dakota-K Auto Repair & Tire Center
David Allen Company

Dengeo's on Dundee
Dressbarn, Hoffman Estates
Drost, Kivlahan, McMahon &
O'Connor, LLC
Sue Duchek
Ecolab
Edwards Jones Company, Denny Snyder
EPIC Sign
Fabbrini's Flowers
Flood Brothers
Forbici Salon-Spa
Formally Modern Tuxedo, Schaumburg
Gar and Leslie Forman
Friends of Beth Anne & Doug Ausnehmer
Get Fresh Produce
Gewalt Hamilton Associates, Inc.
Gilco Scaffolding Company
Glueckert Funeral Home, Ltd.
Fred and Bunny Hall
Hanover Park Park District
Dennis Hanson
The Happel Family
Al & Melody Helms
Highland Baking Company
Jamesons
JC Penney's, Woodfield
John Jawor
Kafka Granite
John Kim
Klein, Daday, Aretos & O'Donoghue, LLC
Kloepfer Insurance Services, Inc.
Kloss Distributing
Kolbi Pipe Marker Co.
Richard & Joanne Kluck
Larsen Packaging Products, Inc.
Lavelle Law
Law Offices of Jeffrey R. Gottlieb, LLC
Lexus of Arlington
Kim Lichtenberger
Marc Poulos Painting
Massucci, Blomquist, Anderson
and Dunn, Law, P.C.
The Maxwell Family
MB Financial
McDonald's, Palatine
Clay Menconi
Steve Menconi
Menconi Terrazzo
Midori Banquets
Missouri Terrazzo
Mitsubishi Electric Automation Inc.
- VISION COMMITTEE
Carmen Molinaro
Mount Prospect Park District
Mulcahy, Pauritsch, Salvador & Co., Ltd.
Arlene Mulder
Steve Murray
Napleton's Automotive Group
Larry & Kristine Niemann
Northgate Management Team
Northwest Community Healthcare
Northwest Eye Physicians
Northwest Speech and
Hearing Center, Ltd.
Old Orchard Country Club
Palatine Hills Golf Course
Pepsi Americas

Picket Fence Realty
Populus XP, LLC
POS Remarketing
Preferred Oil
Preservation & Protection Systems, Inc.
Proforma Customized Graphics &
Promotions
Prospect Heights Park District
RE/MAX, Deenie Pomilia
Red Classic
Red River Transportation, Inc.
Republic Services
River Trails Park District
Rockin' Jump
Rolling Meadows Park District
Rotary Club of Palatine
Rubin Law
Rumchata
Schaumburg Golf Club
Schaumburg Park District
Schwartz, Wolf & Bernstein, LLP
Quintin Sleigh
State Farm Insurance, Christine Altieri
Mary Stitt
Sunset Foods
Supreme Lobster & Seafood
Sustainable Construction Systems
Svedka Vodka
Sysco Foods
Teleflex
Terrazzo & Concrete Equipment
Terrazzo & Marble Supply Companies
Terrazzo Masters
The Law Firm of Neil S. Zweiban
Trimark Marlinn Restaurant Supply
Twist Office Products
The Ubert Family
Unemployment Consultants, Inc.
Upper Canada
Van Gogh Vodka
Vicarious Productions
Village Bank & Trust
Waltz, Palmer, Dawson, LLC
Weber - Stephen Products, LLC
Dick Wilson
Window Works
Wintrust Mortgage
WRBLLC, Ltd.
W-T Engineering
Judy Yublosky
Zurich - North America

COMMITTEE MEMBERS

Lori Anderson
Christina Anderson-Heller
Carl Arthur
Beth Anne Ausnehmer
Steve Balinski
James Bertucci
Carol Blackwood
Marcin Bos
Bob Calzaretta
John Calzaretta
Amy Charlesworth
Jake Chung
Julie Clasen

Emily Collard
Shawn Collins
Lynn Crawford
Ronald Crawford
Dennis Depcik
Louise Dickey
Anna Dzadz
Jim Earley
Dianna Ehrenfried
Terry Ennes
Fran Falcone
Carol Gabrielsen
Anthony Gattuso
Nuala Gewargis
Gerald Grimaldi
Trey Higgins
Dan Hotchkin
Jim Houser
Jim Houser, Jr.
Judy Houser
Tom Houser
David Jaffe
Marge Janovics
Adriane Johnson
Paula Jones
Bev Kaman
Laurel Katz
Maureen Kerrigan
Thomas Kloepfer
Joanne Kluck
Karina Kovar
Tony LaFrener
Jean Lamantia
Jennifer LaRocco
Mary Larson
Agnes Laton
Kim Lichtenberger
Linda Mancini
Yash Maroli
Diane Maxwell
Steve McVoy, Sr.
Eddie Mendez
Brian Meyer
Carmen Molinaro
Terri Oates
Shannon O'Connor
Jon Parsons
Marc Poulos
Sandy Ricketts
Ryan Risinger
Mike Rylko
Nick Sawyer
Tim Schaap
Neil Scheufler
Rob Schiferl
Dan Schimmel
Rob Seitz
Lisa Siwak
Norbert Skibicki
Joanne Terrelli
John Terrelli
Jim Thomson
Jen Ubert
Bob Whitehead
Dick Wilson
Ann Zgoda

CORPORATE DONORS

375 Park Avenue Spirits
AAA Insurance
ACT Appraisal, Inc.
AJU Consulting, Inc.
Ala Carte Entertainment
Alexian Brothers Behavioral
Health Hospital
All American Exterior Solutions
All Clean Fun, Inc.
Allen Gabe Law LLC
Allstate
All Ways Catering
American Philanthropic
American Wilbert Vault
Americor Electronics, Ltd.
Amici Terrazzo, LLC
Anthony Vincent Tile, Inc.
APC Financial Group
Appell Dental Group
Area 7 South Cook-Will Special Olympics
Arlington Heights Ford
Arlington Heights Park District
Arlington Heights Police Department
Arlington Orthodontics, P.C.
Arlington Pipe and Cigar Lounge
Arlington Heights School District 25
AT&T
AXA Advisors - Jim Bertucci
Back & Neck Pain Center
Bartlett Park District
Bella Brew Coffee & Beverage Co.
Benefax
Benjamin F. Edwards & Co. - Dave Hanson
Berkshire Hathaway Home Services
BMO Harris Bank
Brian Properties
Buffalo Grove Bank & Trust
Buffalo Grove Police Department
Cactus Canyon Quarries, Inc.
CallOne
Capital One
CDE Collision Center
Chandler's Chophouse & Banquets, Inc.
Citywide Building Maintenance
Clearbrook
Coldwell Banker - David Jaffe
Connect to Community
Constellation Brands
Conway Dressings
Cornerstone National Bank & Trust Co.
Corporate Concepts
Corradini Corporation
Cruise Planners
Culver's
Dahme Mechanical Industries, Inc.
Dakota-K Auto Repair & Tire Center
Delicate Designs
Deloitte & Touche LLP
Dengeos On Dundee, Inc.
Doherty Associates
Drost, Kivlahan, McMahon &
O'Connor, LLC
Ecolab
Edward Jones Company
Elk Grove Park District

Elk Grove Village Bank & Trust
First American Bank
First Health Associates
Flood Bros Disposal Co.
Food Marketing
Four Brothers Holding Inc.
Get Fresh Produce
Gewalt Hamilton Associates, Inc.
Gilco Scaffolding Company
Glenview State Bank
GLM Financial
Glueckert Funeral Home, Ltd.
Greco and Sons
Hair By Carole & Company
Hanover Park Park District
Highland Baking Company
HSBC - North America
Jagermeister
James M. Moyna, CPA
Johnnies Landscaping
JSM Associates
Kafka Granite, LLC
Keyword First
Kildeer Police Department
Kiwanis Club Of Rolling Meadows
Klein, Daday, Aretos & O'Donoghue, LLC
Kloepfer Insurance Services, Inc.
Kloss Distributing
Knutsen Consulting, LLC
Kolbi Pipe Marker Co.
Land Partners, LLC
Larsen Packaging Products, Inc.
Lavelle Law, Ltd.
Law Office of Robert P. Harris
Law Offices of Jeffrey R. Gottlieb, LLC
Legat Architects
Lexus of Arlington
Lincolnwood Parks Department
Lutheran Life Communities
MAH Machine Company
Marc Poulos Painting
Massucci, Blomquist, Anderson and
Dunn, Law, P.C.
MB Financial
McDonald's
Medulla LLC Wellness Careers
Metro Federal Credit Union
Metropolis Performing Arts Center
Missouri Terrazzo
Mitsubishi Electric America Foundation
Mitsubishi Electric Automation Inc.
-VISION COMMITTEE
Mount Prospect Park District
Mulcahy Pauritsch Salvador & Co., Ltd.
Nakfoor Orthodontics
Natural Stone
Northwest Community Healthcare
Northwest Eye Physicians
Northwest Speech and
Hearing Center, Ltd.
Oliva Group, LLC
Open Air Wireless
Palatine Park District
Palatine Park Foundation
Palatine Women's Club
Paul Ries & Sons
Pepsi Americas

Pernod Ricard
Picket Fence Realty
Pinderski & Pinderski
Piranha Promotions, Inc.
Plum Grove Dental Assoc., Ltd.
Pomilia Properties, Inc.
Populus XP, LLC
POS Remarketing Group, Inc.
Prairie Center for the Arts
Preservation & Protection Systems, Inc.
Priority Care
Proforma Customized Graphics &
Promotions
Prospect Heights Park District
RE/MAX
Red River Transportation, Inc.
Republic Services
Richard L. Kusunose DPM
River Trails Park District
Robbins Schwartz
Rockin' Jump
Rolling Meadows Park District
Rosemont Exposition Services Inc.
Rotary Club of Arlington Heights
Rotary Club of Palatine Foundation
Rotary Club of Rolling Meadows
Rotary Club of Schaumburg / Hoffman Estates
RSM US LLP
Rubin Law
Rumchata
Salt Creek Rural Park District
Schaumburg Committee For The Disabled
Schaumburg Park District
Schneider Electric
School District 25
Schwartz Wolf & Bernstein LLP
Second System Inc.
South Barrington Garden Club
Speer Financial, Inc.
State Farm Insurance
Suburban Stump Removal
Suburban Trim & Glass
Sunset Foods
Supreme Lobster & Seafood
Sustainable Construction Systems
Sysco Foods
T2 Automotive, L.L.C.
Teleflex
Terrazzo & Concrete Equipment
Terrazzo & Marble Supply Companies
Terrazzo Masters
The Continental Restaurant
The Danon Family Charitable Fund
The Foundation of the Rotary Club of
Buffalo Grove
The Law Firm of Neil S. Zweiban, Chartered
Thomson Insurance Agency Inc.
Tony's Fresh Market
Town & Country Distributors
Trimark Marlinn Restaurant Supply
Trincherio Family Estates
Twist Office Products
Unemployment Consultants, Inc.
Upper Canada Stone
UPS
US Foods
Vernon Hills Park District

Vicarious Productions Inc.
Village Bank & Trust
Visualedge Creative Services, Inc.
Waltz, Palmer, Dawson, LLC
Waste Management
Weber - Stephen Products, LLC
Wheeling Park District
Window Works
Windy City Bulls
W-T Engineering
Zurich - North America

INDIVIDUAL DONORS

Mike Abrahamson
Martin Algner
Arielle Allen
Eric Alley
John Amling
Beverly Amling
Lori Anderson
James Anderson
Cyndi Anderson
Dave Andrejek
Linda Andres
Mary Lou Anton
Linda Antonaci
Aaron Appell
Lisa Arthur
Jonathan & Katrina Arthur
Doug & Beth Anne Ausnehmer
Jeff Ausnehmer
Elisabeth Azzarello
Sallyann Bacchiere
Stephen Baker
Robb Balfour
Steve Balinski
Bill Balling
Denis Balon
Muriel Banach
Russ Barger
Antonina Barkauskas
Greg Barr
Gerry Bartnicke
Jim Bateman
Andy Batterton
Chuck Baum
Bonnie Beardsley
Adrienne Beauchamp
Julie Beesley
Kristi Bell
Marlene Bellamy
Maria Bellantuono
Marjorie Benbow
Bob Benedetto
Sue Benes
Jeffrey Benkler
Andrew Bennett
Greg Benson
Barbara Benson
Tom Berberet
David Berkow
Tom Bernero
Lenore Bessemer
Steve Biddle
Paul & Johanna Bisek
Carol Blackwood

Suzy Blakely
Ernie Blomquist
Liz Bolash
Linda Borton-Sobon
Marcin Bos
Jean Bott
Les Boughner
Darren Boundy
Michael Boyle
Dane Bragg
Bruce Braverman
Trisha Breitlow
Mary Bremner
Barbara Brezinski
Candy Brian
Mari Anne Brickwood
Laurie Brierton
Mike Brink
Catherine Brodnan
Chris Buchberger
Jan Buchs
Bill Buchta
Dona Bugielski
John Bui
Sabina Burge
Brooke Burgoni
Joseph Burlini
Jim & Traudy Burmeister
Justin Burmeister
Jim Burmeister
Diana Burt
Tom Busby
Maria Bustamante
Judith Cahill
James Calzaretta
Bob Calzaretta
Sandi Campbell
Miriam Campbell
Thomas Campone
Jane Candela
Frank Cantazaro
Julie Caporusso
Jane Carponelli
Patricia Carlson
Debbie Carlson Kudla
Vicki Carney
Jeff Carney
Dave & Jacky Cartwright
Leo & Dorie Cascio
Kim Cashmore
Steve Casstevens
Laurel Castaneda
Edlyn Castil
Kathleen Caswell
Tom Cattapan
Carmen Cervantes
Patricia Chamblee
Amy Charlesworth
Maryrose Chiovari
Donna Chmielewski
Barry Christian
Bob Churchill
Patricia Ciston
Jennifer Clarke-Smith
Cindy Clausing
Kathy Cleveland
Paul Cochran

Karlynn Cochrane
Cathy Coleman
Emily Collard
Rosemary Collard
Catherine Colleran
Jennifer Collopy
Pam Condon
Ed Connelly
Joan Cook
Ron Cooke
Solveig Cooney
Marcus Cooper
William Coppedge
Micki Coppel
Denise Coppola
Michael & Julie Costigan
Mary Costigan
Maureen Costigan
Eileen Coyne
Maria Cozzi
Tracey Crawford
Gretchen Crawford
Lynn Crawford
Ronald Crawford
Al Crook
David Cross
Robert Cudney
Jamie Cullen
Tanya Culver
Steve Cummins
Kevin Curry
Brett (BJ) Dammeier
Nancy Dannels
Mary Dano
Anthony & Lynne Danon
Teresa DaPisa
Mary Lou D'Astice
Ginny Datisman
John Dattolo
Ryan Davies
Kelly DeCorrevont
Mary Jane Dee
Michael DeFazio
Jim DeFrancesca
Mary DeLucca
Mary Beth DeMore
Dennis Depcik
Alissa DePue
Steve DeSalvo
William DeVore
Patricia Devron
Louise Dickey
Gail Dieterich
Michael Dimatteo
Tony DiVittorio
Mary Dodgen-Lee
Bob Doherty
Lance Dominique
Bill Donahue
Stephen Donahue
Sean Donohue
Joseph Dorsey
Marc Dote
Sarah Downing
Jacqui Downing
Missy Drake
Susan Dresdow-Schrean

Joshua Driscoll (SC)
Diane Dubinski
Mike DuBois
Sue Duchek
Cyrena Duda
George Duffey
Rita Duffy
Timothy Dummer
Lisa DuShane
Jim Earley
Linda Eberts
Nancy Ebner
Chris Eckert
James Edwards
Shanan Egger
Dianna Ehrenfried
Mallory Eichhorn
Phil Eide
Grant Eisenhower
Bill & Jani Eliasek
Rose Eliasek
Jennifer Ellingsen
David & Mary Ellsworth
Karyn Emeraldal
Susan Entwistle
Debbie Erickson
Gary Erickson
Karen Ericson
Pat Esenberg
Tamra Evans
Amy Evola
Kara Ewers
Gloria Ezan
Bret Fahnstrom
Frances Falcone
Richard Faler
Joe Falkenberg
Matt Farrell
Jack & Melissa Farrell
Cheryl Fasano
Ron Faulkner
Trish Feid
Kevin Fencl
Beverly Fitzgerald
Rita Fletcher
Garrett Flora
Jim Ford
Leslie Forman
Tom Foss
Jeff Fougerousse
David Frakes
Mary Fredericks
Bob Frenzer
Peter Froehlich
Bill Fryer
Anthony Fumarolo
Ruth Furlong
Donald & Sherry Gach
Charles Galena
Peggy Galle
Anna Gamberdino
Carole Garfinkel
Art Gasey
Sharon Gaske
Jason Gatchell
Anthony Gattuso
Adele Gattuso

Arlene Gawlik
Sandy Gbur
Mary Geegan
Daun Geissler
Karen Geraci
Rob Getz
Nuala Gewargis
Robert Giblichman
Peter & Janet Gilbertson
Marla Gillen-Shapiro
Christa Gillespie
Kathleen Gilly
Sally Gimpert
Heather Glaser
Elfriede Glatz
Charles Glomski
Marcie Glueckert-Heidkamp
Nancy Godfryt
Ken Gorvett
Marilyn Graham
Patrice Granity
Shari Greenberg
Robert & Pamela Greenberg
Marianne Greener
Michael & Peggy Grunewald
Jerry & Julie Guenther
Barbara Gugliotta
Tony & Doris Guido
Bill Gunning
Roberta Gutierrez
Susan Gwinnup
Henry Hackney
Jim & Cynthia Hajost
Carolyn Hajost
Linda Hall
Jody Hall
Fred Hall
Arlene Halverson
Karin Hamel
Kathleen Hamill
Dennis Hanson
James Happel
Katie Harris
Chris Hart
Jane Hartfelder
Chrille Harvel
Kelley Hauser
Jim Hayes
Brian & Nanette Heaphy
Judy Hedlund
Nancy Heggem
Bill Heider
Dean Heidloff
Tracey Heine
Hans Heller
Bob Heller
Al & Melody Helms
Kimberly Henry
Kelly Herforth
Zane & Anita Herr
Michelle Hess
Marge Hester
Paul Hester
Brian Hicks, DDS
Trey Higgins
Robert Higgins
Diane Hilgers

Nicola Hill-Cordell
Janice Hincapie
Patty Hintzman
Lori Hirsh
Travis Hodges
Linda Hoeck
Steve Hoerman
Jon Holm
Gary Holub
Betty Hopkins
Gabriel Hopkins
Mary Ann Hospodar
Jim & Judy Houser, Sr.
Jim & Mary Houser, Jr.
Mary Houser
Tom & Ann Marie Houser
Jerry Howard
Tim Howe
Gregg Howell
Robert Hozjan
Tzu-Chung Hsieh
Paula Hubka
Rachel Hubsch
Rosemarie Humphreys
Kathryn Hutchinson
Elizabeth Imbrogno
Kim Inman
Tom Insprucker
Sarah Irwin
Vicki Ivaska
Scott Jacobson
Marc Janovics
Marge Janovics
Joseph Jaskulski
Karen Jasonowicz
John Jawor
Mary Ann Jeske
Patrice Johannes
Rich Johns
Barbara Johnson
Penny Sue Johnson
Dave Johnson
Paula Jones
Ashley Jones
Sharron Jozwiak
Joseph Jozwiak
Mary Jo Jump
Catherine Kaiser
Bellene Kaish
Cindy Kalogeropoulos
Bev Kaman
Joseph Kamper
Ronie Kampf
Gary Kancer
Alisa Kapusinski
Allen & Laurel Katz
Brad Katz
Cary Katznelson
Andy Kazmierczak
Gene Keefe
Kay Kehoe
Kevin Kelly
Cathy Kendrigan
Peggy Kendrigan
Mary Anne Kenesey
James Kenny
Jim Kenny

Pete Kenny
Dorothy Kern
Mike Ketchum
John Kim
Barbara King
Carmelita King
Rebeca Kinzel
Renee Kirshner
Gideon Kishony
Thomas Kivlahan
Patricia Kivlahan
Bob Klett
Tom Klimek
Thomas Kloepfer
Donna Klosowski
Richard & Joanne Kluck
Karen Knafel
James Kniola
Joan Koebernick
Donna Koehler
Kathleen Kohnke
Carol Koleno
Michelle Kondrat
Joan Kopp
Susan Koren
Kathleen Kotrba
Gail Koujaian
Tyler Kovac
Joseph Kowalski
Bari Kozin
Dorothy Krabbe
Lad Kracalik
Marilyn Krieger
Summer Krones
Keith Krutwig
Barbara Kuczma
Alex Kukuy
Robert & Linda Kuniega
Rick Kusunose
Loree LaBahn
John LaDuke
Tony LaFrenere
Jean Lamantia
Celeste Lambert
Linda Lambert
Carl LaMell
Jeanette Landeweer
Sharon Lanera
Brandon LaPlante
Mike LaReau
Darren LaRocque
Mary Larson
Nina Larson
David Laudadio
Kevin Learch
Rick Ledford
Angela Lee
Ron Lencioni
Kris Lent
Kathy Leonard
Sol Lewin
Laurence Lewis
Suzanne Lewis
Elyse Liao
Ann Libit
Cory Lichtenberger
Brian Lichtenberger

Mary Anne Litgen
Brian Little
Lorine Lloyd
Tina Long
Isabel Lopez-Esbenshade
Esther Lordots
Mary Lortie
Aiden Lucas
Rick Luft
Michael Lunardini
Sandra Macarol
Maria Esmeralda Maciel
Thomas Maggio
Kendra Maher
Daniel & Lauren Malartsik
Michael Mallory
Pam Maloney
Linda Mancini
Robin Mandell
Leonard Manewith
Steve Mangano
Lisa Maniola
Lois Marchini
Ken Marchini
Bernadette Marcis
Daniella Marnos
Yash Maroli
Sam Marsillo
Vita Massarelli
Diane Maxwell
Lori Mayer
Jamie McAvoy
Jim McCarthy
Jacqueline McCarty
Kathy McDaniel
Connie McFarland
Colleen McGill-Getz
John McGovern
Kelly McGraw
Vanessa McLean
Steve McVoy
Kim Meehan
Eric Mehrholz
Jennifer Merritt
Judith Merz
Beth Messina
Brian Meyer
Edward & Bernadette Meyer
Curt Meyers
Susana Meza
Thomas Mikrut
Tim Millar
Linda Millard
Robert Miller
Randy Miller
Karen Miller
Melanie Miller-Krupp
Carmeline Mincy-DeVito
Jacob Miskiewicz
LeaAnn Mislevy
Carmen Molinaro
Kathy Molli
Fred Molzahn
Jason Monroe
Charles Monroe
Darrell Moon
Richard Moore

Marcia Moore
Diane Morazoni-Marcus
Don Morrison
Sally Mosko
Eric Mosner
Cheryl Mosqueda
James Moyna
Ron Mueller
Vera Muir
Arlene Mulder
Donna Mundzic
Holly Murawski
Mike Murphy
Joe Musolino
Donna Myers
Kathy Nalepa
Rose Mary Neill
Lisa Nelson
Susan Nelson
Roger & Laura Ness
Alan Newberg
Dianna Newton
Mike Nicolaou
Greta Nielsen
Kristine Niemann
Dave Nordin
Kurt Novak
Kathy Nowicki
Terri Oates
Kevin O'Brien
Jack O'Brien
Jack O'Connor
Ann O'Donnell
Meghan O'Halloran
Brian Olson
Susan Ophus
Jeanette Opitz
Kimberly Orlando
Ginny Ormerod
Carolyn Pace
Kelly Pacini
Robert Paddock
Rex Paisley
Peter Panayiotou
Michael D. Paradise
Michele Paradise
Carol Parke
Cathy Parker
Janaki Parthasarathy
Julie Passmore
Kalpana Patel
Edith Pauls
Christine Payton
Lynne Pearson
Gary Peck
Nick Pecora
Maria Perez
Sharon Perkins
Joe Petricca
Karen Petrunic
Linda Pfitzenreuter
Richard Piegza
Regina Piemonte
Jacqueline Pierce
Michelle Pilafas
Jerry Pinderski
Rachelle Piper

Peter Pisello
Maureen Podolak
Jillian PoGue
Deenie Pomilia
Tim Pope
Thomas Pope
James Powell
Lori Powers
Christy Prikkel
Pauline Pufundt
Jeff Quattrochi
Irma Raddatz
Frank & Carol Ramljak
Freddy Ramos
Kara Randall
Mary Lou Rappaport
Rea Ravn-Hansen
Ann Marie Recchia
Ed Rechner
Christine Reiger
Larry Reiner
Michael & Stacy Reiss
Steven Richter
Brenda Richter
Sandy Ricketts
David Rieger
Ryan Risinger
Heather Ritter
Nilsa Rivera
Jeanne Rivers
Jeanne Roberts
Jim Roberts
Arleen Roberts
Rick Roberts
Michael Rodriguez
Ed Rogers
Kathleen Roy
Eileen Rubin
Yvette Rubin
Larry & Elsje Ruud
Daniel Ruzicka
Mike Rylko
James Rynott
Jonathan Salk
Diane Sanders
Win Sandler
Suzanne Sawka
Anthony Sbalchiero
Sarah Scaravalle
Christine Scaravella
Kristen Scardina
Antonio Scarpelli
Nick Scavo
Tim Schaap
Valentina Schacht
Jay Schaldecker
Cherie Schanz
Ireta Schiferl
Rob Schiferl
Jean Schlinkmann
Jack Schmerer
Bob Schmidt
Mike Schmitt
Lindsay Schneider
Phil Schneider
Lori Schrolucke-Foster
Sara Schubert

Althea Schuler
Maureen Schuler
Kristie Schuller
Brent Schultz
Robert (Dutch) Schultz
Logan Schultz
Richard Schumacher
Jim Schwantz
Elizabeth Schwarz
Debra Schwellenbach
Glenn Scoggins
Doug Scott
Steven Seekins
Ralph Seidl
Rob Seitz
Brian Selders
Debbie Selders
Julie Selof
Steve Sharer
Tracy Sharkey
Mary Jo Shepherd
Lisa Sheppard
John Short
Justin Sienkiewicz
Paul Siwinski
Joanne Skony
Ron Skwarek
Susan Slapke
Nina Slodki
James Slusher
Irene Smetana
Tina Smith
Eric Smith
JoAnn Snyder
Dennis Snyder
Henry Sobotka
Roman Soldan
Cynthia Solovy
Katherine Sowa
Paul & Nanette Sowa
Bill Spieth
Cathy Splett
Jane St. Pierre-Murguia
Lyle Staab
Rod Stackhouse
Jerome Stanislawski
Myria Stanley
Michael Starr
Robert Steder
Susan Stein
Fred Stein
Bill Steininger
Jean Sterbenc
Susan Stevens
Mary Stitt
Dan Stockwell
Michelle Stuercke
Kelly Switt
Glenn Szurgot
Heidi Tabib
Jason Talanian
Mark Tauber
Scott Taylor
Brian Taylor
Chris Teichert
John & Joanne Terrelli
Bev Terry

Phil Thiem
Roland Thilmany
Barbara Thomases
Barbara Thompson
Jim Thomson
Marion Timmins
Vicki Tisinai
Steve Tokic
Mark & Sharlene Toljanic
Sue Tomaska
Terry Toth
Scott Traficanti
Dave Trayser
Cathleen Tully
Jennifer Ubert
Arnie Uhlig
Jim Ulm
Gerald Utt
Martin Valdez
Roger Van Wazen
James Vanaria
Michael Vanaria
Dave VanRyn
Richard Veile
Lee Volpe
Bob Wagner
Theresa Waite
Debbie Walega
Jim Wales
Emma Walker
Michael Ward
Ronald Washington
Eric Wasowicz
Geoff Watkins
Robert Wayne
Kevin Weasler
Katherine Weber
Patricia Weidner
David Weiner
Jonathan Weinschenk
Martha Weiss
Stephanie Wermes
Sara White
Bob Whitehead
Duane Whitson
Irene Whittington
Thomas Wilkes
Brooke Wils
Donna Wilson
Douglas Wingeard
Janna Witt
Jeanette Wohlford
Kevin Wojnicki
Torstiner Woodbury
Doug Young
Raul Zaldivar
Lynn Zeitler
Joe Zeman
Ann Marie Zgoda
Mike Zgoda
Mike Zierk
Dave Ziltz
Geraldine Zimmerman
Shelley Zuniga
Christopher Zweidinger
Kathy Zweidinger

INDIVIDUAL PRIZE SPONSORS

Lori Anderson
Christina Anderson Heller
Katrina Arthur
Dianne Ashe
Beth Anne Ausnehmer
Steve Balinski
Audrey Berg
Marcin Bos
Dane Bragg
Joseph Burlini
Traudy Burmeister
Sandy Calzaretta
Cristen Carlson
Mary Cay Chisholm
Emily Collard
Tom Conway
Joan Cook
Al Crook
Joanne Dailey
Kathleen Demma
Dennis Depcik
Tony Diamond
Louise Dickey
Sharon DiMaria
Bill Donahue
Marc Dote
Dianna Ehrenfried
Susan Entwistle
Jayne Finger
Bob Flaherty
Pat Flaherty
Gar Forman
Leslie Forman
Roylene Gallas
Karen Geraci
Sue Gould
Carolyn Hajost
Hajost Family
Linda Hall
Paul Hester
Jim Houser, Jr.
Marge Janovics
Patrice Johannes
Adriane Johnson
Barbara Johnson
Paula Jones
Kaman Family
Laurel Katz
Cyndy Kay
Mary Anne Kenesey
Rich Klein
Tom Kloepfer
Joanne Kluck
Richard Kluck
Sigrud Koskubar
Summer Krones
Jean Lamantia
Sharon Lanera
Mary Larson
Teresa Lee
Diane Lippold
Winnie Lynn
Barbara Mazursky
Glenn Meier

Carmen Molinaro
Deborah Nelson
Sandy Nichols
Kristine Niemann
Anne Constance Nixon
Terri Oates
Jack O'Brien
Jing O'Brien
Sean O'Brien
Joy O'Connell
Kimberly Orlando
Julie Passmore
Sally Perfect-Wallman
Fran Pingel
Jim Piotrowski
Deenie Pomilia
Sandy Ricketts
Ryan Risinger
Brett Robinson
Sylvia Roe
Mike Rylko
Jonathan Salk
Carey Savitt
Tim Schaap
Cherie Schanz
Ann Scheuer
Dan Schimmel
Beth Schwarz
Brian Shepard
Lisa Siwek
Debbie Smith
Dennis Snyder
Cynthia Solovy
Andrew Spetter
Cathy Splett
Susan Stevens
Michelle Stuercke
Ryan Tavenner
Terrelli Family
Mike Terry
Bev Terry
Kerry Tholl
Jim Thomson
Marie Tumino
Laurie Wagner
Theresa Waite
Martha Weiss
Craig Yamamoto
Larry Zgoda

CORPORATE PRIZE SPONSORS

Ace Hardware
Addison Park District
Adelle's Fine American Fare
Agio Italian Bistro
Ala Carte Entertainment
AlaMode Collections
ALSCO, Inc.
American Girl Doll Company
Americor Electronics, Ltd.
Anvil Club
Arlington Heights Ford
Arlington Heights Park District
Arlington Lakes Golf Club
Arlington Park Racecourse, LLC

Armand's Restaurant
Bahama Breeze
Bartlett Park District
Bentley's Pet Stuff
Berkshire Hathaway Home Services
Better Body Health & Fitness
Biaggi's Ristorante Italiano
Billy's Pancake House
Binny's Beverage Depot
Black Finn - American Grille
Bob Chinn's Crab House
Bolingbrook Golf Club
Bottle & Bottega
Brian Properties
Briana's Restaurant
Bridges of Poplar Creek Country Club
Brighton Collectibles
Buffalo Grove Golf Center
Buffalo Grove Park District
Buffalo Wild Wings
Bulldog Ale House
Cafe Fourteen
Cailifornia Pizza Kitchen
Campus Colors
Capelli Salon
Cary Country Club
Cheesecake Factory
Chicago Bagel & Bialy II
Chicago Bears
Chicago Blackhawks
Chicago Children's Theatre
Chicago Cubs
Chicago Fire
Chicago Prime Steakhouse
Chicago Sky
Chicago White Sox
Chicago Wolves
Chicago Zoological Society/Brookfield Zoo
Chick-fil-A
Chili'S Grill And Bar
Coachman's Golf Resort
Comedy Sportz Chicago
Connect to Community
Constellation Brands
Consumer Electronics Distributors
Conway Dressings
Cooper's Hawk
Corner Bakery
Corporate Concepts
Cortland's Garage
Costco
Countyline Tavern
Culver's
Dazzles, Inc.
Deerfield Golf Club
Destination Fitness
Disney World
Dorfler's Meat Market
Draft Picks Sports Bar
d'Vine Wine and Gifts
Echelon Design
Eddie's Restaurant & Lounge
Edward Jones Company
Egg Harbor Cafe
Eggsperience Cafe
Elements Therapeutic Massage
Elgin Parks & Recreation Department

Eli's Cheesecake Company
Elk Grove Park District
European Jewelry
Fitness 19
Flaherty Jewelers
Forbici Salon and Spa
Forsight Vision
Fox and Hound
Fox Run Golf Course
Francesca's Tavola
Frank Cooney Co., Inc.
Fresh Market
Garfield's Beverage Warehouse
Geneva National Golf Club
Gianni's Cafe
Granite City Brewery
Hair Horizons of Schaumburg
Hampton Inn & Suites
Hampton Inn & Suites - Chicago
Hampton Inn & Suites - Schaumburg
Hampton Majestic
Hanover Park Park District-Seafari Springs
Harrington Manor
HARTING Inc.
Heng Wing Restaurant
Highland Woods Golf Course
Hilldale Golf Club
Hilton Chicago Northbrook
Hoffman Estates Park District
Holiday Inn
Hyatt Regency Woodfield
Illinois Railway Museum
Improv
Indian Trails Library
Jade Financial & Tax Services
Jagermeister
Jameson's Charhouse
Jarosch Bakery
Jelly Belly Factory
Jersey Mike's Subs
Jewel Food Stores
Jimmy John's
Joe's Crab Shack
Joffrey Ballet
Johnny's Kitchen & Tap
Kildeer Police Department
Kloepfer Insurance Services, Inc.
Kohl's Children's Museum
Kolbi Pipe Marker Co.
Kramer Photographers
La Tasca
Laser Quest
Laugh Out Loud
LensCrafters at Macy's
Lexus of Arlington
Long Grove Confectionary
Lou Malnati's Pizzeria
LulaRoe
Lynfred Winery
Maggiano's Little Italy
Makray Memorial Golf Club
Mane Street
Mariano's
Massage Envy
MB Financial
McCormick & Schmick's Seafood & Steaks
Medieval Times Dinner & Tournament

Menchie's
Metropolis Performing Arts Center
Miller/Coors Brewing
Millie's Halmark
Monson Jewelers
Mount Prospect Golf Club
Mount Prospect Park District
Nakfoor Orthodontics
Nicholl Knoll Golf Club
Nino's Pizza
Noodles & Company
Northlight Theatre
Northwest Community Healthcare
Northwest Metalcraft Studio, Inc.
Northwest Speech and
Hearing Center, Ltd.
Northwestern Athletics
Nothing Bundt Cake
Old Orchard Country Club
Oliva Group, LLC
Olive Garden
On The Border
Onion Pub and Brewery
Outback Steakhouse
Palatine Hills Golf Course
Palatine Inn Restaurant
Palatine Park District
Palatine Park District Commissioners
Palatine Wellness Group
Palm Court Restaurant
Panera Bread
Paper Source
Pastabilities
Peggy Kinnane's Restaurant & Pub
Persin & Robbin Jewelers
PGA Tour Superstore
Pinnacle Sales and Marketing
Pinstripes
Plum Grove Dental Assoc., Ltd.
PotBelly
Prospect Heights Park District
Raging Waves Water Park
Ram Restaurant & Brewery
Randall Oaks Golf Club
Ravinia
RE/MAX
Red Classic Transportation
Retro Bistro
River Trails Park District
Robert Cambell fine portraiture
Rob Roy Golf Course
Rocco Vino's
Rockford IceHogs
Rolland's Jewelers
Rolling Meadows Park District
Rose Garden Cafe
Rotary Club of Arlington Heights
Ruth's Chris Steak House
Salon Coccole
Salt Creek Golf Club
Salt Creek Rural Park District
Sam & Harry's
Schaumburg Boomers
Schaumburg Golf Club
Schaumburg Park District
Schaumburg Prairie Center for the Arts
Seasons 52

Shakou
Shaw's Crab House
Shedd Aquarium
Shelter, Inc.
Shirley Nails
SLC Pet Sitters
Snap-on Tools
Sodexo Catering
South Barrington Club
Starbucks
Suburban Associates in Ophthalmology
Subway Restaurants
Sweet T's Bakery & Cake
Tapalpa Mexican Restaurant
Target
The Arboretum Club
The Dinner Detective
The Foundation of the
Rotary Club of Buffalo Grove
The Olive Tap
The Onion Pub & Brewery
The Rose Garden Café
The Saddle Room
Thomson Insurance Agency Inc.
Timothy Grant Jewelry, Ltd.
Titleist Golf
Tito's Vodka
TopGolf
Town Square Publications
Trader Joe's
Traditions at Chevy Chase
Twin Lakes Golf Club
Twin Peaks
United States Brass & Copper
UPS
Uptown Cafe
Van Fossen Chiropractic
Vera Bradley Store
Villa Olivia Golf Course
Village Dental
VisualEdge Creative Services
VTech Electronics North America
Wa-Pa-Ghetti's Pizza
Way To Go Limousine
Wheeling Park District
West Meadows Ice Arena
Wildberry Pancakes & Cafe
Wildfish
Windy City Bulls
XPO Logistics
Yankee Candle Company
Zanies Comedy Nite Club
Zurich - North America

VOLUNTEERS

Gina Abbate
Ted Adatto
Manny Aguilar
Barb Balas
Steve Balinski
Joan Barkocy
Gregory Barr
Steven Basham
Chuck Baum
Marjorie Benbow
Diane Bertolani

Lois Bierman
 Timothy Bingham
 Ernie Blomquist
 Dane Bragg
 Jane Breitlow
 Carl Breitlow
 Trisha Breitlow
 Catherine Brodnan
 Danny Burmeister
 Jim Burmeister
 Sandi Campbell
 Emily Collard
 Catherine Colleran
 Shawn Collins
 Ashley Curtis
 Mary Lou D'Astice
 Brian Dennison
 Nicole Estrada
 Tina Famularo
 Cheryl Fasano
 Jayne Finger
 Leslie Forman
 Carol Gabrielsen
 Meredith Gieseler
 Tori Gonzalez
 Shelley Graser
 Andrea Griffin
 Brian Hacias
 Katie Hacias
 Jeff Haiman
 Tara Havlicek
 Nancy Heggem
 Christinia Hirsch
 Jim Houser
 Rachel Hubsch
 Brant Hughes
 Marc Janovics
 Todd Janovics
 Charles Jessup II
 Adriane Johnson
 Courtney Kaminsky
 Maureen Kerrigan
 Rich Klein
 Joanne Kluck
 Arlene Kozemzak
 Summer Krones
 Margaret Kuzara
 Chris Langs
 Daniel Llarente
 Dennis Lenski
 Cortney Lucente
 Francisco Maciel
 Michele Mahoney
 Jeffrey Malek
 Yash Maroli
 Christine Maxwell
 Joe Maxwell
 Sean McDonnell
 Marge McNamara
 Aaron Meeks
 Brian Meyer
 John Mihic
 Linda Millard
 Melanie Miller
 Carmen Molinaro
 Jacki Moore
 Erin Nedland
 Michael Nepaul

Judi Nosal
 Kathy Nowicki
 Joe O'Brien
 Shannon O'Connor
 Matt Paladino
 Michele Paradise
 Carol Parke
 Julie Passmore
 Dave Patricca
 Katrina Place
 Janet Plencner
 Larry Plencner
 Deenie Pomilia
 Deb Prendergast
 Arleen Roberts
 Jordan Ross
 Mike Rylko
 Joe Salazar
 Dan Schimmel
 Jill Schmidt
 Jodi Schultz
 Rob Seitz
 Lisa Siwak
 JoAnn Snyder
 Zofia Sobkiewicz
 Jeff Socher
 Kay Solomon-Okoli
 Roger Sosa
 Cathy Sporleder
 Marc Spunt
 Dawn Stangle
 Erica Stanko
 Liz Thomas
 Steven Tokic
 Jessica Vasalos
 Theresa Waite
 Keith Williams
 Brooke Wils
 Yazmin Yopez
 Dave Ziltz

CADDIES

Jack Arends
 Chris Carnel
 Ryan Cortez
 Brett Haskell
 Jim Houser
 Tom Houser
 Paul Jochim
 Mike Marshall
 Dave McCune
 Steve Nagle
 John Robinson
 Ryan Shera
 Jeffrey Simon
 Jake Sklena
 Bill Steininger
 Keith Wallace

MEMORIALS

Millie Argast
 Patrick M. Bisek
 Jason Alan Eliasek
 Wilbur (Bud) Eliasek
 Kevin T. Kendrigan

Randall Kopp
 Sean Kremer
 Christine Motyka
 Sandy Nichols
 Reva B. Rennie
 Allison Wayne

HONORARIUMS

Tom Busby
 Tom Campoone
 Bijal Chikani
 Sharon Devo
 The Eliasek Family
 Alexander Gasey
 Anthony & Jennifer Gattuso
 Greg Greenburg
 Laura Hill
 Allyson Houser
 Emily Meyer
 Jack Splett
 Ramon Torres
 Becky Tranchita

"Thank you so much for the scholarship money for camp for Colby and especially for considering him for the Weekly Recreators. It really means a lot to me that you did that. It's been tough without Colby's dad and being unemployed for 2 years. So any and all support to help with stuff for him is greatly appreciated."
 - Kimberli, Mother of a scholarship recipient

"Just wanted to let you know that I think, as many parents do, you and your staff are doing a great job. If not for all you, our athletes wouldn't be who they are today."
 - Fran Falcone





NORTHWEST SPECIAL RECREATION ASSOCIATION
 3000 W. Central Rd., Suite 205 • Rolling Meadows, IL 60008
 847/392-2848 • 392-2855 TTY • 392-2870 FAX • www.nwsra.org

DO YOU BENEFIT FROM RECEIVING THIS BROCHURE?
IF NOT, PLEASE CALL US AT 847/392-2848
TO HAVE YOUR NAME REMOVED FROM OUR MAILING LIST.

NON-PROFIT ORG.
 US POSTAGE
PAID
 Permit #2565
 Palatine P&DC
 Illinois 60095



DATE	EVENT
Wed, May 16	Buffalo Grove Golf Classic
Thu, June 7	Palatine Hills Golf Classic
Wed, Aug. 15	Moretti's/NWSRA Golf Classic In Memory of Kevin T. Kendrigan
Thu, Aug. 30	Women's Golf Outing
Thu, Sept. 13	Arlington Classic Golf Outing
TBD	Terrazo & Marble Supply Companies Golf Outing
Fri, Nov. 2	Celebrate Ability Gala

Connect with us

